

Reservoirs and Wet Line Components



10 Gallon - Frame Mounted Steel Reservoir

Features

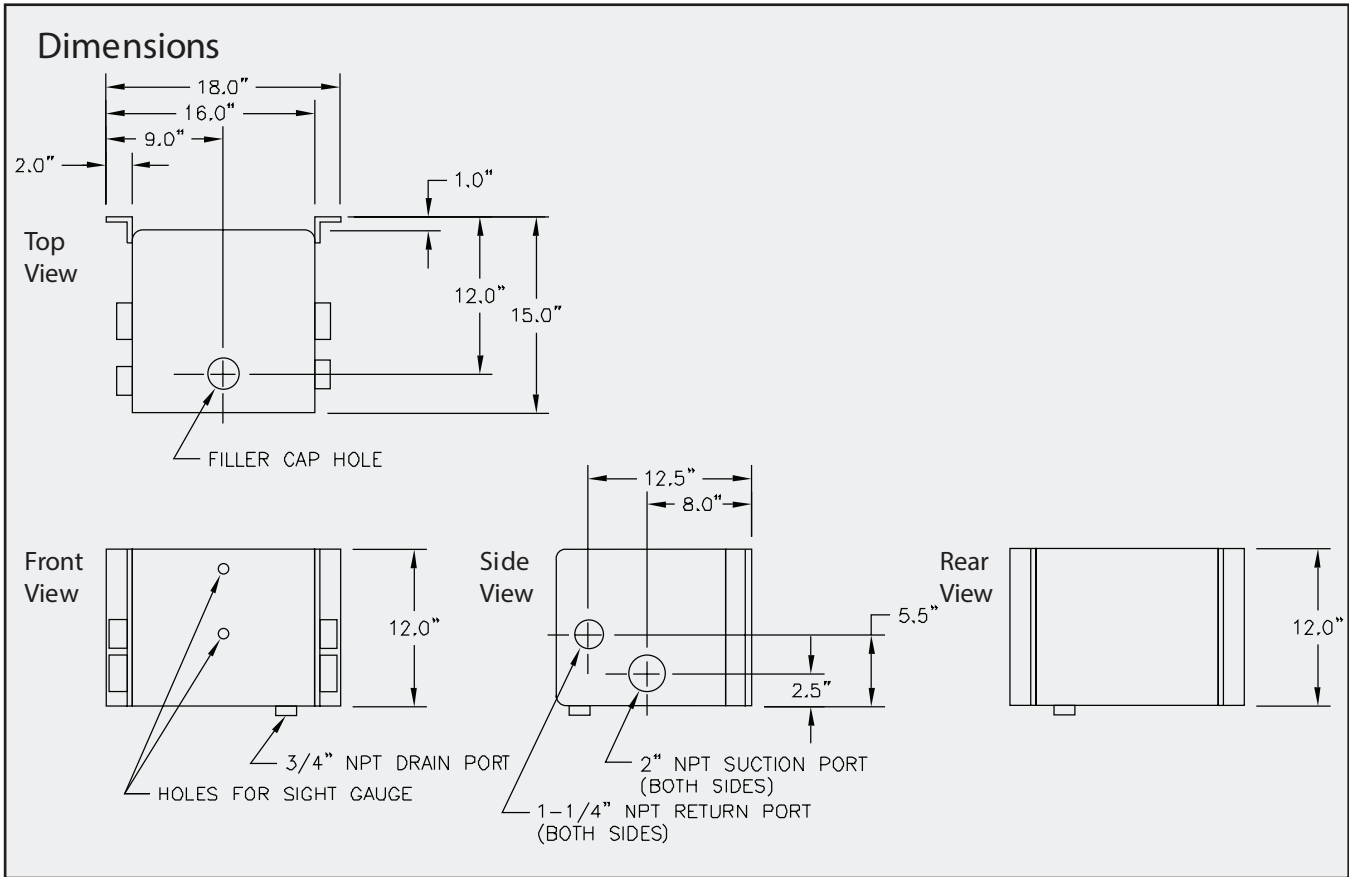
- Reservoirs are made of 12 gauge pickled steel
- Exterior is powder coated
- Heavy $\frac{3}{16}$ " angled iron brackets for vehicle frame mounting

Part Number	Style
RES-10	Reservoir only
RES-10B	Reservoir with accessories



Accessories Include

- | | |
|--------------|-----------------------------------------------------|
| 57XL-40N | Filler breather |
| F-LLG-5 | Sight/level temperature gauge |
| MP-75 | Magnetic drain plug |
| TFS-1220-0-3 | Steel bushing suction strainer, 1 1/4" NPT (female) |



RESERVOIRS AND ACCESSORIES

20 Gallon - Frame Mounted Steel Reservoir

Features

- Reservoirs are made of 12 gauge pickled steel
- Exterior is powder coated
- Heavy $\frac{3}{16}$ " angled iron brackets for vehicle framing mounting
- Internal return flow deflection plate
- Available with access hole for reservoir mounted return filter
- Access hole cover plate also available

Part Number	Style
RES-20	Reservoir only
RES-20-A	Reservoir with access hole for return filter or clean out cover
RES-20-A-B	RES-20A with accessories



Reservoir shown with accessories

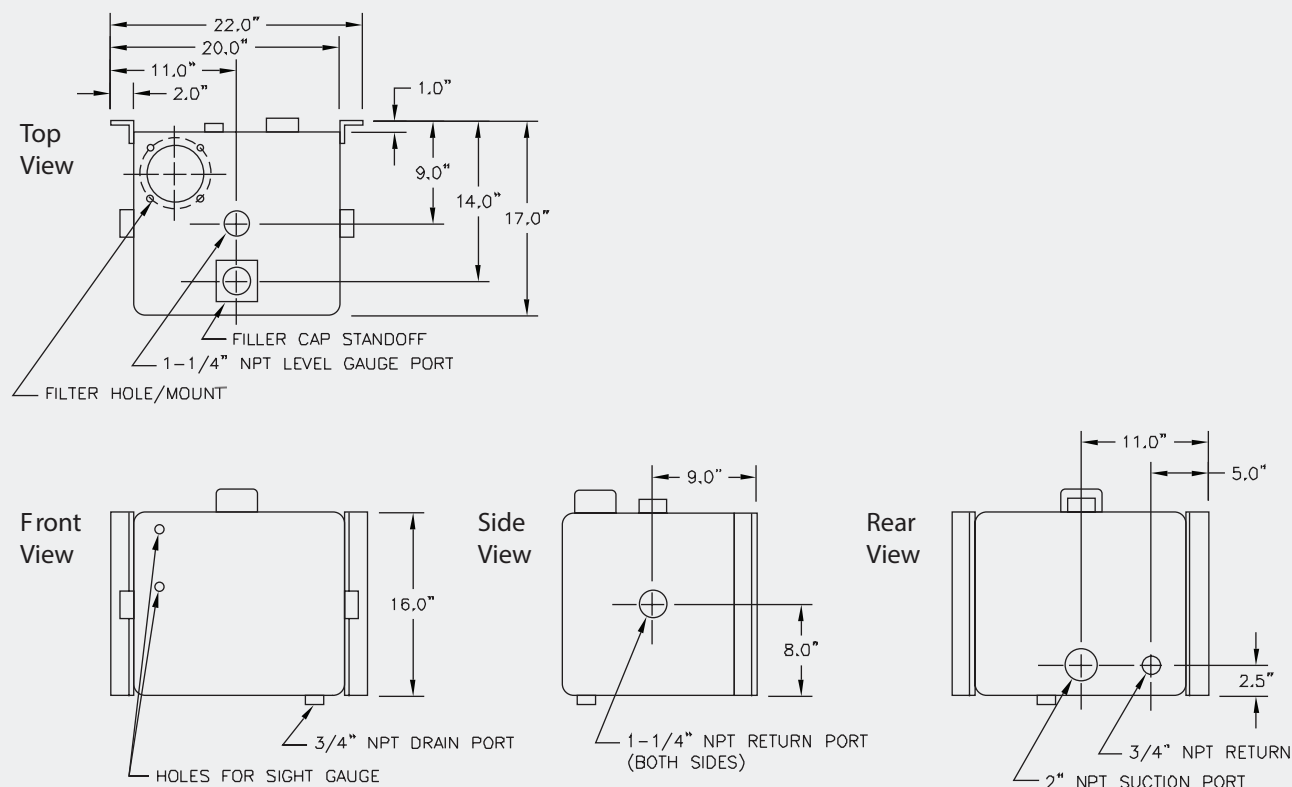
Accessories Include

57XL-40N	Filler breather
F-LLG-5	Sight/level temperature gauge
MP-75	Magnetic drain plug
TFS-1220-0-3*	Steel bushing suction strainer, 1 1/4" NPT (female)

*For load sensing systems, use TFS-2020-0-0 (2" NPT, male)

Note: Return Filters Available on page 9

Dimensions



30 Gallon - Frame Mounted Steel Reservoir

Features

- Reservoirs are made of 12 gauge pickled steel
- Exterior is powder coated
- Heavy $\frac{3}{16}$ " angled iron brackets for vehicle frame mounting
- Internally baffled with return flow deflection plate to prevent suction aeration
- Available with access hole for reservoir mounted return filter
- Access hole cover plate also available

Part Number	Style
RES-30	Reservoir only
RES-30-A	Reservoir with access hole for return filter or clean-out cover
RES-30B	Reservoir with accessories
RES-30-A-B	RES-30-A with accessories



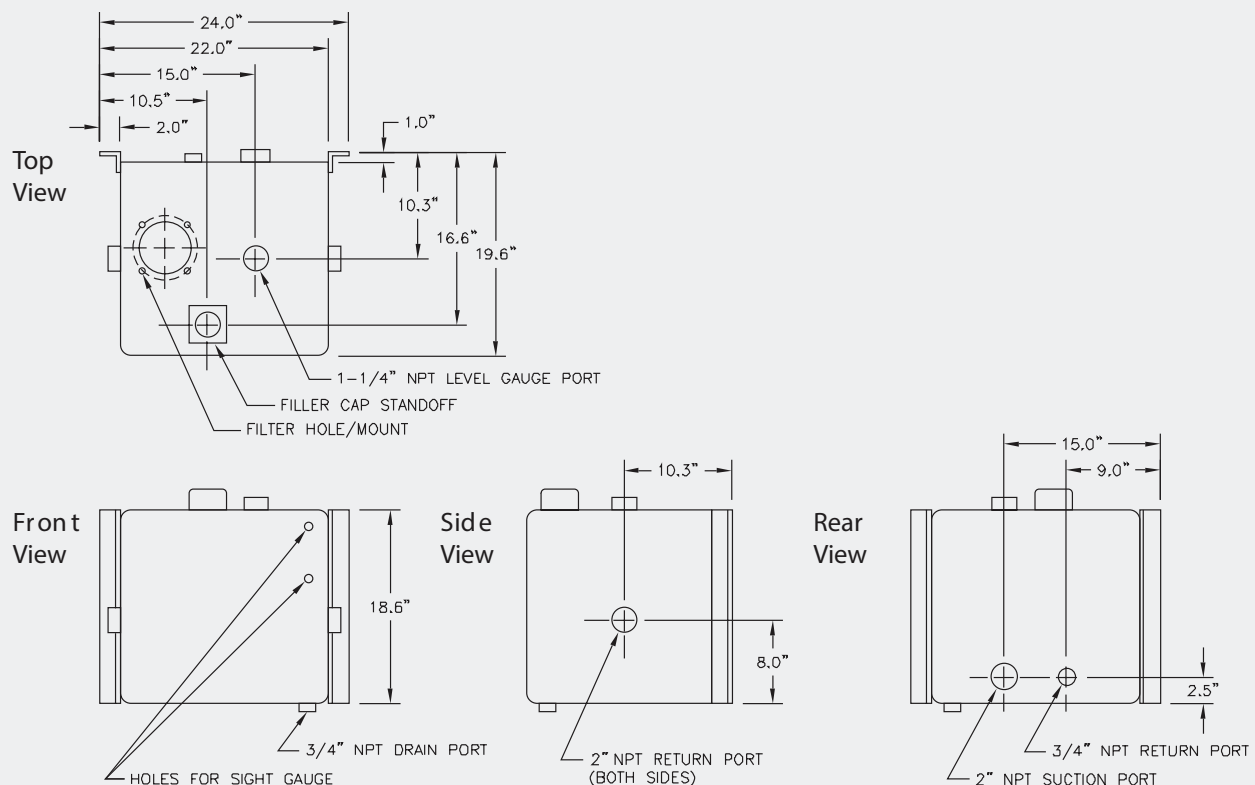
Reservoir shown with accessories

Accessories Include

- 57XL-40N Filler breather
 F-LLG-5 Sight/level temperature gauge
 MP-75 Magnetic drain plug
 TFS-12200-3" Steel bushing suction strainer, 1 $\frac{1}{4}$ " NPT (female)
 *For load sensing systems, use TFS-2020-0-3 (2" NPT, male)

Note: Return Filters Available on page 9

Dimensions



RESERVOIRS AND ACCESSORIES

30 Gallon - Vertical Frame Mounted Steel Reservoir

Features

- Reservoirs are made of 10 gauge pickled steel
- Exterior is powder coated
- Heavy 1/4" steel brackets for vehicle framing mounting
- Available with access hole for reservoir mounted return filter
- Access hole cover plate also available

Part Number	Style
RES-30-SLIM	Reservoir only
RES-30-SLIM-A	Reservoir with access hole for return filter or clean-out cover
RES-30-SLIM-A-B	Reservoir with accessories
RES-30-SLIMB	RES-30-A with accessories



Reservoir shown with accessories

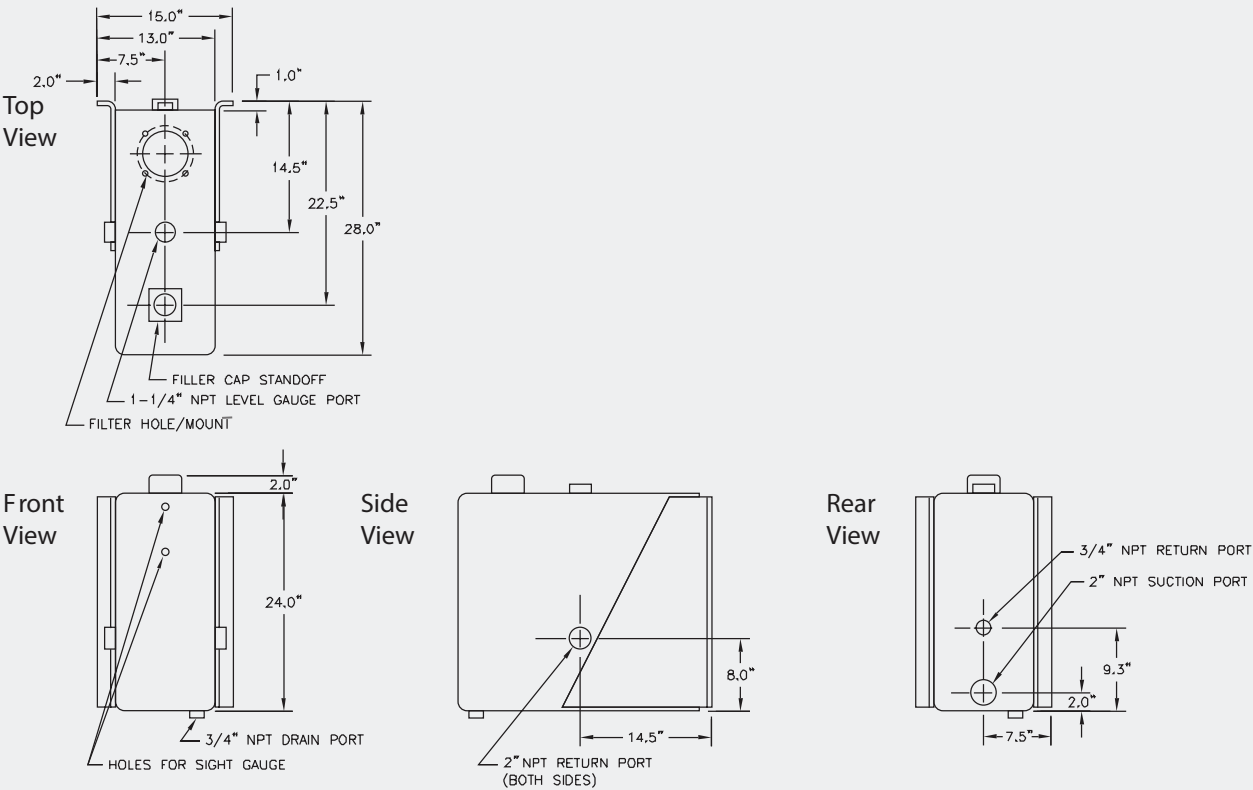
Accessories Include

- 57XL-40N Filler breather
F-LLG-5 Sight/level temperature gauge
MP-75 Magnetic drain plug
TFS-1220-0-3* Steel brushing suction strainer, 1 1/4" NPT (female)

*For load sensing systems, use TFS-2020-0-0 (2" NPT, male)

Note: Return Filters Available on page 9

Dimensions



30 Gallon - Behind-the-Cab Vertical Steel Reservoir

Features

- Reservoirs are made of 10 gauge pickled steel
- Exterior is powder coated
- Angled $\frac{3}{8}$ " steel brackets for vehicle framing mounting
- Internally baffled to prevent suction aeration

Part Number	Style
RES-30-U	Tank only
RES-30-U-AB	RES-30-U-AB
RES-30-U-SS	Tank only - stainless seal
RES-30-U-AB-LS	RES-30-U-AB load sense
RES-30-U-AB-LS-SS	RES-U-AB-LS - stainless steal

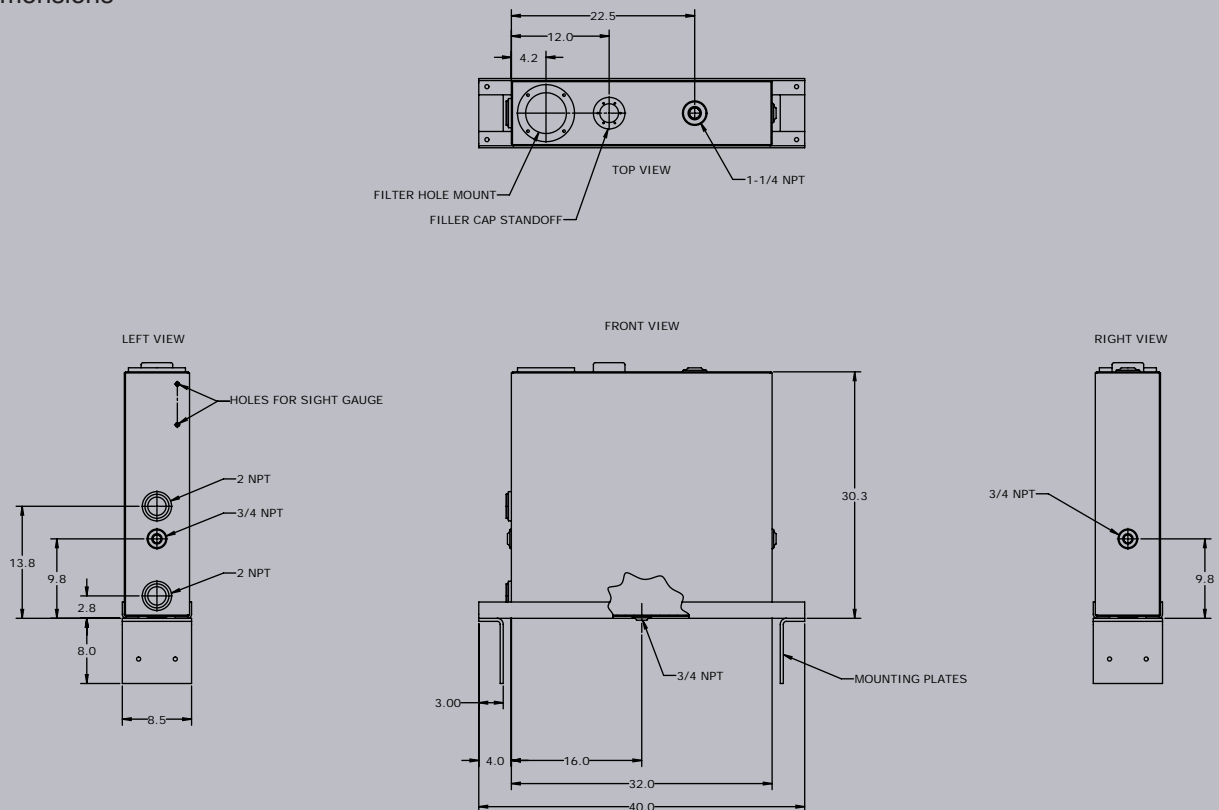


Reservoir shown with mounting kit and accessories

Accessories Include

57XL-40N	Filler breather
F-LLG-5	Sight/level temperature gauge
MP-75	Magnetic drain plug
K-RES-M01	Mounting kit
TD-1220-PME	Tank diffuser, 2" NPT male x 1 $\frac{1}{4}$ " NPT female

Dimensions



RESERVOIRS AND ACCESSORIES

40 Gallon - Frame Mounted Steel Reservoir

Features

- Reservoirs are made of 10 gauge pickled steel
- Exterior is powder coated
- Heavy $\frac{3}{16}$ " angled iron brackets for vehicle frame mounting
- Internally baffled with return flow deflection plate to prevent suction aeration
- Available with access hole for reservoir mounted return filter
- Access hole cover plate also available

Part Number	Style
RES-40	Reservoir only
RES-40-A	Reservoir with access hole for return filter or clean-out cover
RES-40-B	Reservoir with accessories
RES-40-A-B	RES-40-A with accessories

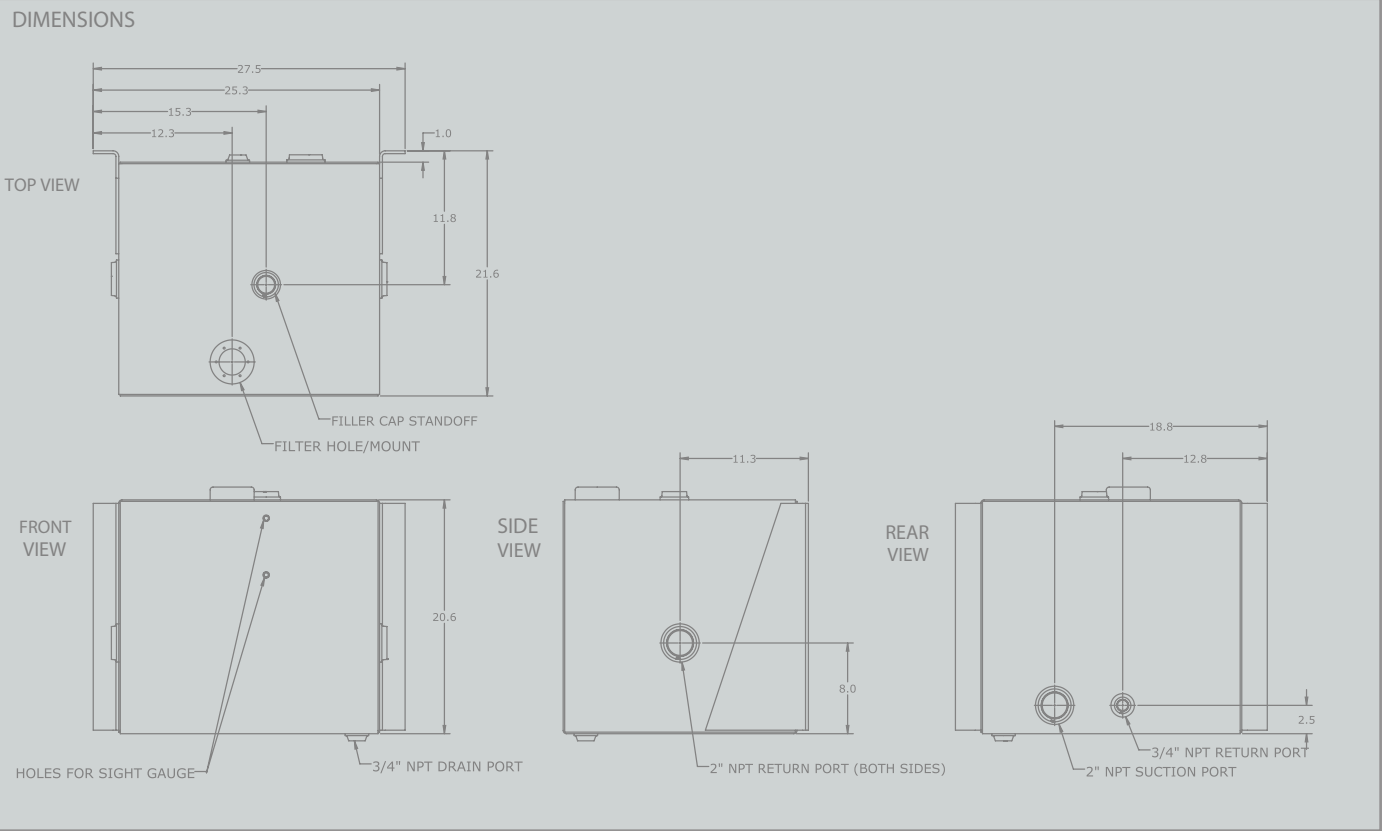


Reservoir shown with accessories

Accessories Include

- 57XL-40N Filler breather
 - F-LLG-5 Sight/level temperature gauge
 - MP-75 Magnetic drain plug
 - TFS-1220-0-3* Steel bushing suction strainer, 1 1/4" NPT (female)
- *For load sensing systems, use TFS-2020-0-3 (2" NPT, male)

Note: Return Filters Available on page 9



50 Gallon - Behind-the-Cab Vertical Steel Reservoir

Features

- Reservoirs are made of 10 gauge pickled steel
- Exterior is powder coated
- Angled iron brackets for vehicle framing mounting
- Internally baffled to prevent suction aeration
- Reservoir mounting kit
- Bottom ports

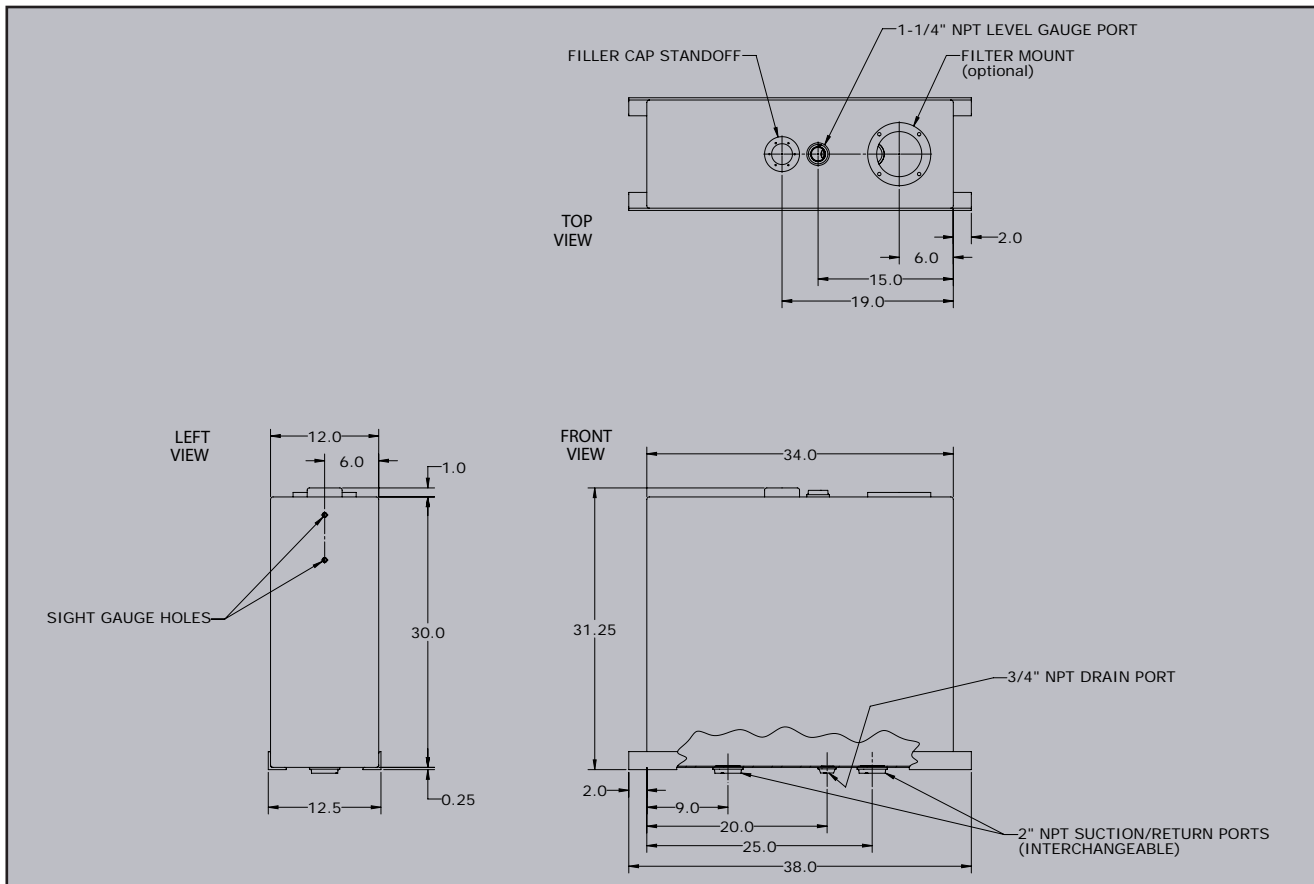
Part Number	Style
RES-50-U	Steel reservoir only
RES-50-UA	Upright aluminum 50 gallon
RES-50-UB	Res-50-U with accessories
RES-50-RA	Saddle mount aluminum 50 gallon



Accessories Include

57XL-40N	Filler breather
F-LLG-5	Sight/level temperature gauge
MP-75	Magnetic drain plug
K-RE S-M01	Mounting kit
TD-1220-PME	Tank diffuser, 2" NPT male x 1 1/4" NPT female

Reservoir shown with mounting kit and accessories



RESERVOIRS AND ACCESSORIES

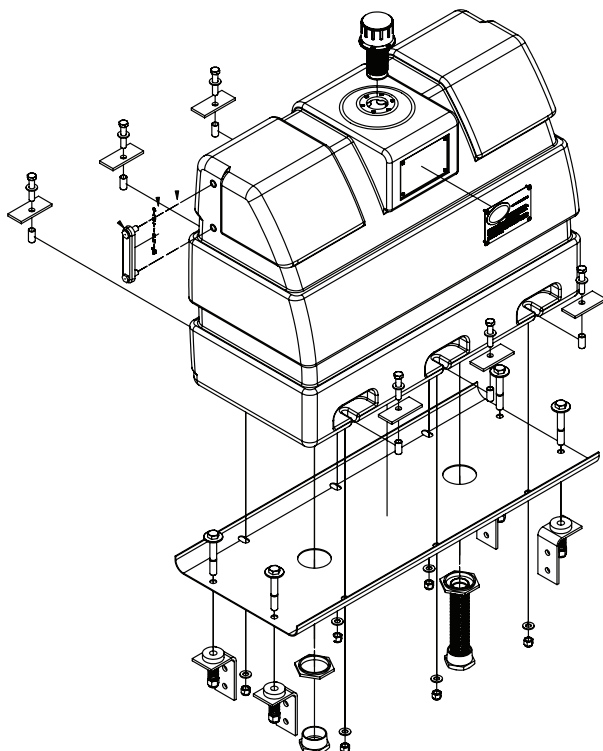
50 Gallon - Behind-the-Cab Polyethylene Vertical Reservoir

Features

- Reservoirs are made of polyethylene
- Mounting base with strap assembly
- Screw-in diffuser
- One (1) reducer bushing 2" to 1 1/4" NPT
- 40 micron filler breather cap
- Two (2) screw-in 2" NPT bottom ports
- Four (4) pre-drilled chassis mounting angles
- Four (4) rubber mounting pads
- Four (4) 2" plated compression springs
- Four (4) cap screws, lock nuts and flat washers



Part Number	Style
RES-50UP	Reservoir package

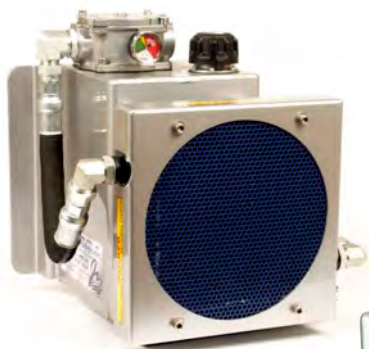


Hydra-Kool

Hydra-Kool is an all aluminum lightweight compact cooler filtration and reservoir system. The ideal solution for mobile hydraulic applications where weight reduction is vital to reducing fuel consumption costs.

The Hydra-Kool includes the following items:

- Oil cooler with hydraulic or electric driven fan
- High flow integral 10 micron filter
- 4 or 8 gallon reservoir capacity
- Sight temperature gauge
- (2) 1 1/4" suction strainers with by-pass
- 10 micron filler breather
- Filter element condition indicator
- 1" I.D. line size
- Half the dry weight of any other brand

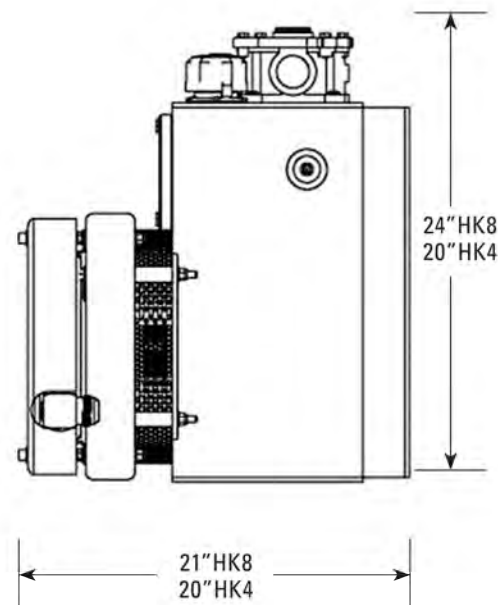
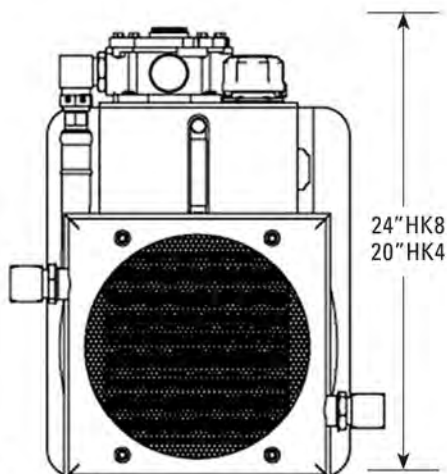
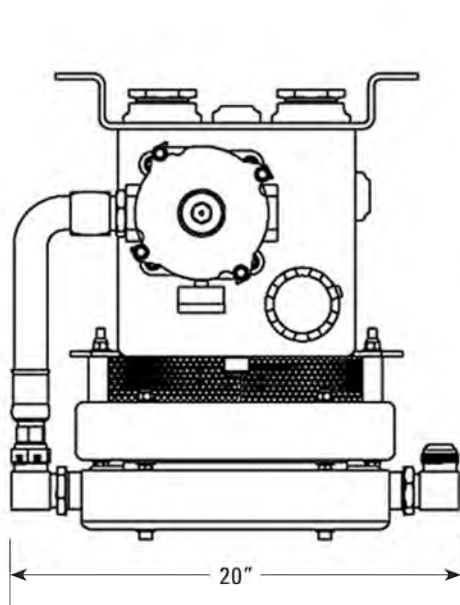


HK4-20, 4 gallon reservoir



HK8-40, 8 gallon reservoir

Part Number	Style
HK4-20-HYDRA-KOOL	4 gallon reservoir
HK8-40-HYDRA-KOOL	8 gallon reservoir



RESERVOIRS AND ACCESSORIES

Ultra-Kool

The Ultra-Kool is a compact hydraulic reservoir, filter and cooler system. The stainless steel construction, Enduraguard filter housing and filler breather, and frame isolation mounts make this perfect for severe applications.

High Flow Capacity

- 50 GPM rated cooler and filter circuit
- SAW-20 return ports for low pressure drop

Multiple Mounting Options

- System includes quick mount brackets, no drilling required
- Option to mount directly to truck frame

Space Saving Design

- Behind the cab mounting requires less than 12" space

Multiple Fan Switching Options

- Power harness and relay come standard
- Optional harness for air or electric shift to PTOs
- Temperature switch option for fan activation at 120 degrees F° oil temperature
- Override switch option for additional fan control



Part Number	Style
UK8-50-12VDC-SS	Base model, 8 gallon reservoir, 50 GPM flow capacity, 12V DC fan
UK8-50-12VDC-SS-ASW	Base model with air switch option
UK8-50-12VDC-SS-ASW-O	Base model with air switch option and override
UK8-50-12VDC-SS-GSW	Base model with ground switch option
UK8-50-12VDC-SS-GSW-O	Base model with ground switch option and override
UK8-50-12VDC-SS-TSW	Base model with temperature switch option
UK8-50-12VDC-SS-TSW-O	Base model with temperature switch option and override

Filler Breathers

Part Number	Description
57XL-40N	40 Micron, 3" steel mesh basket, gasket included
FB-10-40-000-0	10 micron, 4" metal perforated basket, gasket included

Sight Level Temperature Gauge

Part Number	Description
F-LLG-5	5", M12 metric threads, black steel guard, 0-220 F° temperature range
FASG-05M-T-PG	5", M12 metric threads, black plastic guard, 0-212 F° temperature range
SG-05M-T-O	5", M12 metric threads, no guard, 0-212 F° temperature range
SG-5-9P	Black aluminum guard for SG-05M-T-O
SLGC-5T	5", 1/2-13 standard threads, cast guard, 0-195 F° temperature range
HSG-55-H	5", 1/2-13 standard threads, chrome plated steel guard, 0-176 F° temperature range
CS3615-200428	5", M12 metric threads, black aluminum guard, 1-220 F° temperature range



F-LLG-5

Magnetic Drain Plug

Part Number	Description
MP-75	3/4" NPT

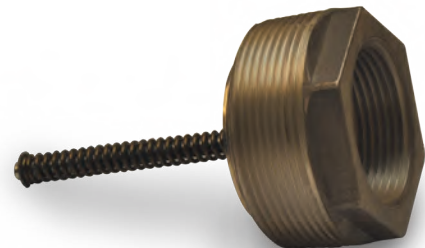


MP-75

Return Line Check Valve

- Prevents oil from draining out of reservoir when changing a filter element
- Eliminates the need for a separate ball valve

Part Number	Description
BRV-1220-2-03	2" x 1 1/4" NPT check valve
BRV-0712-2-03	1" x 3/4" NPT check valve



BRV-1220-2-03

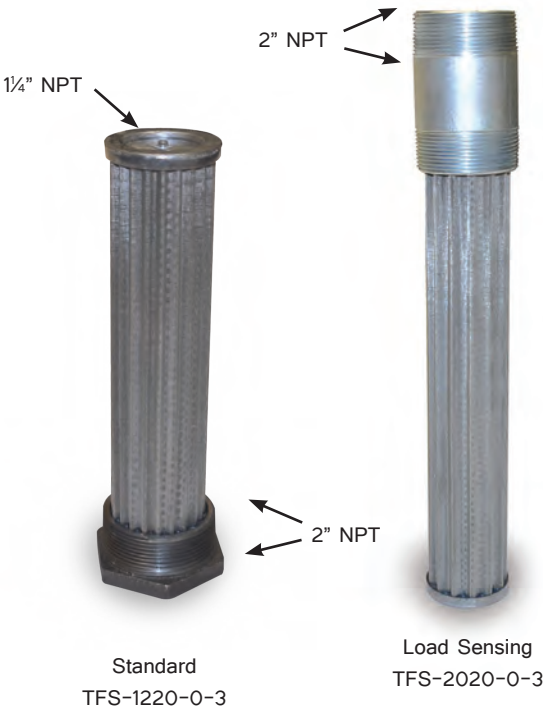
RESERVOIRS AND ACCESSORIES

Reservoir Accessories

Suction Strainers

- 100 mesh is standard
- Externally mounted with by-pass valve

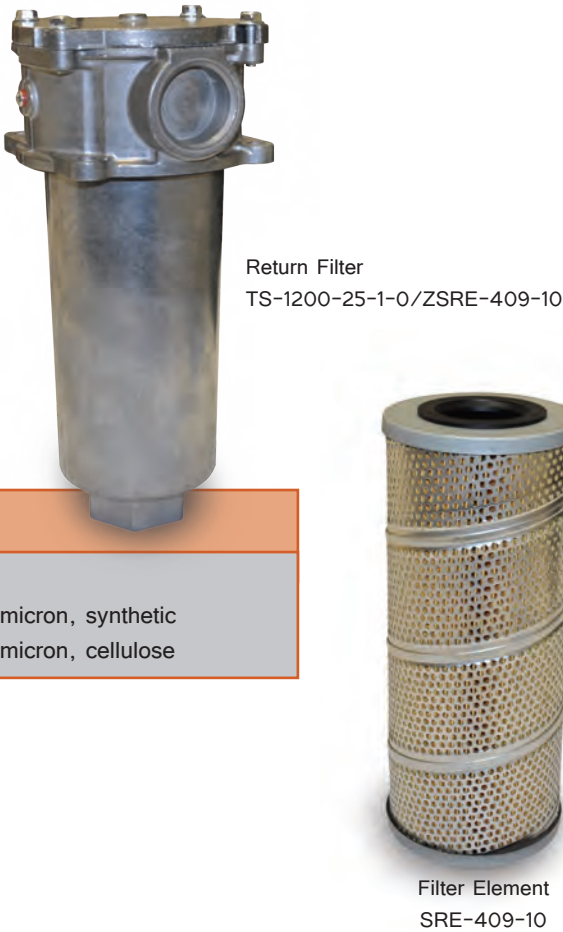
Part Number	Description
TFS-1220-0-3	2" NPT M x 1¼" NPT F, steel bushing, 25 GPM, 5 PSI-by-pass
TFS-2020-0-3	2" NPT M x 2" NPT M, cast iron bushing, 50 GPM, 3 PSI by-pass
TFS-2030-0-5	3" NPT M x 2" NPT F, steel bushing, 50 GPM, 5 PSI by-pass
TMS515-100-RB5	1½" NPT M x 1" NPT F, steel bushing, 15 GPM, 5 PSI by-pass



Reservoir Mounted Return

- Externally mounted return filter with 25 PSI by-pass valve
- One 1¼" NPT return port
- Gauge ports on both sides
- Bottom port 1½" NPT
- Includes O-ring seal between reservoir top filter housing
- Includes elements

Part Number	Description
TS-1200-25-1-0/ZSDSRE-409-10	Return filter assembly
ZSRE-409-10	Replacement element, 10 micron, synthetic
SRE-409-10	Replacement element, 10 micron, cellulose



In-Line Return Filters

- Easy to install disposable filter canister
- Interchangeable with most other canisters
- 25 PSI by-pass

Part Number	Description
ZAF-07-25-1-3	¾" NPT spin on filter head, gauge ports (uses 3.5" element)
ZAF-10-25-1-3	1" NPT spin on filter head, gauge ports (uses 3.5" element)
SF-100-25-1-3	1" NPT spin on filter head, gauge ports (uses 5" element)
SF-120-25-1-3	1¼" NPT spin on filter head, gauge ports (used 5" element)
F3653-10C*	3½" 10 micron cellulose spin on element, short
F5068-10C*	5" 10 micron cellulose spin on element, short
F5011-10C*	5" 10 micron cellulose spin on element, long

*25 micron elements also available

Please consult our sales department for other available options



In-line Return Filter
ZAF-07-25-1-3, Filter Head
F3653-10C, Element

Filters

Part Number	Description
P167294	1¼" NPT head with indicator
P165973	#20 filter head with indicator
P165569	Spin on element, 800 PSI, synthetic

Return Filter Condition Indicators

- Return line filter gauge indicates when to replace filter element
- For 25 PSI by-pass filter
- Also available 12 volt D.C. electrical pressure switch

Part Number	Description
PG-20	Gauge
PS-25	Pressure switch
CI-20L	Gauge, liquid



Gauge PG-20

WET LINE COMPONENTS

Hydraulic Dump Pumps

Features

- Cast iron construction with heavy duty roller bearings
- Control valve with built-in-relief to protect pump and cylinder
- Pressure balanced wear plates
- One piece drive shaft
- Pressures to 2500 PSI
- Speeds to 2400 RPM
- 2 or 3 line systems
- Splined shafts (SAE B, 13 tooth) may be direct mounted to PTO



Part Number	Shaft Style	GPM @ 1800 RPM	Inlet Size	Outlet Size	Return Size
C101-20	1" keyed	39	1 1/4" NPT	1" NPT	1" NPT
C101-25	1" keyed	48	1 1/4" NPT	1" NPT	1" NPT
C102-20	7/8" splined	39	1 1/4" NPT	1" NPT	1" NPT
C102-25	7/8" splined	48	1 1/4" NPT	1" NPT	1" NPT
G101-15	1" keyed	21	1 1/4" NPT	3/4" NPT	3/4" NPT
G101-20	1" keyed	29	1 1/4" NPT	3/4" NPT	3/4" NPT
G102-20	7/8" splined	29	1 1/4" NPT	3/4" NPT	3/4" NPT

Dump Pumps and Accessories

Part Number	Description
C101-102-AK	C101/102 Air shift cylinder with tubing and fittings
C101-102-AKS	C101/102 Air shift cylinder with tubing, fittings and toggle
314-9414-017	C101/102 Air shift cylinder
308-9414-049	G101/102 Air shift cylinder
01-5000-71	C101/102 Cable connection kit
01-5001-14	G101/102 Cable connection kit
391-3283-052	C101/102 & G101/102 Sleeve for 3rd line installation

Gear Pump

Bearing and Bushing style

- Direct mount or drive line driven
- Pressures up to 3500 PSI, depending upon displacement
- Single or tandem configurations
- Side or rear ported, o-ring or pipe ports



Power Take-off (PTO's)

Features

- Two gear power take-off for 6 and 8 bolt transmission openings (picture showing 6 bolt).
- Shifter options: (picture showing with air shift)
 - Air
 - Cable
 - Lever
 - Electronic
- Output Drive options
 - 1 1/4" keyed shaft for drive line applications
 - 1"-15T splined shaft for direct PTO mounting
- Pump mounting pad is SAE "B" with 2 or 4 bolt pattern (picture shown with SAE "B" pad).



Air Toggle

Part Number	Description
MJTV-3	2 position 3-way toggle switch
TV-4DMP	Air toggle switch with detent
TV-4DP	Air toggle switch with 3 position detent
TV-4MP	4 way 3 position on-off-on 1/8" NPT air toggle switch



WET LINE COMPONENTS

InControl Cab Control System

A modular dump body control system that handles all in-controls at one location.

InControl helps solve the problem of where and how to mount the hoist, PTO, tarp, lift axle and accessory electrical functions.



IC3 Tower with hoist, PTO, tailgate and tarp



IC5 Tower with hoist, PTO, tailgate, tarp and two lift axle

Modular design – Allows you to easily create a control package that meets your needs.

Three tower sizes – Select the size that fits the cab and handle all the control requirements in one tower.

Unlimited control types – Cable control, air control, and electrical control of hoist, PTO, tailgate, tarp and lift axles.

Many choices – Available options to meet all budgets, select the control type to match the fleet, spec and budget requirements.

Safety and comfort – Adjustable base option properly positions controls for driver operation.

Easy component access – Bolt on base, cover plates and rear cover allow ease of installation and service.

InControl Cab Control System

Specifications



IC3 Tower Controls

Compact size includes; air hoist/PTO, air tailgate and electric tarp

IC3F - option: 1 lift axle control

IC3NA/003

Order:

IC3NA, Tower

IC3TK-003, Top Kit



IC3FA/007/001

Order:

IC3FA, Tower

IC3TK-007, Top Kit

IC3FK-001, Front Kit



IC5 Tower Controls

Standard size includes: feathering, air hoist, Chelsea PTO (air valve supplied with PTO), air tailgate and electric tarp

IC5F - option: 2 lift axle control

IC5NA/011

Order:

IC5NA, Tower

IC5TK-011, Top Kit



IC5FA/011/005

Order:

IC5FA, Tower

IC5TK-011, Top Kit

IC5FK-005, Front Kit



IC7 Tower Controls

Full size includes; air hoist/PTO, air tailgate, electric tarp and one lift axle

IC7F - option: 3 lift axle control

IC7NA/008

Order:

IC7NA, Tower

IC7tk-008, Top Kit



IC7FA/008/002

Order:

IC7FA, Tower

IC7TK-008, Top Kit

IC7FK-002, Front Kit

Controls are shipped unassembled and include components shown without plumbing. Plumbing and reverse raise lift axle kits are available. Please contact FORCE America, Inc. for information on all available options.

WET LINE COMPONENTS

Hoist and PTO Air Controls

The FA295 operates both PTO and hoist in a single air control. Easy to read nomenclature and simplistic control handle make the FA295 user friendly. Durable construction offers a long life and minimizes vehicle downtime.

Specifications

Lowering	Feathered
Raise	Not feathered
Detent	Center Only
Fittings	Push to connect included
PTO Kick-Out	In lower position
PTO Light	12VDC
Mounting hardware	Included with tower

Part Number	Description
ACH-0001	8" Tower
ACH0013	13" Tower
ACH0016	16" Tower



Features

- Mechanical hoist interlock – The hoist interlock avoids inadvertent hoist operation, a must for operator safety and meets OSHA hoist control regulations
- Automated PTO kick out – Eliminates additional plumbing of PTO disengagement in lower position
- Feathered hoist lower – Infinite speed control preventing damaged frames, suspensions and jolting
- Single air inlet – Simplifies plumbing and reduces external fittings
- High strength and light weight construction – Driver comfort combined with the durability of single piece cast construction
- Extremely compact – Small size fits well in today's compact trucks
- Pre-engineered steel control tower – Save time and money with InControl towers designed for multiple installation types
- PTO red indicator light – Status indicator provides direct feedback or safe operation

Dump Pump Cable Controls

Features

- Unique “bonnet” connection protects valve spool and cable end
- Connection eliminates the need for special brackets or fabrication
- Compact thin profile controls may be stacked for multiple lever applications
- Neutral lever lock helps prevent accidental operation

Part Number	Description
08-5907-03	Control lever with neutral lock
FA2845*	Cable (as shown) specify length in inches*
01-5000-71	Cable connection kit
9121A001	Steel console stand



WET KIT ACCESSORIES

Barbed Ends

Part Number	Size
KN-075-U	¾"
KN-100-U	1"
KN-125-U	1¼"
KN-150-U	1½"
KN-200-U	2"



Bracket to Hold Filter and Bulkheads

Part Number
WET-KIT-BRACKET

*Brackets only, not as shown



Male Wing Coupler

Part Number	Size
6105-12	¾"
6105-16	1"
6105-20	1¼"
6105-24	1½"



Female Wing Coupler

Part Number	Size
FA6125-12	¾"
FA6125-16	1"
FA6125-20	1¼"
FA6125-24	1½"



Filters

Part Number	Description
P167294	1¼" NPT head with indicator
P165973	#20 Filter head with indicator
P165569	Spin on element 800 PSI, synthetic

Liquid Level Switches

Electrical liquid level switches for all types of applications where precise liquid level sensing is required

Part Number	Description
S1-L112-AC-DN-SS*	Level sender with slosh shield for 30 gal reservoir
S2-TSM10-L212-AC-DN-SS*	Temp/level sender with slosh shield for 30 gal reservoir

*Other lengths are also available

Please consult our sales department for other options

Air Line Filter/Regulator/Lubricator

- Filter – has 5 micron replaceable element
- Regulator – has locking adjustment knob with gauge ports on each side of regulator body, 0-150 PSI rated
- Lubricator – delivers constant ratio of oil to air flow
- Comes complete with 0-160 PSI gauge and mounting bracket

Part Number
F14G11B13FOGB

Inline Relief Valve

Part Number	Description
RV-1H	#12 ORB, 30 GPM, 1500-3000 PSI Adj., 2000 PSI Setting
RPL-16-A	#16 ORB, 60 GPM, 500-5000 PSI Adj., 3000 PSI Setting
C11850	#16 ORB, 60 GPM, 500-3000 PSI Adj., 3000 PSI Setting
C11516	#16 ORB, 60 GPM, 500-3000 PSI Adj., 3000 PSI Setting, Dual Relief



Ball Valve

Part Number	Description
S95E41	¾" Ball valve
S95F41	1" Ball valve
S95G41	1¼" Ball valve
S95H41	1½" Ball valve
S95I41	2" Ball valve



Bulkhead Fitting

Part Number	Description
2700-LN-16-16	JIC X JIC bulkhead
2706-LN-16-16	NPT X JIC bulkhead



Suction Hose

Part Number	Size
H036312BK-100	¾"
H036316BK-100	1"
H036320BK-100	1¼"
H036324BK-100	1½"
H036332BK-100	2"

Hose Clamps

Part Number	Size
HC-070	¾"
HC-100	1"
HC-125	1¼"
HC-150	1½"
HC-200	2"



Female Dust Cap

Part Number	Size
6109-12	¾"
6109-16	1"
6109-20	1¼"
6109-24	1½"



Male Dust Cap

Part Number	Size
6108-12	¾"
6108-16	1"
6108-20	1¼"
6108-24	1½"





1-888-99-FORCE

501 East Cliff Road Burnsville, Minnesota 55337 www.forceamerica.com

Sales and Service Centers

© 2020 FORCE America, Inc.
FA991-0420-04

Bismarck, ND	800-624-7568	Denver, CO	888-833-7711	Minneapolis, MN	800-328-2732
Charlotte, NC	800-788-8598	Fort Dodge, IA	800-362-2994	Philadelphia, PA	800-492-6621
Chicago, IL	800-433-5765	Kansas City, MO	800-383-4724	Salt Lake City, UT	877-230-0505
Columbus, OH	888-449-0356	Memphis, TN	888-845-5876		
Dallas, TX	800-893-7225	Milwaukee, WI	800-722-5844		
Atlanta, GA (Atlanta Powertrain™)			888-293-2325	atlantapowertrain.com	
Seattle, WA (Mobile Equipment Systems™)			800-354-9028	mobileequip.com	