

Parker Commercial Dump Pumps provide the most reliable, trouble-free controls for dump trucks and trailer applications in our industry. The relief valve protects the driver, pump and cylinder in all positions: raise, hold, neutral and lower.

FEATURES

- **Genuine Parker Commercial Hydraulics**
- **Available in G102, SG102 and C102 Series to meet your flow range needs**
- **Maximum speed rating up to 2400 rpm**
- **Maximum pressure rating up to 2500 psi**
- **Integrated Relief Valve, Protects Pump and Hoist Cylinder**
- **Factory Installed Air Shift Available**
- **3-Line Sleeve Standard**
- **In-stock with same day shipping**
- **Shop FORCE America for a full line of wet kit accessories**
 - Parker Chelsea Power Take Offs
 - Air and Cable Control Towers
 - Full Range of Reservoir Kits and Accessories
 - Wing and Quick Couplers
 - Hose and Fitting Kits
 - Ball Valves and Other Accessory Valves

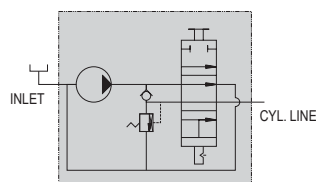


Dump Pumps

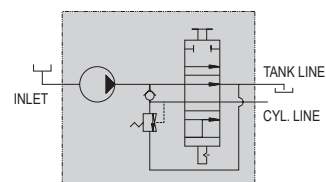
Typical Flow Paths

Explanation of single-acting valve:

2-line Installation
For intermittent operation.

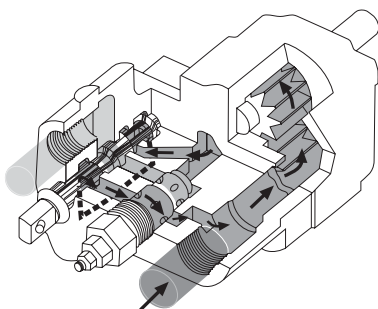


3-line Installation
For continuous or intermittent operation.

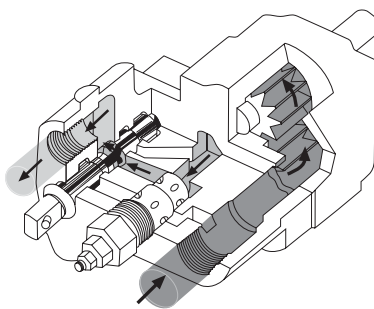


2-line Installation

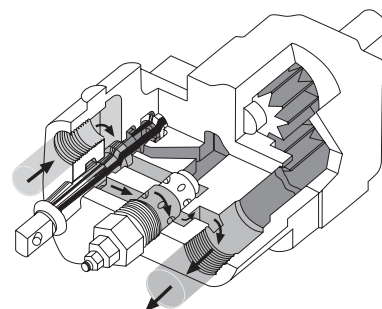
One line to the cylinder, one line to the reservoir.
For intermittent operation only.



Spool in Neutral:
Oil recirculates internally.



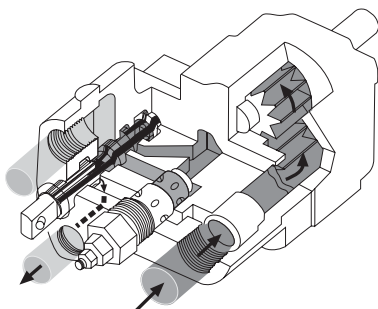
Raise Position:
Oil is routed through work port to raise the cylinder.



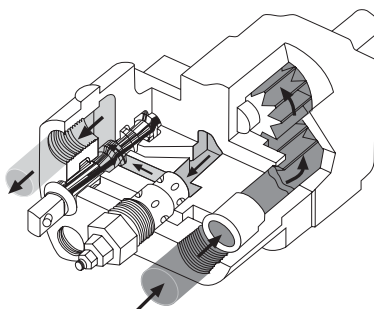
Lower Position:
Oil flows from the cylinder through the relief valve to return to tank.

3-line Installation

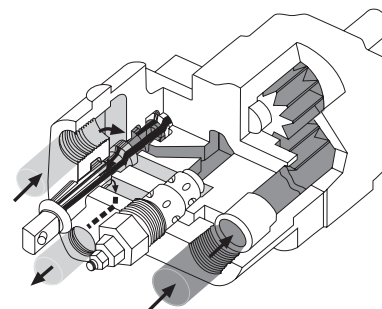
One line to the cylinder, two lines to the reservoir.
For continuous or intermittent operation.



Spool in Neutral:
Oil circulates through the pump and returns to tank.



Raise Position:
Oil is routed through work port to raise the cylinder.

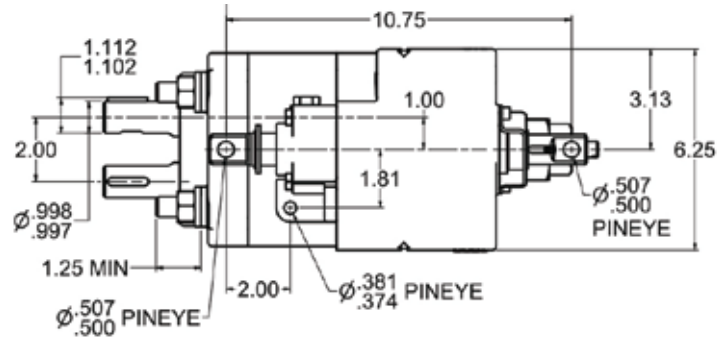
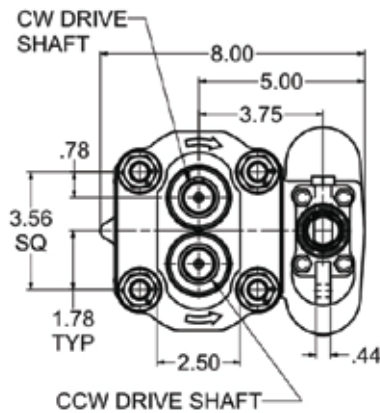
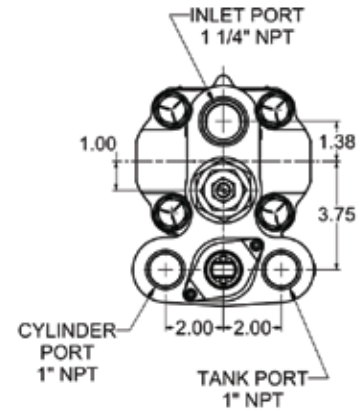
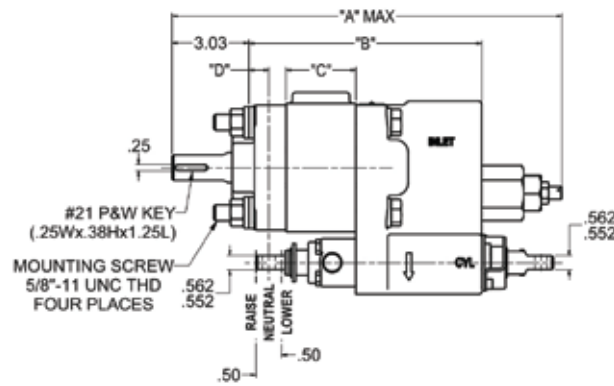


Lower Position:
Oil flows from the cylinder, through the bottom port and returns to tank.

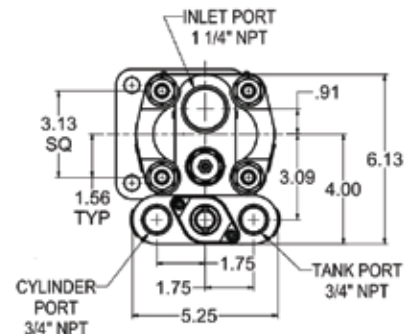
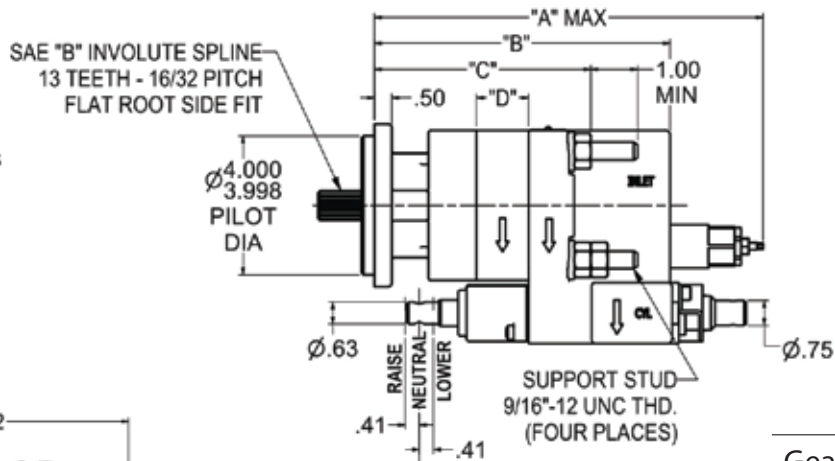
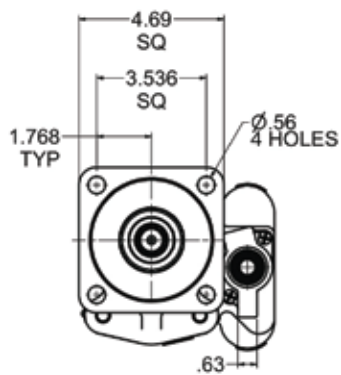
C 1 0 1 D U M P P U M P

C101 Dimensions

Gear	2.00"	2.50"
"A"	15.13	16.13
"B"	9.16	9.66
"C"	2.75	3.25
"D"	0.75	1.25
Wt (lbs)	64	67



G 1 0 2 D U M P P U M P



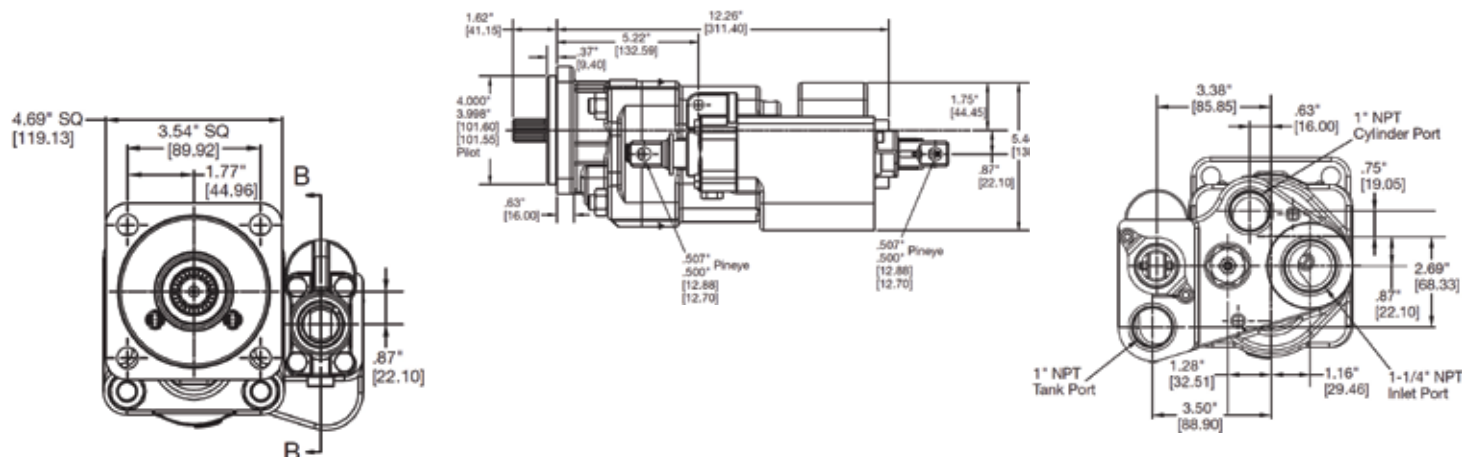
G102 Dimensions

Gear	0.75"	1.50"	2.00"
"A"	11.25	12.00	12.50
"B"	8.50	9.25	9.25
"C"	6.30	7.00	7.50
"D"	1.50	2.25	2.75
Wt (lbs)	37	40	42

Dump Pumps

G102, SG102 & C102

SG102 DUMP PUMP



TECHNICAL SPECIFICATIONS

FEATURES	Standard C102	Standard G102	SG102
Displacement (in ³ /Rev)	6.38	3.94	4.93
Weight (lb)	70	42	56
Height (in)	6.25	5.25	5.44
Width (in)	8.00	6.13	6.91
Length (in)	15	12.5	14.46
Theo. Flow at 1800 rpm	49.7	30.7	38.4
Pressure (psi)	up to 2500	up to 2500	up to 2500
Speed Range (rpm)	up to 2400	up to 2400	up to 2400
Shaft	SAE "B" 13T	SAE "B" 13T	SAE "B" 13T
Flange	SAE "B" 4-Bolt	SAE "B" 4-Bolt	SAE "B" 4-Bolt
Material	Cast Iron	Cast Iron	Cast Iron
Porting	1 - 1/4" x 1" NPT	1 - 1/4" x 1" NPT	1 - 1/4" x 1" NPT
Spool Action	Manual or Air	Manual or Air	Manual or Air
Support	Extended Studs	Extended Studs	Threaded Holes

Part Number	Description
314-9325-227	C102 6.38 in ³ /rev, 7/8 - 13T Splined Shaft, 4 Bolt SAE - B Flange with Airshift & 3-Line Sleeve, CCW
314-9325-229	C102 6.38 in ³ /rev, 7/8 - 13T Splined Shaft, 4 Bolt SAE - B Flange with 3-Line Sleeve, CCW
308-9310-418	G102 3.94 in ³ /rev, 7/8 - 13T Splined Shaft, 4 Bolt SAE - B Flange with 3-Line Sleeve, CCW
308-9310-903	G102 3.94 in ³ /rev, 7/8 - 13T Splined Shaft, 4 Bolt SAE - B Flange with Airshift and 3-Line Sleeve, CW
318-9111-002	SG102 4.93 in ³ /rev, 7/8 - 13T Splined Shaft, 4 Bolt SAE - B Flange with Airshift and 3-Line Sleeve, CW

1-888-99-FORCE

501 East Cliff Road Burnsville, Minnesota 55337 www.forceamerica.com

Sales and Service Centers

© 2020 FORCE America, Inc.
FA1077-0320-02

Bismarck, ND	800-624-7568	Denver, CO	888-833-7711	Minneapolis, MN	800-328-2732
Charlotte, NC	800-788-8598	Fort Dodge, IA	800-362-2994	Philadelphia, PA	800-492-6621
Chicago, IL	800-433-5765	Kansas City, MO	800-383-4724	Salt Lake City, UT	877-230-0505
Columbus, OH	888-449-0356	Memphis, TN	888-845-5876		
Dallas, TX	800-893-7225	Milwaukee, WI	800-722-5844		

Atlanta, GA (Atlanta Powertrain™)	888-293-2325	atlantapowertrain.com
Seattle, WA (Mobile Equipment Systems™)	800-354-9028	mobileequip.com