

# CONFIGURABLE COMPONENT OPTIONS

## OIL TANK OPTIONS

### SQUARE POLY TANKS

#### HORIZONTAL

PART NUMBER	USABLE Gal.
K-PXS01H	.21
K-PXS02H	.29
K-PXS03H	.47



#### HORIZONTAL

K-PXS04H	.71
K-PXS05H	1.26
K-PXS08H	1.9



#### DIAGONAL

K-PXS04D	.71
K-PXS05D	1.26
K-PXS08D	1.9



### SQUARE STEEL TANKS

#### HORIZONTAL

PART NUMBER	USABLE Gal.
K-XS05H	1.1
K-XS05SH	1.1
K-XS06H	.97
K-XS07H	1.24
K-XS20H	4.22



#### DIAGONAL

K-XS04D	.73
---------	-----

#### VERTICAL

K-XS09V	1.8
K-XS12V	2.4
K-XS15V	3.22
K-XS25V	5.2
K-XS30V	6
K-XS50V	13.2



### ROUND STEEL TANKS

#### HORIZONTAL

PART NUMBER	USABLE Gal.
K-XR01H	.23
K-XR02H	.5
K-XR03H	.6
K-XR04H	.79
K-XR05H	1
K-XR06H	1.32
K-XR08H	1.58
K-XR11H	2.5



#### VERTICAL

K-XR01V	.23
K-XR02V	.5
K-XR03V	.6
K-XR04V	.76
K-XR05V	1.1
K-XR06V	1.5
K-XR08V	1.76



#### DIAGONAL

K-XR04D	.55
K-XR05D	1
K-XR06D	1.4
K-XR08D	1.7
K-XR11D	2.7



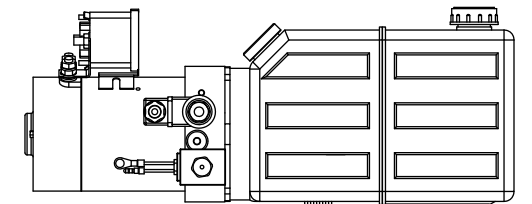
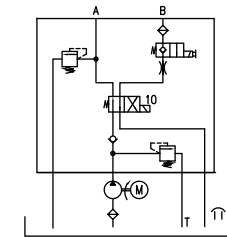
# HYDRAULIC Mini Power Pack

## TYPICAL APPLICATIONS

### DUMP BED

#### POWER UP / POWER DOWN

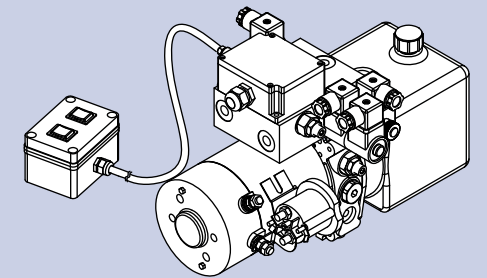
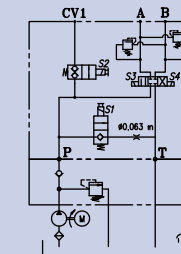
- 1600 WATT 12VDC MOTOR
- .128 CI PUMP
- 2500 PSI ADJ MAIN RELIEF
- CHECK VALVE, 1500 PSI A-PORT RELIEF, 2.1 GPM FLOW CONTROL ON B PORT
- DOUBLE ACTING, DOUBLE SOLENOID VALVE - PENDANT OPTIONAL



### SNOW PLOW

#### POWER UP / GRAVITY DOWN W/FLOAT, POWER LEFT / RIGHT

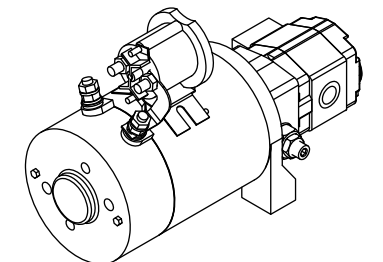
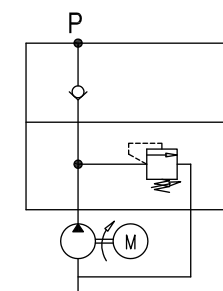
- 1600 WATT 12VDC MOTOR
- .097 CI PUMP
- 2500 PSI ADJ MAIN RELIEF
- CHECK VALVE
- 3/WAY & 4/WAY SOLENOID VALVES - W/ SWITCH BOX



### AUXILIARY POWER UNIT

#### EMERGENCY BACKUP POWER

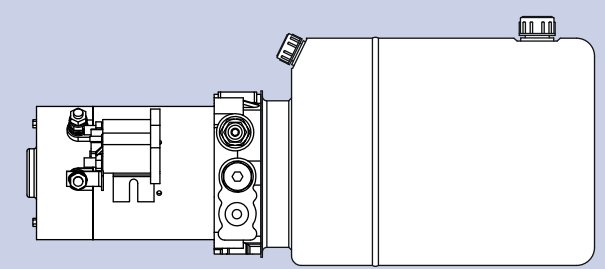
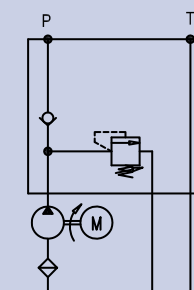
- 1600 WATT 12VDC MOTOR
- .128 CI PUMP
- 2500 PSI ADJ MAIN RELIEF
- CHECK VALVE
- BACKUP POWER UNIT



### TRUCK CRANE

#### RELIEF PROTECTED POWER FOR EXTERNAL VALVES

- 1600 WATT 12VDC MOTOR
- .128 CI PUMP
- 2500 PSI ADJ MAIN RELIEF
- CHECK VALVE



1-888-99-FORCE

501 East Cliff Road Burnsville, Minnesota 55337 www.forceamerica.com

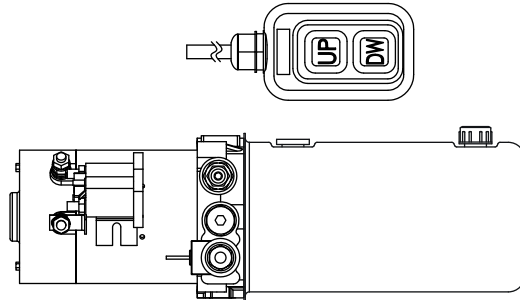
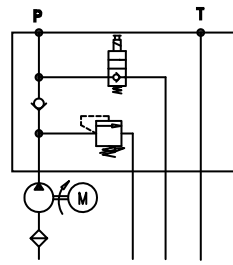
Bismarck, ND	800-624-7568	Denver, CO	888-833-7711	Minneapolis, MN	800-328-2732
Charlotte, NC	800-788-8598	Fort Dodge, IA	800-362-2994	Philadelphia, PA	800-492-6621
Chicago, IL	800-433-5765	Kansas City, MO	800-383-4724	Salt Lake City, UT	877-230-0505
Columbus, OH	888-449-0356	Memphis, TN	888-845-5876		
Dallas, TX	800-893-7225	Milwaukee, WI	800-722-5844		

Atlanta, GA (Atlanta Powertrain™) 888-293-2325 www.atlantapowertrain.com  
Seattle, WA (Mobile Equipment Systems™) 800-354-9028 www.mobileequip.com

## TAILGATE LIFT

POWER UP / GRAVITY DOWN

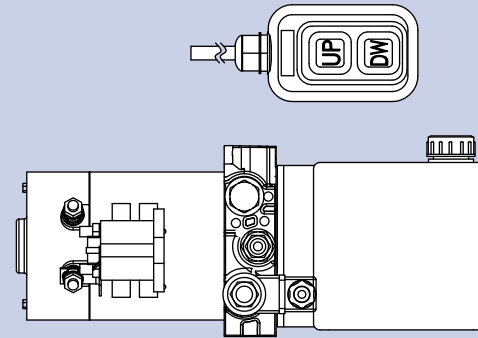
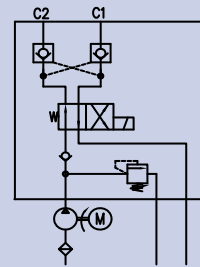
- 1600 WATT 12VDC MOTOR
- .128 CI PUMP
- 2500 PSI ADJ MAIN RELIEF
- CHECK VALVE
- SINGLE ACTING SOLENOID VALVE – W/ PENDANT



## BALE SPIKE

POWER UP/ POWER DOWN

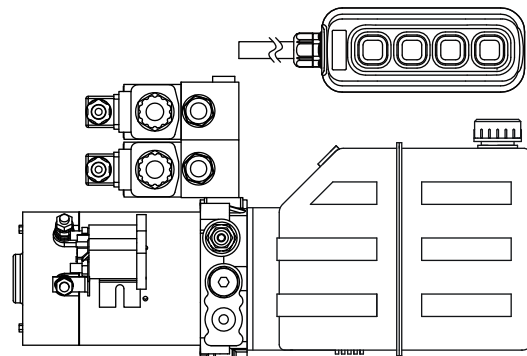
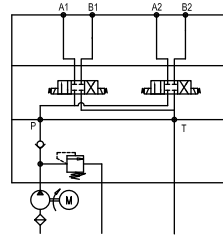
- 1600 WATT 12VDC MOTOR
- .128 CI PUMP
- 2500 PSI ADJ MAIN RELIEF
- CHECK VALVE AND P.O. CHECKS ON WORK PORTS
- DOUBLE ACTING, SINGLE SOLENOID VALVE – W/ PENDANT



## BUCKET TRUCK

POWER UP / POWER DOWN  
POWER LEFT / POWER RIGHT

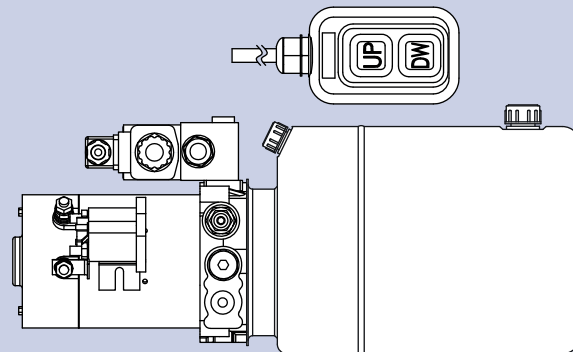
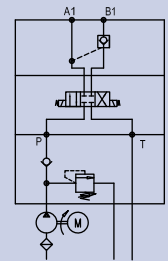
- 1600 WATT 12VDC MOTOR
- .128 CI PUMP
- 2500 PSI ADJ MAIN RELIEF
- CHECK VALVE
- 2-DOUBLE ACTING SOLENOID VALVE – W/ PENDANT



## SOLENOID OPERATED

POWER UP / POWER DOWN

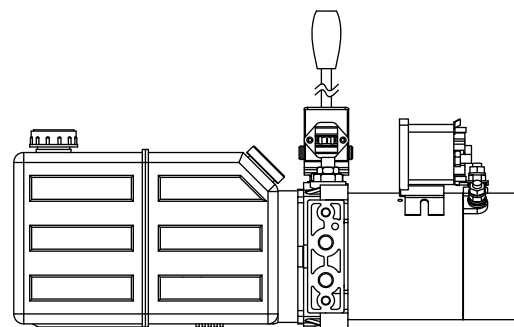
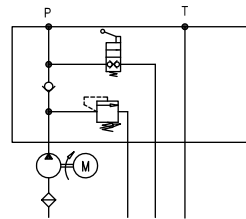
- 1600 WATT 12VDC MOTOR
- .128 CI PUMP
- 2500 PSI ADJ MAIN RELIEF
- CHECK VALVE AND P.O. CHECK ON "B" PORT
- DOUBLE ACTING SOLENOID VALVE – W/ PENDANT



## MANUAL LEVER

POWER UP / GRAVITY DOWN

- 1600 WATT 12VDC MOTOR
- .128 CI PUMP
- 2500 PSI ADJ MAIN RELIEF
- CHECK VALVE
- SINGLE ACTING MANUAL VALVE



# CONFIGURABLE COMPONENT OPTIONS

## DC-MOTOR OPTIONS

### STANDARD & HEAVY DUTY

MODEL #	VOLTAGE (V)	POWER (W)	DUTY CYCLES S2min - S3%
D116XX	12	1600	4min-8% ED
D222XX	24	2200	2min-7.5% ED
D120XX	12	2000	7.5min-20% ED

### EXTRA HEAVY DUTY

D124XX	12	2400	1.8min-7% ED
--------	----	------	--------------

### EXTENDED DUTY

L116XX	12	1600	20min-40% ED
L230XX	24	3000	13min-28% ED



D116XX  
D222XX  
D120XX



D124XX



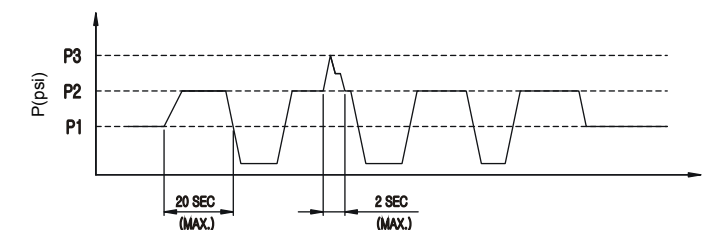
L116XX



L230XX

## GEAR PUMP OPTIONS

MODEL #	DISPLACEMENT (CI / rev)	PRESSURE (psi)		
		P1	P2	P3
GO11	.067	3300	3600	3900
GO16	.097			
GO21	.128			
GO23	.146			
GO27	.164			
GO32	.195	3000	3300	3600
GO37	.225			
GO42	.256			
GO48	.292	2750	3000	3300
GO58	.353			
GO70	.427			
GO80	.488			
GO98	.598			



P3 = Peak Max. Pressure  
P2 = Intermittent Max. Pressure  
P1 = Continuous Max. Pressure