

INCONTROL™

A modular dump body control system that handles all in-cab controls at one location. InControl helps solve the problem of where and how to mount the hoist, PTO, tarp, lift axle and accessory electrical functions.

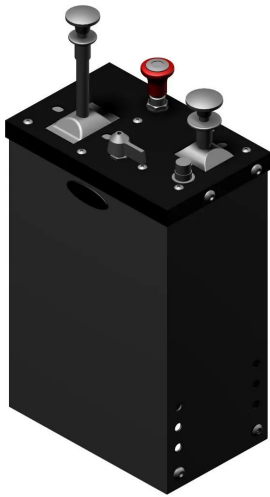
DUMP BODY CONTROLS



FEATURES

- ✓ Modular design - allows you to easily create a control package that meets your needs
- ✓ Two tower sizes - select the size that fits the cab and handles all the control requirements in one tower
- ✓ Unlimited control types - cable control, air control, and electric control of Hoist, PTO, Tailgate, Tarp, and Lift Axles
- ✓ Many choices - options exist to meet all budgets, select the control type to match the fleet, spec and budget requirements
- ✓ Safety and comfort - adjustable base option locates controls in the proper position for driver operation
- ✓ Easy component access - bolt on base, cover plates and rear cover allow ease of installation and service

SPECIFICATIONS



IC5NA/011

IC5 Tower Controls:

Standard size includes: feathering air hoist, Chelsea PTO (air valve supplied w/PTO), air tailgate, and electric tarp

IC5F - Option: 2 lift axle control



IC5FA/011/005



IC7NA/008

IC7 Tower Controls:

Full size includes: air hoist/PTO, air tailgate, electric tarp, and one lift axle

IC7F - Option: 3 lift axle control



IC7FA/008/002

Controls can be shipped assembled or unassembled and include components shown less plumbing. Plumbing and reverse raise axle kits are available.

Please contact FORCE America, Inc. for more information on all available options.