

SSC6100

The 6100 control system is the industry-leading integrated CAN Bus joystick and spreader controller. Embedded within the 10" color LCD, this controller comes fully equipped with camera integration and PreCise® MRM cellular and GPS technologies greatly reducing the footprint of components within the cab.



FEATURES

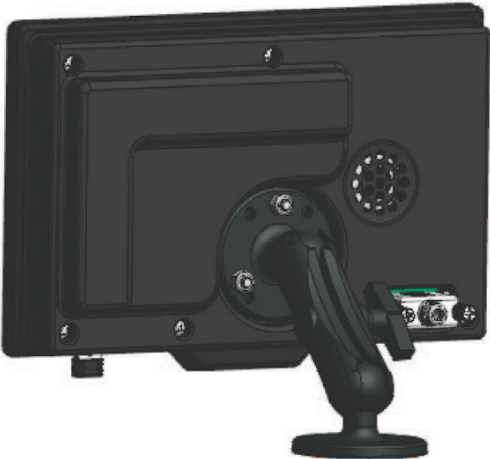
- ✓ **High Resolution 10" Color LCD**
 Displays information-rich graphical spreader data with up to three camera feeds, eliminating the need for multiple displays
- ✓ **CAN Bus Central Processing**
 Provides high-level diagnostics and eliminates bulky harnessing
- ✓ **Connectivity**
 Plug-and-play with a single connector to a trailer system, spreader body or other slide in attachments
- ✓ **AVL/GPS Integration Onboard**
 Fully integrated with PreCise® MRM hardware and antennas for accurate reporting on route, location, material application, accessory details and more
- ✓ **Wireless Technology**
 Integrated support for PreCise MRM ARC Wireless Air & Road Conditions System
- ✓ **Joystick Options**
 Available as a standalone spreader controller or integrated within our Patrol Commander® Ultra or CommandAll® Single joystick consoles
- ✓ **On Screen Training Videos**
 Learn and understand the controller with ease with our integrated tutorial videos available on the screen



PRODUCT & TECHNICAL SPECIFICATIONS

Monitor Size 6.4" H x 9.6" W x 2.6" D
 Case Material ABS plastic
 Screen Size 10.1"
 Screen Resolution 1024 x 600 px
 Touch Panel Capacitive
 Backlighting LED
 Operating Voltage 9-16 VDC
 Operating Current 2A
 Max System Current 40A
 Discrete Digital Inputs3
 Current Loop (4-20mA) Input..... 1
 Dashkey Input 1
 Speedometer Dual Adjustable Trip Point, with pull up enable
 USB 2.0 Type A 2
 Composite Video Camera Inputs3

Outputs..... 8
 Relay Outputs 1-5..... Shared 10A
 Solid State Outputs 6-8..... 0.25A Each
 5V Reference 0.1A Limited
 12V Reference 0.1A Limited
 Connectivity.....4G Cellular/GPS/2.4 Ghz 802.15.4, Dual Carrier
 Electrical Protection Type..... Over-current reverse polarity, load dump, ESD
 Electrical Testing..... J1113/4: Bulk Current Injection 1-400MHz
 J1113/21: Immunity to Electromagnetic Fields 20-1000MHz
 CISPR 25: RF Radiated Emissions
 J1113/13: ESD 4 & 8kV Direct, 4/8/15kV Air
 Mechanical TestingSAE1455 Shock
 SAE1455 Swept Sine Vibration
 SAE1455 Random Vibration



Bright, bold 10" color LCD screen featuring thin borders, capacitance touch for ease of calibration, and a fully-adjustable mounting option for quick installation.



Cellular Technology

Convenient over-the-air updates, configuration and troubleshooting.

Ability to send camera images over the air.



Two USB Ports

Import and export settings without the need of a computer.



AVL/GPS Integration with built in Antenna

Integrated PreCise MRM hardware & antennas for accurate mapping, reporting and real-time information.



Multiple Camera Feeds

Supports three camera feeds, eliminating the need for multiple displays within the cab.