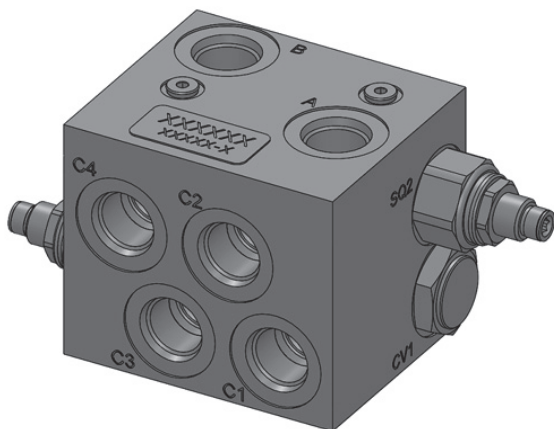
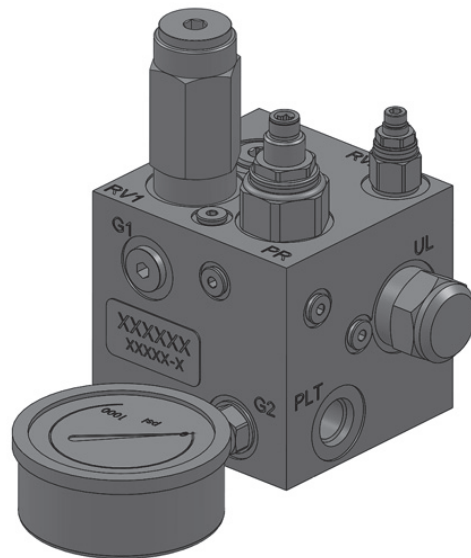
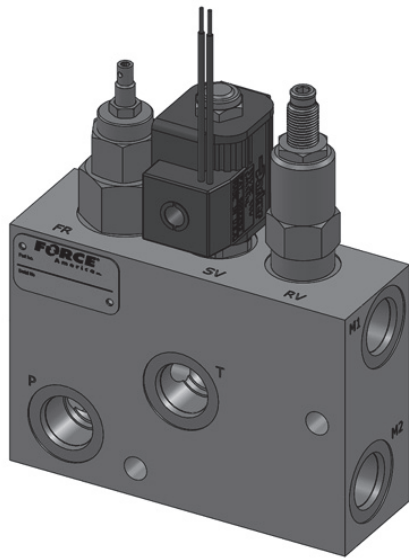
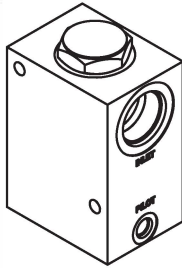


# Pre-Engineered Valves

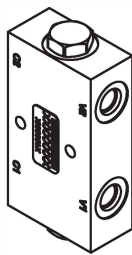
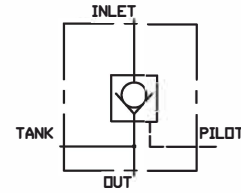
---



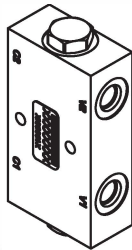
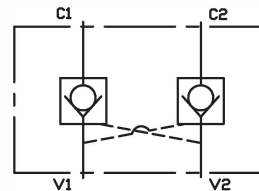
# Pilot Operated Check



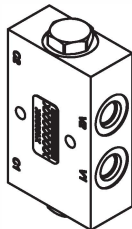
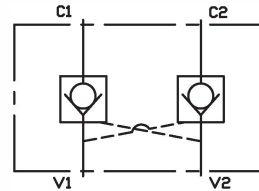
Part Number C10878  
Pilot operated Check  
35 GPM 5000 PSI  
SAE 20 Ports  
2.5:1 Ratio



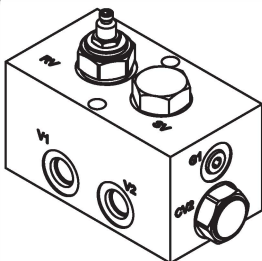
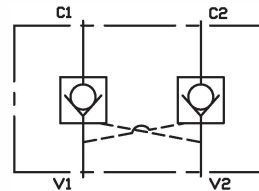
Part Number: C10938  
Dual Pilot operated Check  
18 GPM 5000 PSI  
SAE 10 Ports  
4:1 ratio Pilot Piston with seal



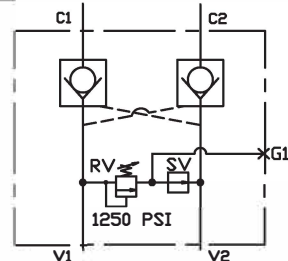
Part Number: C11046  
Dual Pilot operated Check  
5 GPM 3000 PSI  
SAE 06 Ports  
3:1 ratio Pilot Piston with seal  
V1 & V2 Ports match Metro valve



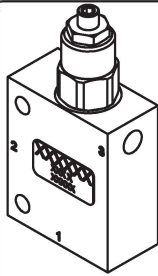
Part Number: C11065  
Dual Pilot operated Check  
6 GPM 3500 PSI  
SAE 06 Ports  
4:1 ratio Pilot Piston with seal



Part Number: C10258  
Dual Pilot operated Check  
with V1 Relief  
5 GPM 3000 PSI  
SAE 06 Ports  
3:1 ratio Pilot Piston with seal



# Counterbalance



Part number: C11312

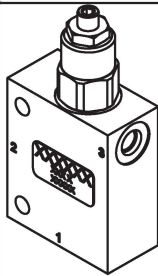
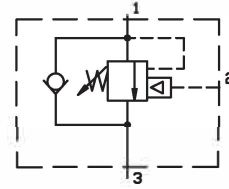
Counterbalance

10 GPM 3000 PSI

3/8 NPT Ports

Available ratio

2:1, 5:1 & 10:1



Part number: C11314

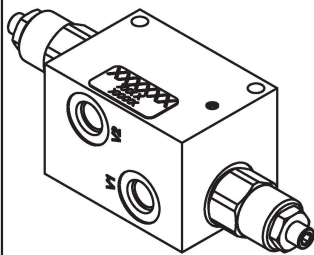
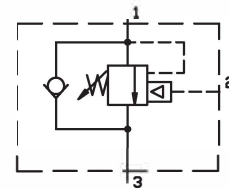
Counterbalance

10 GPM 3000 PSI

SAE 08 Ports

Available ratio

2:1, 5:1 & 10:1



Part number: C11148

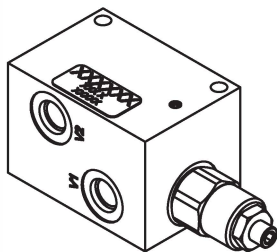
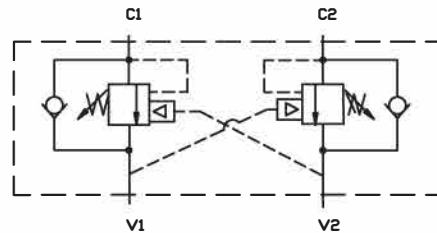
Counterbalance

10 GPM 3000 PSI

SAE 06 Ports

Available ratio

2:1, 5:1 & 10:1



Part number: C11491

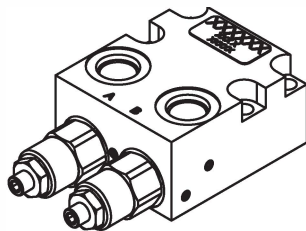
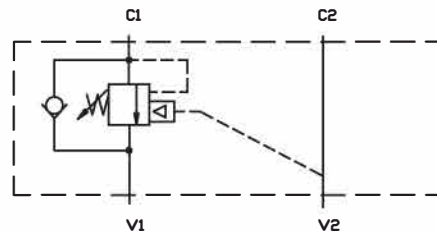
Counterbalance

10 GPM 3000 PSI

SAE 06 Ports

Available ratio

2:1, 5:1 & 10:1



Part number: C10828

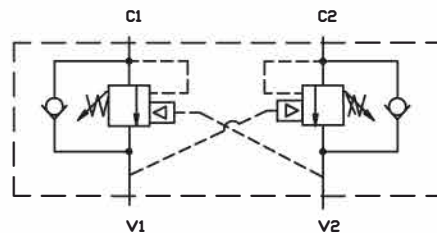
Counterbalance

10 GPM 3000 PSI

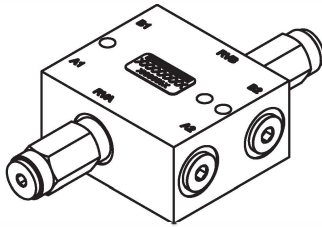
Eaton H series Mount

Available ratio

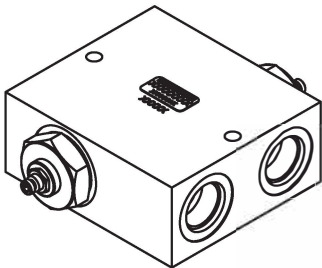
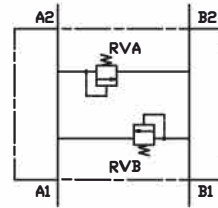
2:1, 5:1 & 10:1



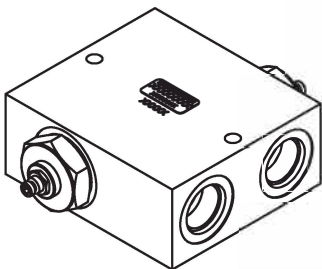
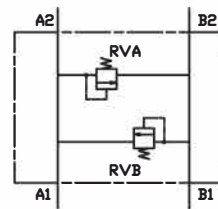
# Reliefs



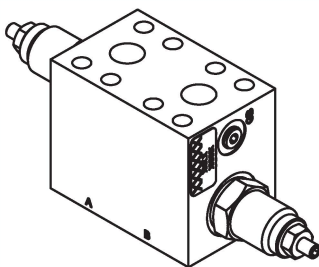
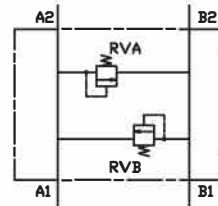
Part Number: C11020  
Cross Port Reliefs  
25 GPM 5000 PSI SAE  
08 Ports



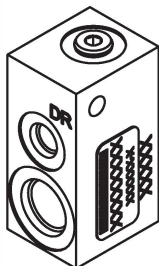
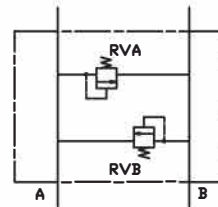
Part Number: C10262  
Cross Port Reliefs  
60 GPM 3000 PSI SAE  
16 Ports



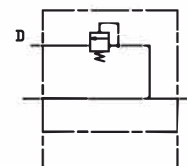
Part Number: C10268  
Cross Port Reliefs  
100 GPM 3000 PSI SAE  
20 Ports



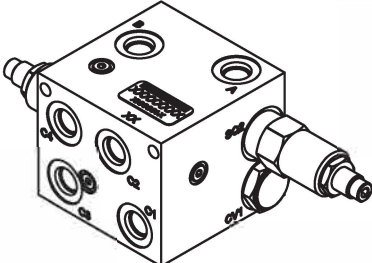
Part Number: C11418  
Cross Port Reliefs  
30 GPM 5000 PSI  
Eaton 4000 & 6000  
Series motor



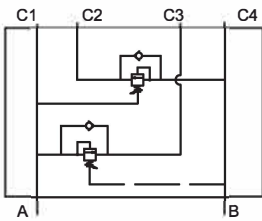
Part Number: C10684  
Thermal Relief  
.5 GPM 3000 PSI SAE  
08 Ports

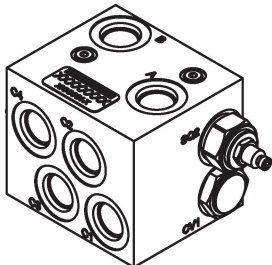


# Sequence

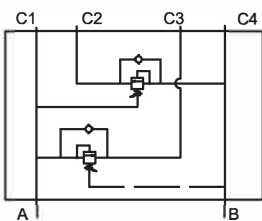


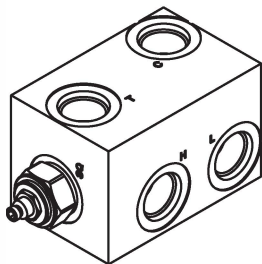
Part Number: 9380A001  
 DUAL SEQUENCE  
 5 GPM 3000 PSI  
 SAE 6 Ports



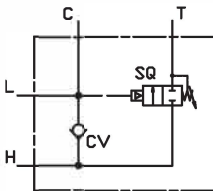


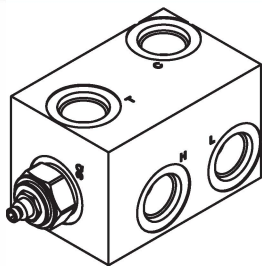
Part Number: C10952  
 DUAL SEQUENCE  
 15 GPM 3000 PSI  
 SAE 8 Ports



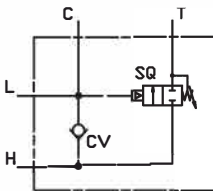


Part Number: C10637  
 SEQUENCE, HIGH/LOW  
 20 GPM 3000 PSI  
 SAE 12 Ports

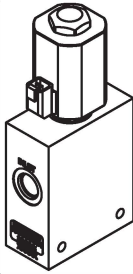




Part Number: C10810  
 SEQUENCE, HIGH/LOW  
 40 GPM 3000 PSI  
 SAE 16 Ports



# Selector

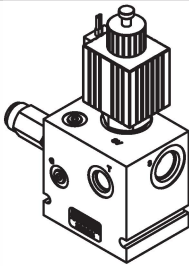
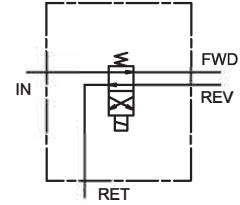


Part Number: C10708

Selector

15 GPM 3000 PSI

SAE 10 Ports

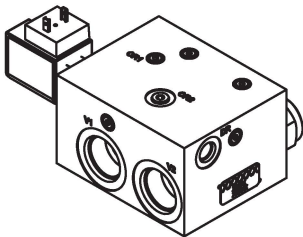
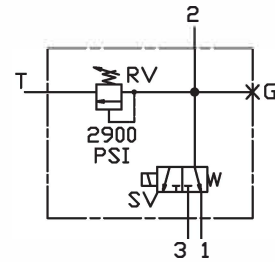


Part Number: C10636

Selector

15 GPM 3000 PSI

SAE 10 Ports

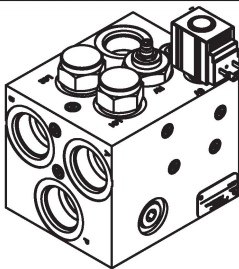
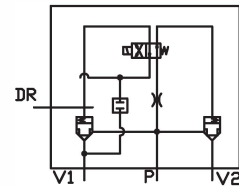


Part Number: C10060

Selector

45 GPM 3000 PSI

SAE 16 Ports

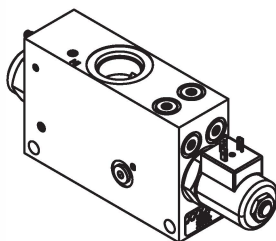
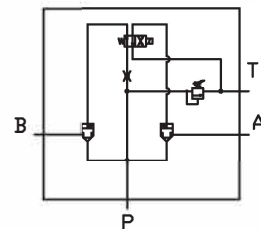


Part Number: C10150

Selector with Relief

45 GPM 5000 PSI

SAE 16 Ports

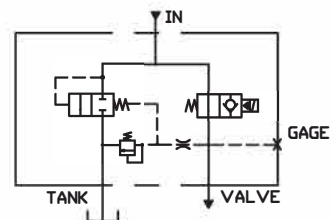


Part Number: 9345A060

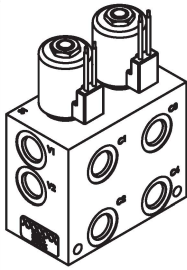
Selector

60 GPM 3000 PSI

SAE 20 Ports



# Multiplier



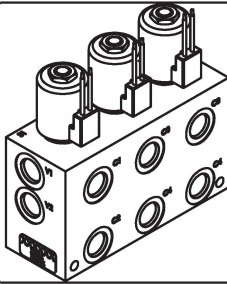
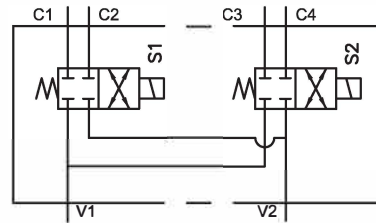
Part Number: 9014001

Multi-Selector

Normally closed

12 GPM 3000 PSI

SAE 08 Ports



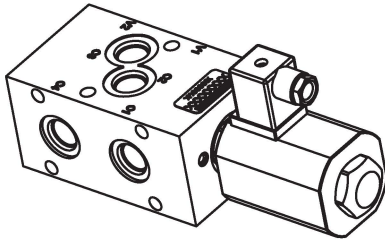
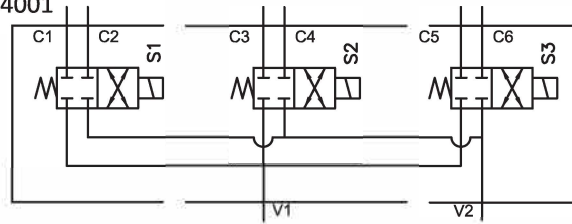
Part Number: 9314001

Multi-Selector

Normally closed

12 GPM 3000 PSI

SAE 08 Ports



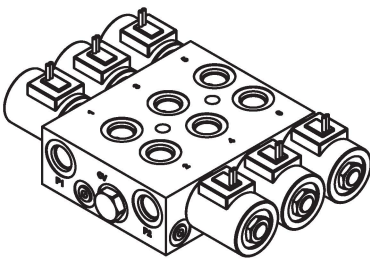
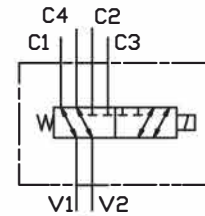
Part Number: C10964

Stackable Selector

12 GPM 3000 PSI

SAE 08 Ports

Parker MD06 mount



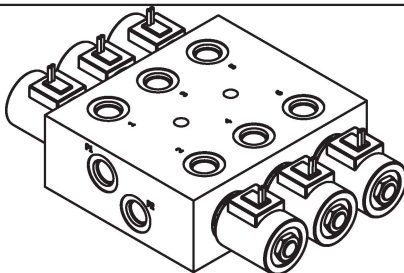
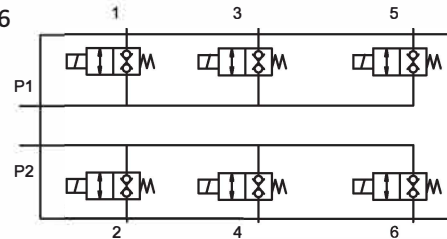
Part Number: C11176

Multi-Selector

Normally closed

16 GPM 3000 PSI

SAE 08 Ports



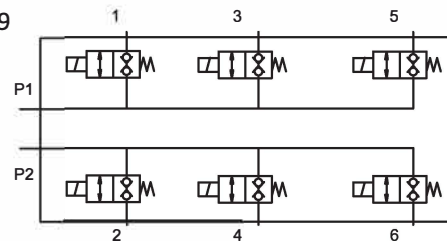
Part Number: C11179

Multi-Selector

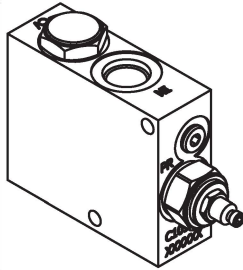
Normally closed

20 GPM 3000 PSI

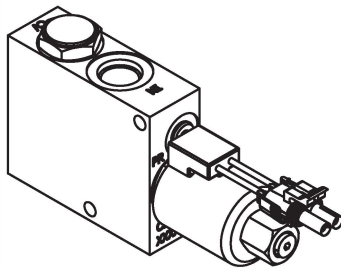
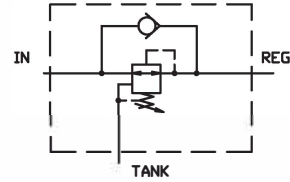
SAE 08 Ports



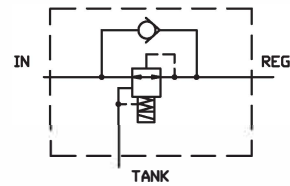
## Pressure Reducing



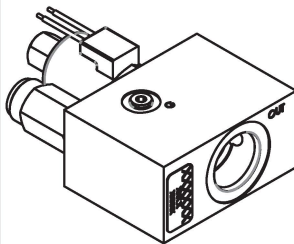
Part number: C10956  
Pressure Reducing  
With Rev. Flow Check  
10 GPM 3000 PSI  
SAE 08 Ports



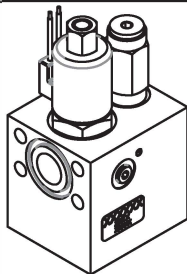
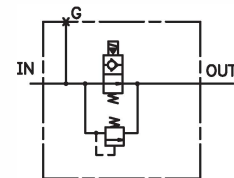
Part number: C11326  
Proportional Pressure Reducing  
With Rev. Flow Check  
10 GPM 3000 PSI  
SAE 08 Ports



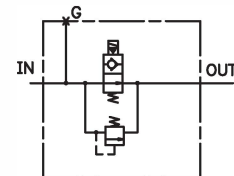
## Pump Shut Off



Part Number: 9172A001  
Pump Shut Off  
35 GPM 3000 PSI  
SAE 16 Port  
  
Part Number: 9172H001  
4200 PSI

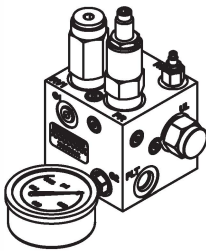


Part Number: 9332A001  
Pump Shut Off  
35 GPM 3000 PSI  
SAE 16 Port  
1"S.F.Mount

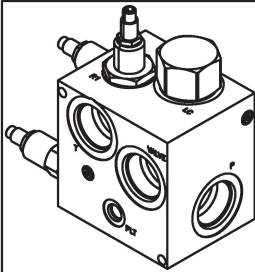
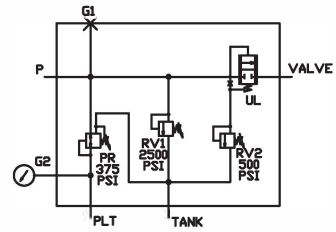




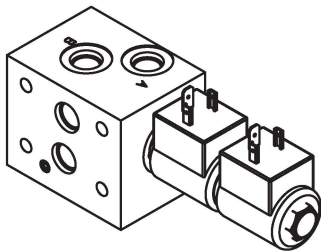
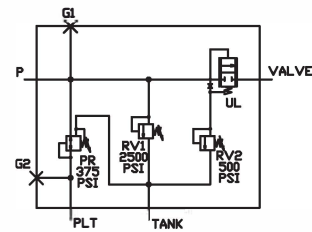
# Pilot Pressure Control



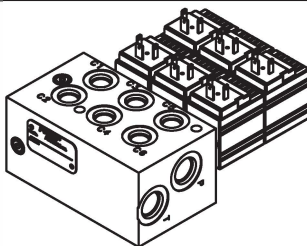
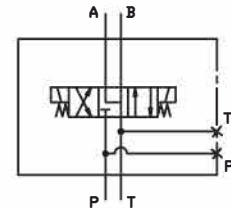
Part Number: C10122  
Pilot pressure build up  
15 GPM 3000 PSI  
SAE 12 Ports



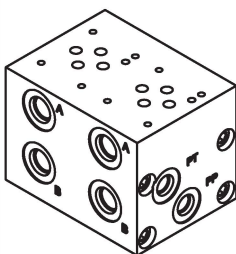
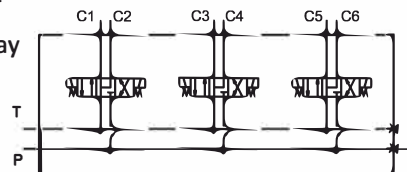
Part Number: 9398A002  
Pilot pressure build up  
50 GPM 5000 PSI  
SAE 20 Ports



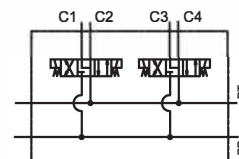
Part Number: C10028  
Stackable 4 way  
3 GPM 3000 PSI  
SAE 8 Ports  
Parker BV06 Mount



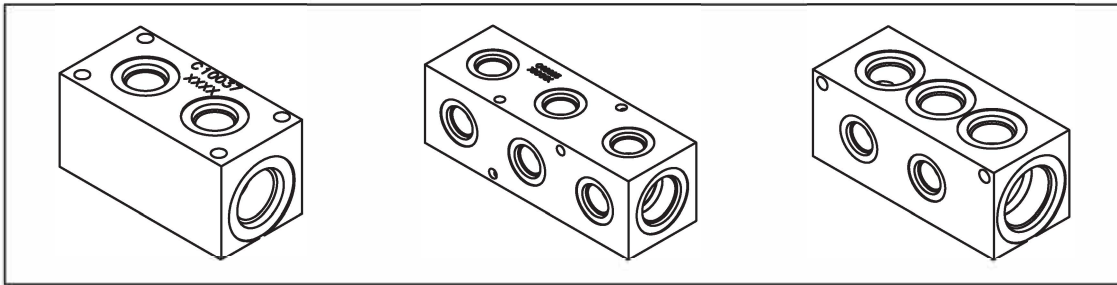
Part Number: C10244  
3 Bank Stackable 4 way  
3 GPM 3000 PSI  
SAE 8 Ports  
Parker BV06 Mount



Part Number: C10654  
2 Bank Stackable D03  
3 GPM 3000 PSI  
SAE 8 Ports

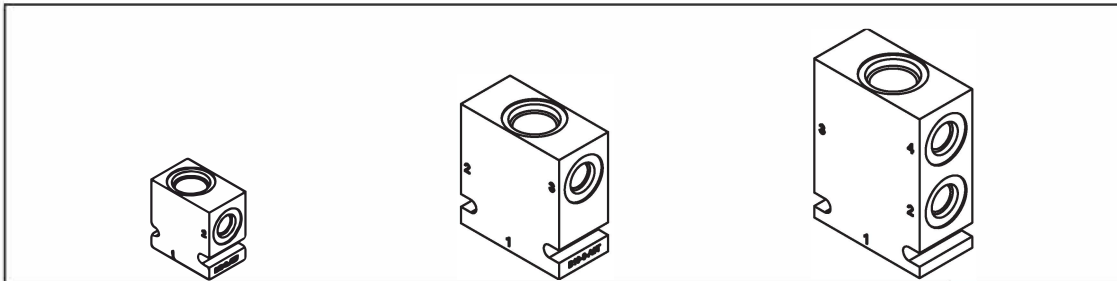


## Return Manifolds



Ports on one side only			Ports on two sides			Ports on three sides		
Part no:	End Port	Side Port	Part no:	End Port	Side Port	Part no:	End Port	Side Port
C11299	SAE 06	4X SAE 04	C10854	SAE 12	4X SAE 06	C10027	SAE 16	
C10037	SAE 12	2X SAE 08	B1183001	SAE 12	3X SAE 08		Side 1	1X SAE 20
C10038	SAE 20	3X SAE 12	B1236001	SAE 16	1X SAE 12		Side 2	1X SAE 12
C10339	SAE 20	3X SAE 12	B1232001	SAE 16	4X SAE 12		Side 3	1X SAE 16
			C10695	SAE 20	3X SAE 12		Side 3	1X SAE 12
			C10696	SAE 20	3X SAE 12			

## Single Cartridge Bodies



2 ported bodies		3 ported bodies		4 ported bodies	
Part No:	Port Size	Part No:	Port Size	Part No:	Port Size
B08-2-A04T	SAE 04	B04-3-A04T	SAE 04	B08-4-A06T	SAE 06
B08-2-A06T	SAE 06	B08-3-A06T	SAE 06	B10-4-A06T	SAE 06
B10-2-A06T	SAE 06	B10-3-A06T	SAE 06	B10-4-A08T	SAE 08
B10-2-A08T	SAE 08	B10-3-A08T	SAE 08		
B16-2-A12T	SAE 12	B16-3-A12T	SAE 12	Flow Divider bodies size 10	
B16-2-A16T	SAE 16	B16-3-A16T	SAE 16	C11074	SAE 06
B20-2-A16T	SAE 16			C12471	SAE 08
B20-2-A20T	SAE 20				

## Accessory Valves

Additional Information

Product Warranty

### **FORCE AMERICA DISTRIBUTING, LLC. PRODUCT WARRANTY**

FORCE America, Inc., warrants to the original purchaser of its products that the products are free of defects in materials and workmanship, when operated under normal conditions and in accordance with accepted FORCE America and/or industry recommended practices. The standard warranty period is 12 months from the date the product is first put into service, but not to exceed 18 months from the date of shipment.

Products must be returned, freight prepaid, to the FORCE America Service Center from which it was shipped, for inspection. A Returned Goods Authorization (RGA) number must be obtained from that service center before shipment is made, and clearly indicated on the shipping package. Product must be received by FORCE America, Inc. within 3 months of the claim as per the requirements of FORCE America's Returned Goods Policy, which is considered to be part of the warranty. FORCE America reserves the right to repair or replace any product found to be under warranty. This warranty policy does not provide for a refund or credit for defective material.

This warranty is null and void if in the judgment of FORCE America, the part had been used in the wrong application, damaged, improperly maintained or repaired, subjected to inappropriate environmental and operating conditions, repaired by a non-FORCE America party without prior authorization from FORCE America, not used in accordance with FORCE America operational and service recommendations, or repaired with other than FORCE America approved parts.

This warranty is in lieu of all other warranties, express or implied, and may be varied only by a separate agreement signed by a duly authorized representative of FORCE America, Inc. FORCE America makes no warranty of merchantability or fitness for a particular purpose. The foregoing states FORCE America's entire and exclusive liability and buyer's exclusive and sole remedy in connection with the sale of the parts hereunder. In no event shall FORCE America be liable for any special, incidental, or consequential damages whatsoever, including loss of use or travel, labor or material costs to remove or reinstall the product. Under no circumstances will FORCE America's liabilities exceed the original repair cost for the products for which liability is claimed.

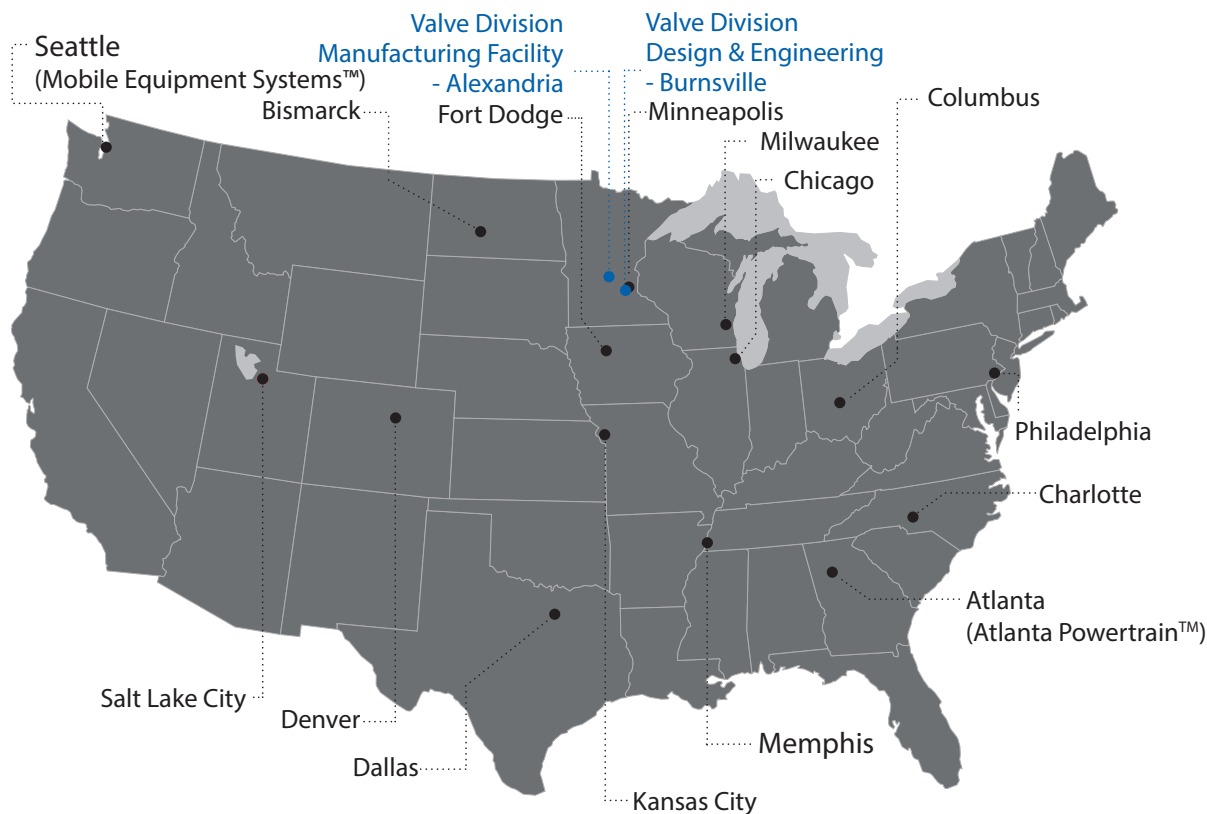
For further information, please consult factory.

# More than a manufacturer. A partner you can depend on.

At FORCE America, we partner with you to move from an idea to a finished product. We understand you have unique needs, tight timelines and need to be budget conscience. That is why we have a number of pre-engineered valves to fit many applications. From pilot operated checks to counterbalance to pump shut off circuits, our accessory valve catalog is a great way to jump start your design. Our experience and capabilities allow us to serve you on-time and on-budget.

We are interested in hearing about your unique needs and putting our knowledge to work for you. Our team is available to guide you through design, engineering, installation, and application questions.

Contact us for more information at [valvesales@forceamerica.com](mailto:valvesales@forceamerica.com) or call 844-825-8399.



1-888-99-FORCE

Sales and Service Centers

© 2020 FORCE America, Inc.

FORCE America Valve Division • <a href="mailto:valvesales@forceamerica.com">valvesales@forceamerica.com</a> • 1-844-825-8399					
4010 Iowa Street		Alexandria, Minnesota 56308		<a href="http://www.forceamerica.com">www.forceamerica.com</a>	
Bismarck, ND	800-624-7568	Denver, CO	888-833-7711	Minneapolis, MN	800-328-2732
Charlotte, NC	800-788-8598	Fort Dodge, IA	800-362-2994	Philadelphia, PA	800-492-6621
Chicago, IL	800-433-5765	Kansas City, MO	800-383-4724	Salt Lake City, UT	877-230-0505
Columbus, OH	888-449-0356	Memphis, TN	888-845-5876		
Dallas, TX	800-893-7225	Milwaukee, WI	800-722-5844		
Atlanta, GA (Atlanta Powertrain™)		888-293-2325		<a href="http://atlantapowertrain.com">atlantapowertrain.com</a>	
Seattle, WA (Mobile Equipment Systems™)		800-354-9028		<a href="http://mobileequip.com">mobileequip.com</a>	