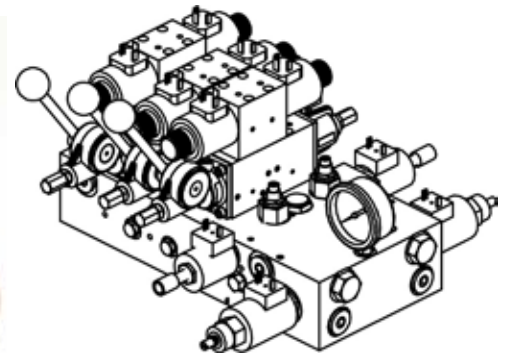
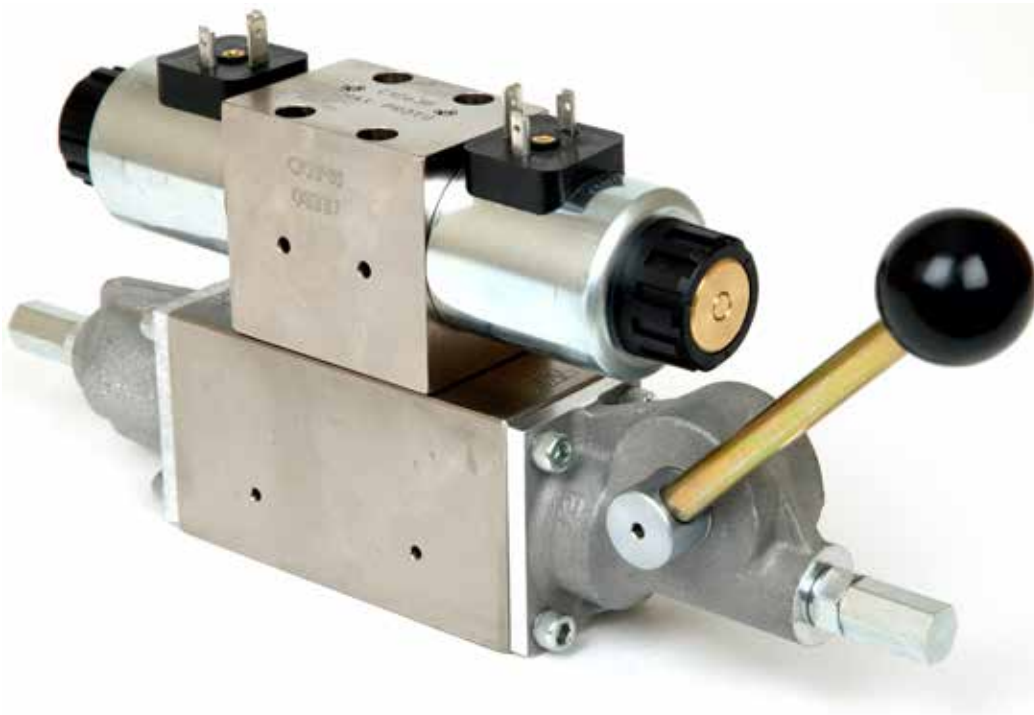


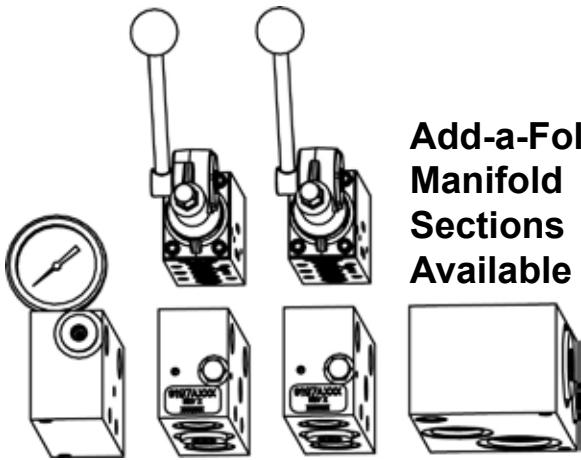
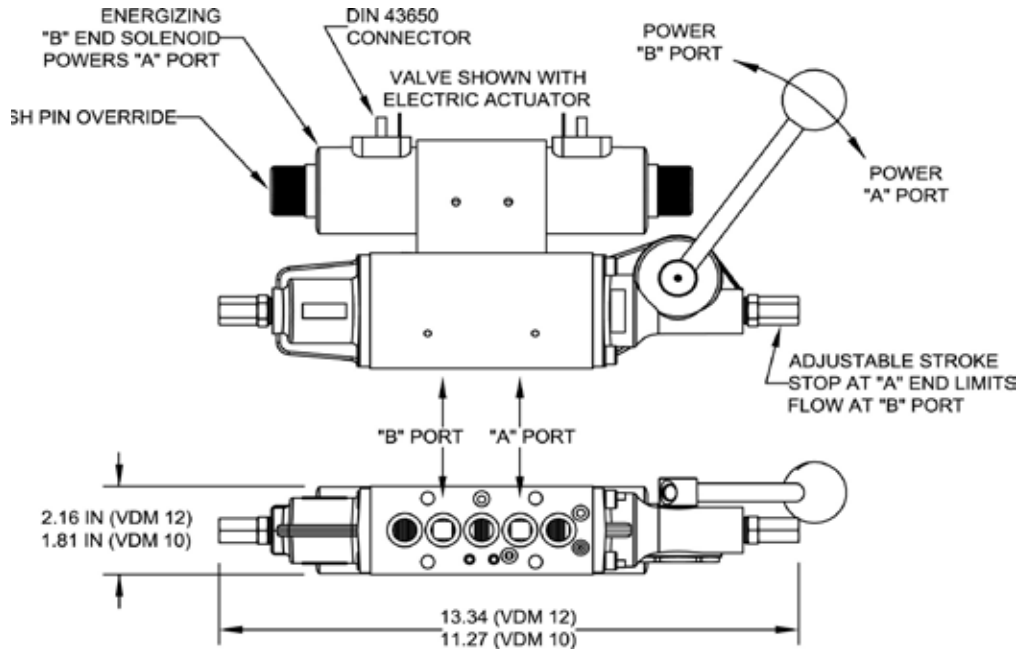
**F E A T U R E S**

VDM control valve is a manifold mounted spool valve designed for mobile applications. Manifold mounting allows a lever valve to be combined with the system manifold block. Work ports and cartridges, required by the spool section, are in the custom manifold block.

- **A mobile control valve integrated with the system manifold block**
  - More integration eliminates plumbing
- **Custom manifold block can be tailored to the spool sections**
  - Customization improves versatility
- **Manifold mounting**
  - Provides easier serviceability since the valve can be removed without breaking into plumbing
- **Precision spool in a honed cast iron bore**
  - Great load holding capability with low work port leakage
- **Plated valve housing**
  - Corrosion resistant, just like the valve cartridges screwed into the manifold
- **Wet spool ends**
  - Positively protects spool ends and eliminates spool seals
  - A dirt resistant rotary seal is used on the manual lever
- **Maximum size, high force electro magnet**
  - Valve powers through dirt and cold oil
- **Proven design**
  - FORCE America has years of experience manufacturing products for application in severe environments
- **Two sizes available**
  - Both valve sizes can work side by side providing appropriate size and control



### Technical Information



### Add-a-Fold Manifold Sections Available

Aluminum manifold sections, produced by FORCE America, are bolted together to form a single manifold. The manifold section provides porting and a load sense shuttle. Inlet sections accommodate both piston pumps and gear pumps.

Some manifold sections do not have a spool section bolted on top. These sections rely on solenoid operated cartridges screwed into them to provide useful function.

### Specification for VDM Spool Section

Flow rating.....	VDM 12: 35 GPM
	VDM 10: 20 GPM
Pressure Rating.....	Inlet port (alum): 3000 PSI
	Tank port: 850 PSI
Spool Leakage P to T.....	VDM 12: 21 cc per min.
	1000 PSI 150 SUS
	VDM 10: 16 cc per min.
Environmental limitations.....	Temp range: -40°F to +180°F
	Viscosity range: 35 to 1750 SUS
	Filtration requirement: ISO 18/14
	Seal compound: Nitrile
	Mounting orientation requirement: None
	Orientation preference: Horizontal spool

### Specification for Electrical Pilot Section

Rated Voltage.....	12 VDC
Coil Resistance.....	7 ohms
Nom Current Rating.....	1.5 amps
Coil Max Power Rating.....	38 watts
Duty Cycle.....	100%
Frequency.....	50-125 Hz PWM
Electrical Connection.....	Din 43650A

# 1-888-99-FORCE

501 East Cliff Road Burnsville, Minnesota 55337 [www.forceamerica.com](http://www.forceamerica.com)

### Sales and Service Centers

Bismarck, ND	800-624-7568	Denver, CO	888-833-7711	Minneapolis, MN	800-328-2732
Charlotte, NC	800-788-8598	Fort Dodge, IA	800-362-2994	Philadelphia, PA	800-492-6621
Chicago, IL	800-433-5765	Kansas City, MO	800-383-4724	Salt Lake City, UT	877-230-0505
Columbus, OH	888-449-0356	Memphis, TN	888-845-5876		
Dallas, TX	800-893-7225	Milwaukee, WI	800-722-5844		

© 2019 FORCE America, Inc.  
FA916-1119-02

Atlanta, GA (Atlanta Powertrain™)	888-293-2325	<a href="http://atlantapowertrain.com">atlantapowertrain.com</a>
Seattle, WA (Mobile Equipment Systems™)	800-354-9028	<a href="http://mobileequip.com">mobileequip.com</a>