

**Heavy Duty Electric Six-Port Selector Valve**

9357A024



**PRODUCT DESCRIPTION**

This high flow solenoid operated 6W2P dual selector valve has two inlet ports and gives you the option to select between two sets of outlet ports.

It is designed for adding after-market equipment functions to most mobile systems including construction, crane, mining, and forestry equipment. It reduces plumbing multiple components with a single integrated manifold design.

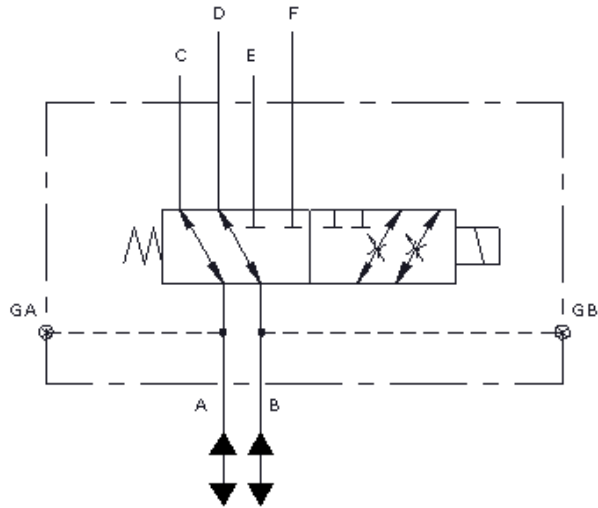
- Adjustable cartridges on one set of outlet ports for metered flow.
- Can be converted to 12 VDC by replacing a single coil. Other coil voltages and connection types available.

**Specifications**

<b>Block Material</b>	Aluminum - 2024
<b>Max Pressure</b>	4000 PSI
<b>Voltage</b>	24VDC
<b>Connection Type</b>	Dual Lead Wires
<b>Rated Flow</b>	80 GPM
<b>Port Type</b>	SAE 20
<b>Gauge Port</b>	SAE 04
<b>Mount Style</b>	Threaded Holes
<b>Mount Style</b>	Thru-Holes

**Heavy Duty Electric Six-Port Selector Valve**

9357A024



SCHEMATIC (SIMPLIFIED)

FORCE America Valve Division • [valvesales@forceamerica.com](mailto:valvesales@forceamerica.com) • 1-844-825-8399

**1-888-99-FORCE**

4010 Iowa Street

Alexandria, Minnesota 56308

[www.forceamerica.com](http://www.forceamerica.com)

**Sales and Service Centers**

© 2020 FORCE America, Inc.

4/23/2020

Bismarck, ND	800-624-7568	Denver, CO	888-833-7711	Minneapolis, MN	800-328-2732
Charlotte, NC	800-788-8598	Fort Dodge, IA	800-362-2994	Philadelphia, PA	800-492-6621
Chicago, IL	800-433-5765	Kansas City, MO	800-383-4724	Salt Lake City, UT	877-230-0505
Columbus, OH	888-449-0356	Memphis, TN	888-845-5876		
Dallas, TX	800-893-7225	Milwaukee, WI	800-722-5844		
Atlanta, GA (Atlanta Powertrain™)			888-293-2325	<a href="http://atlantapowertrain.com">atlantapowertrain.com</a>	
Seattle, WA (Mobile Equipment Systems™)			800-354-9028	<a href="http://mobileequip.com">mobileequip.com</a>	