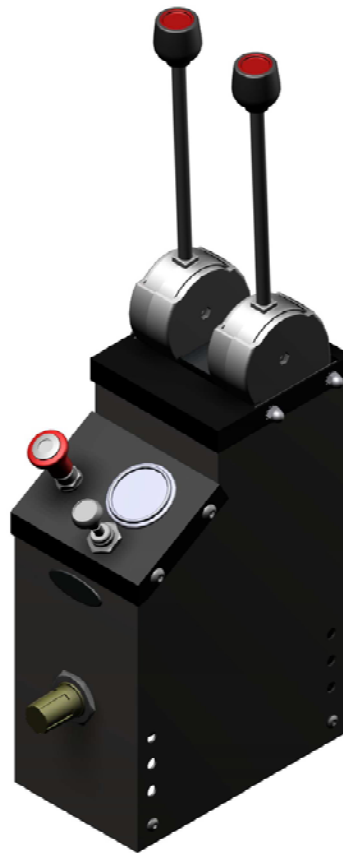




Cab Control System

Sales Resource Manual



Product Warranty

FORCE America Inc. warrants to the original purchaser of its products that the products are free of defects in materials and workmanship, when operated under normal conditions and in accordance with accepted FORCE America and/or industry recommended practices. The standard warranty period is 12 months from the date the product is first put into service but not to exceed 18 months from the date of shipment.

Products must be returned, freight prepaid, to the FORCE America Service Center from which it was shipped, for inspection. A Returned Goods Authorization (RGA) number must be obtained from that service center before shipment is made, and clearly indicated on the shipping package. Product must be received by FORCE America Inc. within 3 months of the claim as per the requirements of FORCE America's Returned Goods Policy, which is considered to be part of the warranty. FORCE America reserves the right to repair or replace any product found to be under warranty. This warranty policy does not provide for a refund or credit for defective material.

This warranty is null and void if in the judgment of FORCE America, the part had been used in the wrong application, damaged, improperly maintained or repaired, subjected to inappropriate environmental and operating conditions, repaired by a non-FORCE America party without prior authorization from FORCE America, not used in accordance with FORCE America operational and service recommendations, or repaired with other than FORCE America approved parts.

This warranty is in lieu of all other warranties, express or implied and may be varied only by a separate agreement signed by a duly authorized representative of FORCE America Inc. FORCE America makes no warranty of merchantability or fitness for a particular purpose. The foregoing states FORCE America's entire and exclusive liability and buyer's exclusive and sole remedy in connection with the sale of the parts hereunder. In no event shall FORCE America be liable for any special, incidental, or consequential damages whatsoever including loss of use or travel, labor or material costs to remove or reinstall the product. Under no circumstances will FORCE America's liabilities exceed the original repair cost for the products for which liability claimed.

For further information please consult factory.



Table of Contents

1) Introduction - Overview

Sec 1

2) Model Code Breakdown

Sec 2

3) Tower Options

Sec 3

4) RVC Control Options

Sec 4

5) Top Bay Options

Sec 5

6) Front Bay Options

Sec 6

7) Component Specifications

Sec 7

8) Component Parts List

Sec 8



InControl is a modular in cab control solution that is designed to support cable, air, electric and hydraulic controls.

InControl is designed with two types of tower stands that are offered in three different widths. They are 3 , 5 and 7 cable sticks wide with a standard top bay or an optional front bay.

The towers can be ordered with or without adjustable bases and include a removable rear cover. The separate tower-base and rear cover provide a new level of access and convenience during installation and service not available until now.

InControl towers are designed to accept cable operated, remote valve controls (RVC). The RVC controls can be mounted in the top bay or if desired, in the optional front bay. Typically controlling hydraulic valves this allows for a wide range of cable control options.

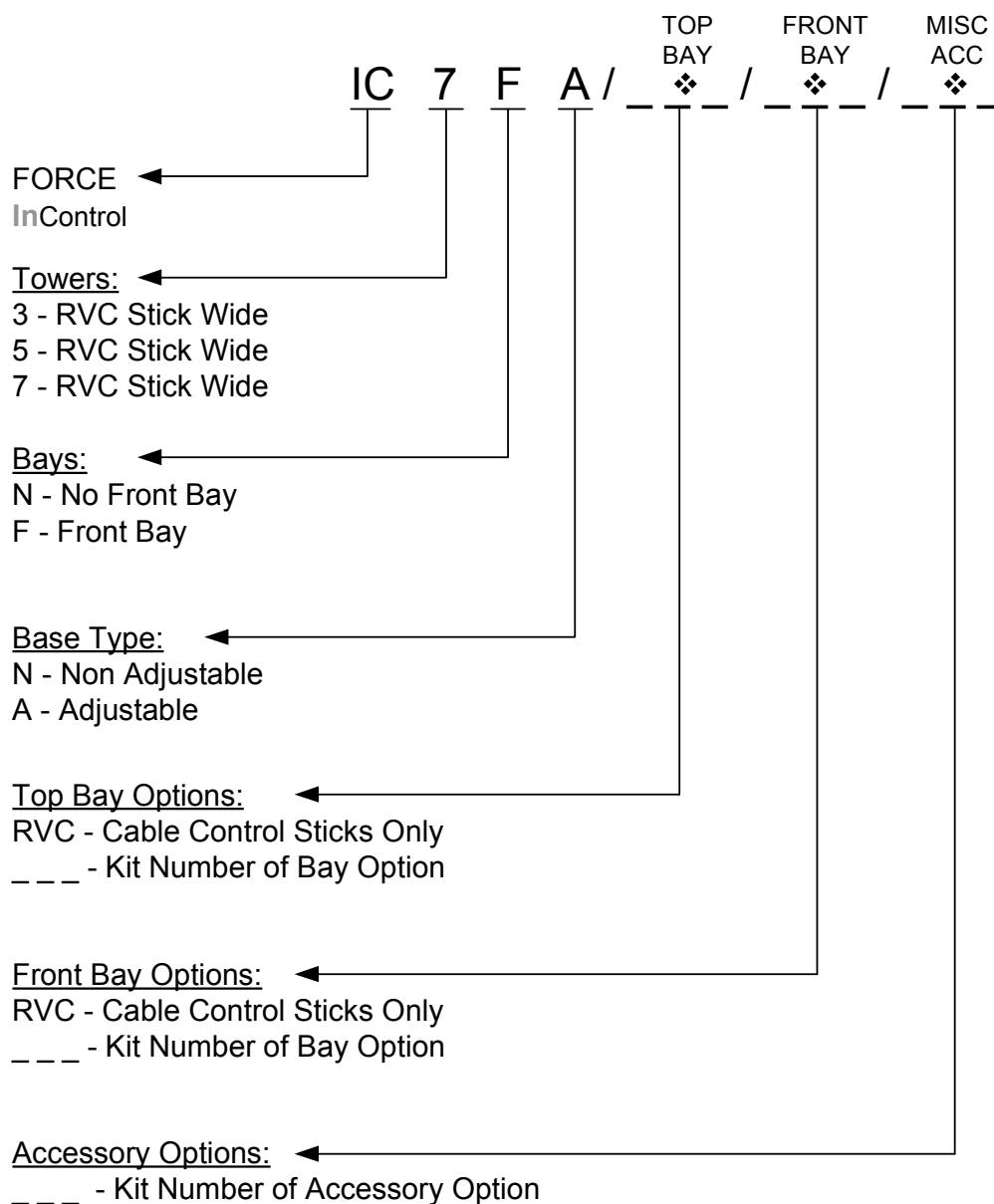
The RVC bay's will accept component mounting plates. The mounting plates will support a large variety of control options. They will include but are not limited to hoist/ pto controls, tailgate controls, tag axle controls, hydraulic and electric spreader controls, tarp controls and auxiliary electric controls. The mounting plates are available in preconfigured assemblies for drop in convenience, but they can be deigned to meet your unique custom application.



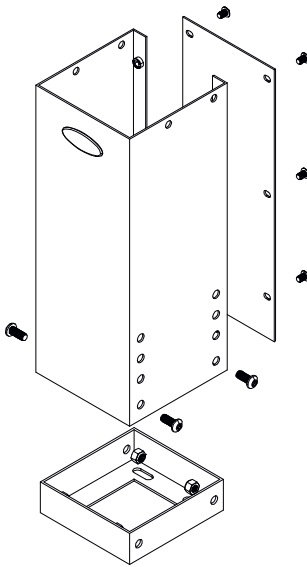


Model Code Breakdown

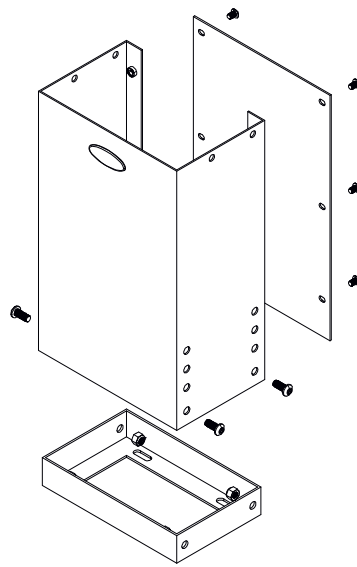
Sec 2



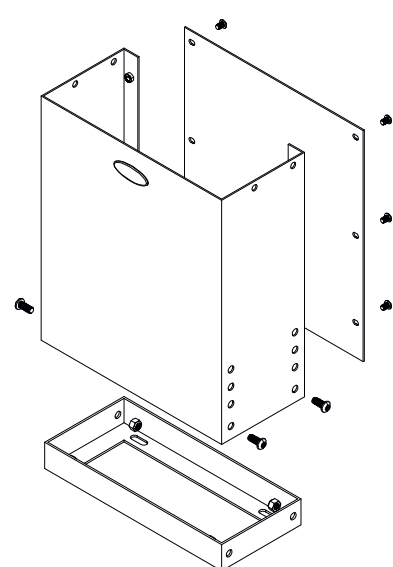
❖ Refer to the appropriate section in the manual for kit number options. Leave section blank if not required.



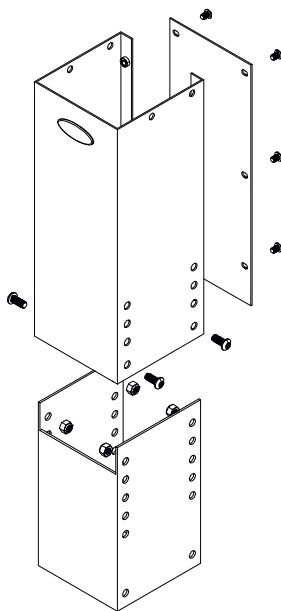
IC3NN



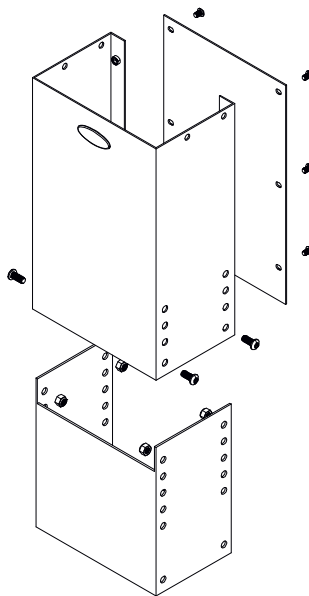
IC5NN



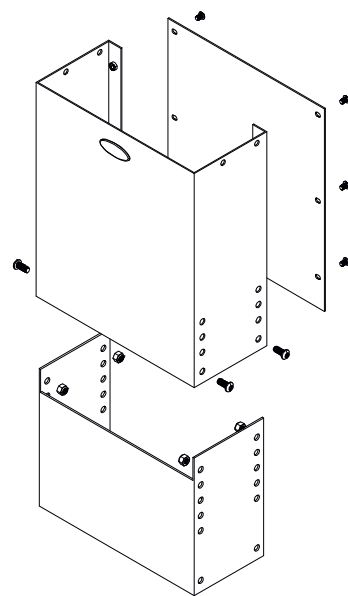
IC7NN



IC3NA

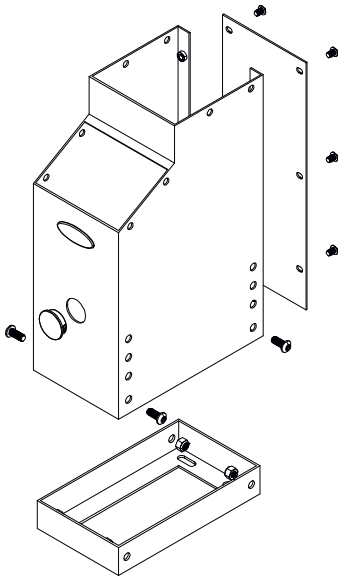


IC5NA

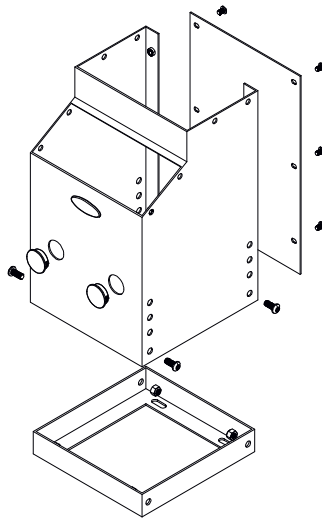


IC7NA

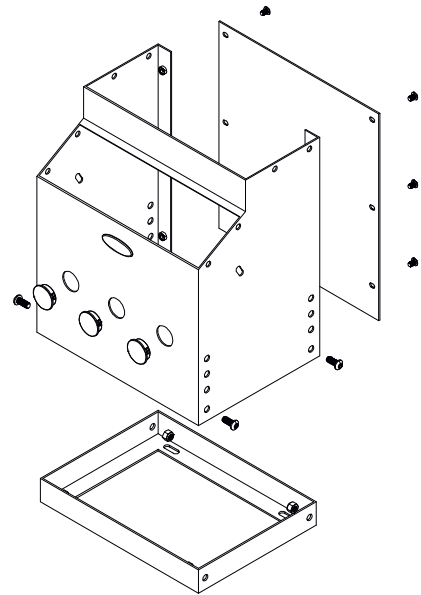
Kit numbers shown include all hardware pictured.
Floor mounting hardware is not included.



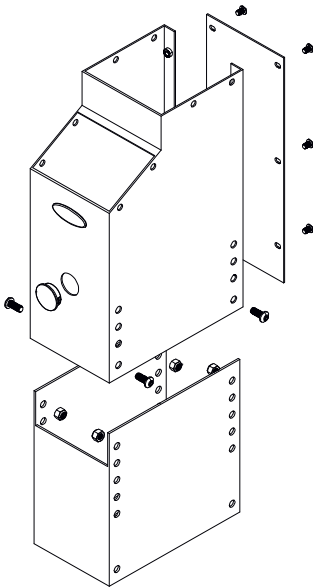
IC3FN



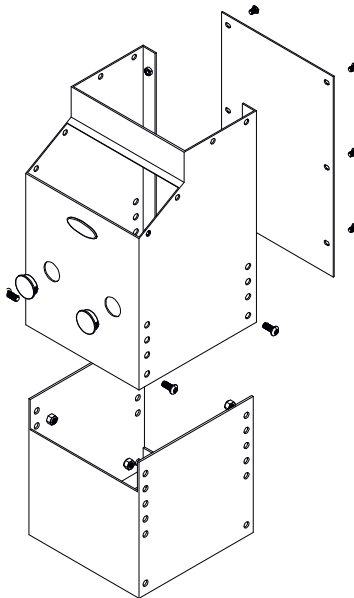
IC5FN



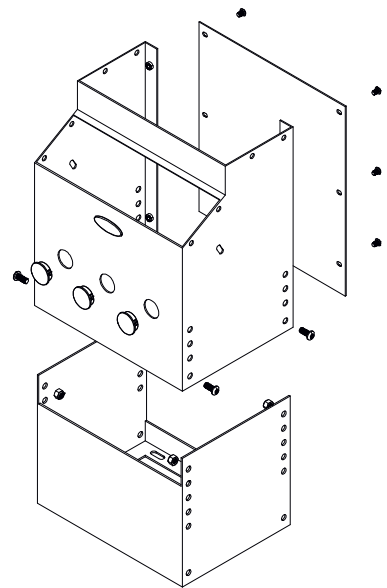
IC7FN



IC3FA



IC5FA

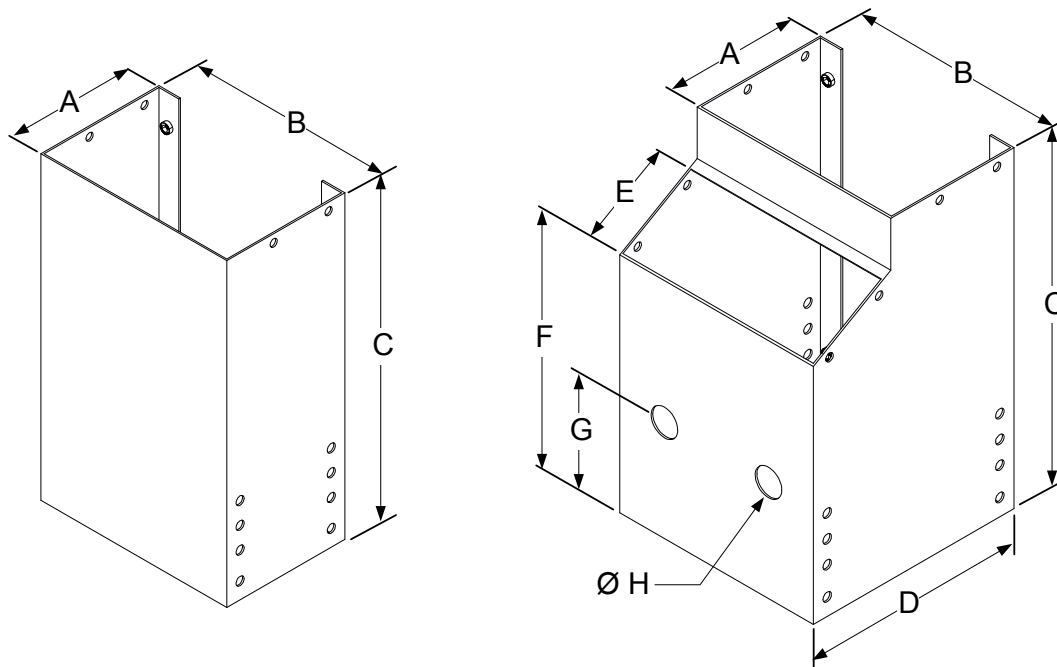


IC7FA

Kit numbers shown include all hardware pictured.
Floor mounting hardware is not included.



Tower Dimensions

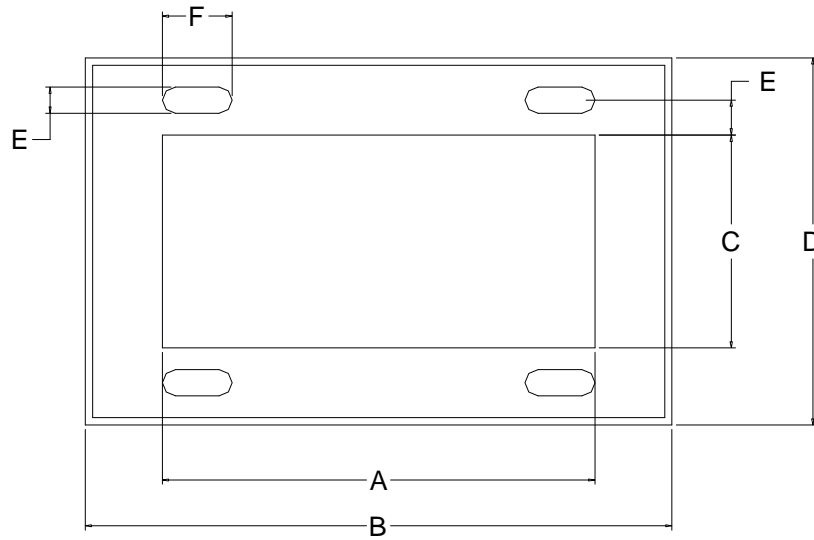


Sec 3

	A	B	C	D	E	F	G	H
IC3NATOWER	5.50	5.28	14.00	-	-	-	-	-
IC3FATOWER	5.50	5.28	14.00	8.96	3.51	10.00	4.50	1.188
IC5NATOWER	5.50	8.65	14.00	-	-	-	-	-
IC5FATOWER	5.50	8.65	14.00	8.96	3.51	10.00	4.50	1.188
IC7NATOWER	5.50	11.97	14.00	-	-	-	-	-
IC7FATOWER	5.50	11.97	14.00	8.96	3.51	10.00	4.50	1.188



Mounting Plate Dimensions



Sec 3

	A	B	C	D	E	F
IC3NNBASE IC3NABASE	2.83	5.04	3.05	5.26	.375	1.00
IC3FNBASE IC3FABASE	2.83	5.04	6.51	8.72	.375	1.00
IC5NNBASE IC5NABASE	6.19	8.40	3.05	5.26	.375	1.00
IC5FNBASE IC5FABASE	6.19	8.40	6.51	8.72	.375	1.00
IC7NNBASE IC7NABASE	9.52	11.73	3.05	5.26	.375	1.00
IC7FNBASE IC7FABASE	9.52	11.73	6.51	8.72	.375	1.00



RVC 3 Stick Options

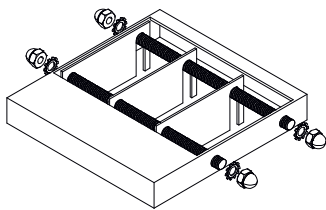
Sec 4



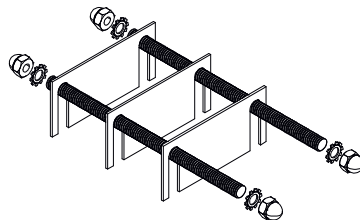
IC3FA Tower with 3 sticks
in Top Bay and 3 sticks in
Front Bay



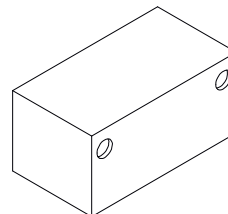
IC3NA Tower with 3 sticks
in Top Bay



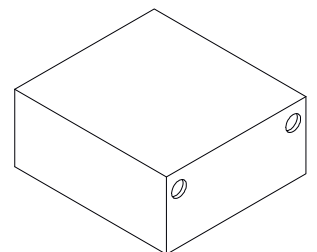
IC3TK-RVC
Stick Mounting Kit for
Top Bay



IC3FK-RVC
Stick Mounting Kit for
Front Bay



ICSPACER1
Single RVC
Spacer



ICSPACER2
Double RVC
Spacer

NOTE: Shims shown in RVC mounting kits are included and to be used as needed.



RVC 5 Stick Options

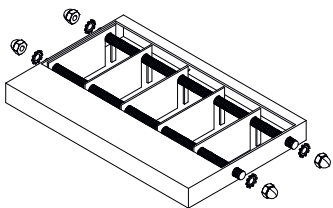
Sec 4



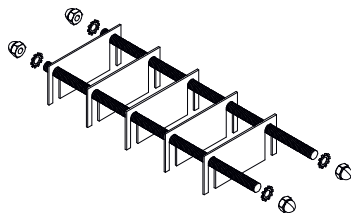
IC5FA Tower with 5 sticks
in Top Bay and 5 sticks in
Front Bay



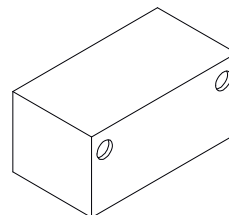
IC5NA Tower with 5 sticks
in Top Bay



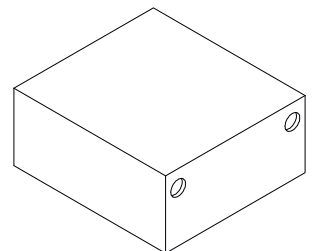
IC5TK-RVC
Stick Mounting Kit for
Top Bay



IC5FK-RVC
Stick Mounting Kit for
Front Bay



ICSPACER1
Single RVC
Spacer



ICSPACER2
Double RVC
Spacer

NOTE: Shims shown in RVC mounting kits are included and to be used as needed.



RVC 7 Stick Options

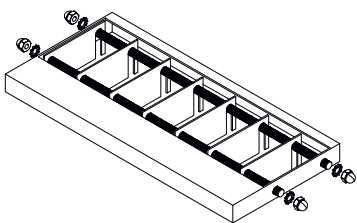
Sec 4



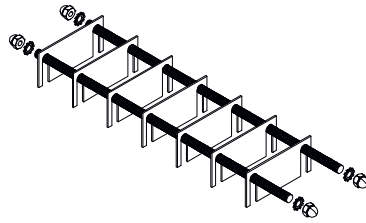
IC7FA Tower with 7 sticks
in Top Bay and 7 sticks in
Front Bay



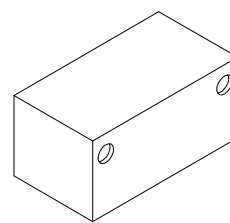
IC3NA Tower with 7 sticks
in Top Bay



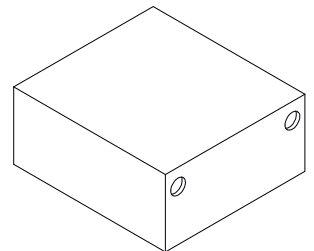
IC7TK-RVC
Stick Mounting Kit for
Top Bay



IC7FK-RVC
Stick Mounting Kit for
Front Bay



ICSPACER1
Single RVC
Spacer

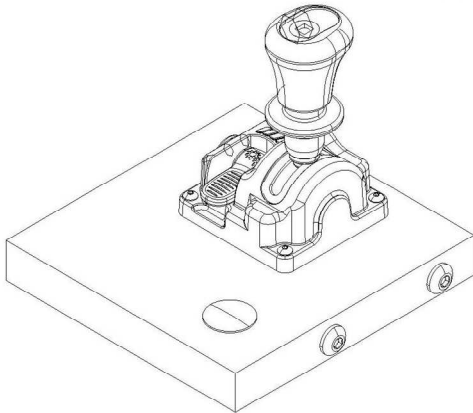


ICSPACER2
Double RVC
Spacer

NOTE: Shims shown in RVC mounting kits are included and to be used as needed.

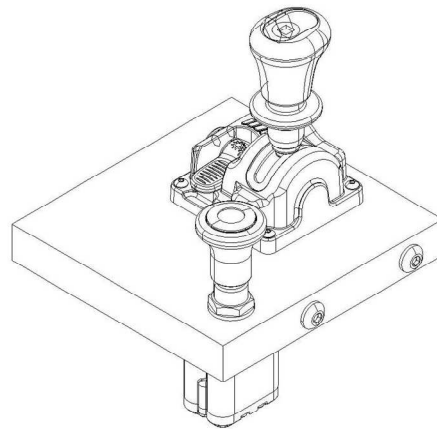


IC3 Top Bay Cover Assemblies



IC3TK-001

Includes 100.001.71003 Hoist/PTO air control



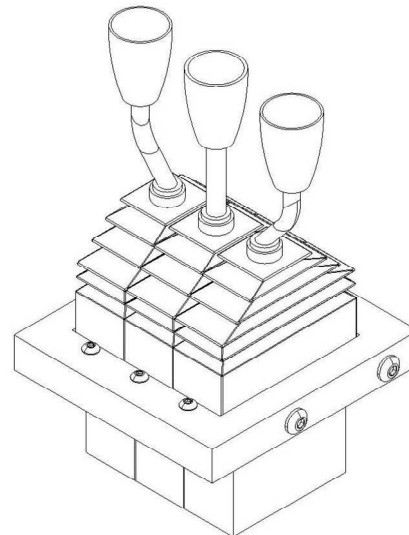
IC3TK-002

Includes 100.001.71003 Hoist/PTO air control and ACV-R25 tailgate air control valve



IC3TK-003

Includes 100.001.71003 Hoist/PTO air control, 75712-04 rotary electric tarp control, 30 amp breaker and ACV-R25 tailgate air control valve
(Shown installed in IC3NA tower)



IC3TK-004

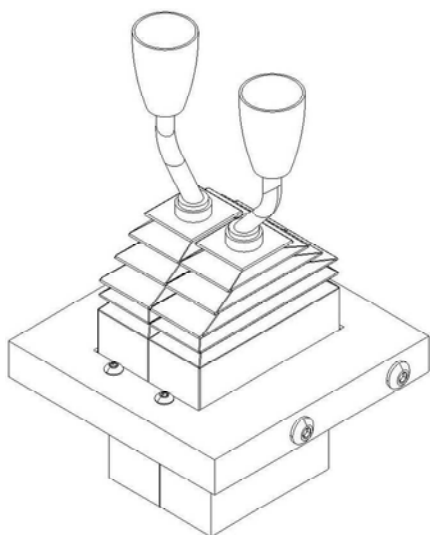
Three stick air control cover
(Sticks not included)
See Section 7 for stick information

Kit includes top plate and installation hardware. Components will be included where noted.

Sec 5

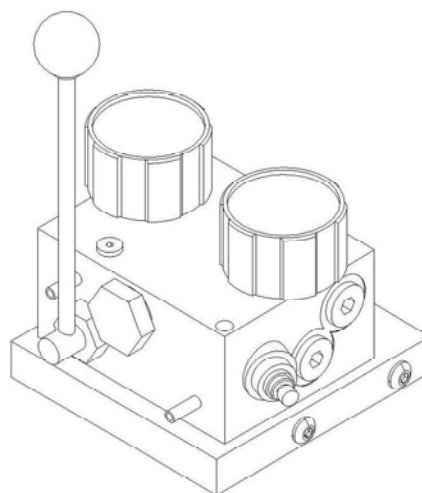


IC3 Top Bay Cover Assemblies



IC3TK-005

Two stick air control cover
(Sticks not included)
See Component Section to
select sticks



IC3TK-006

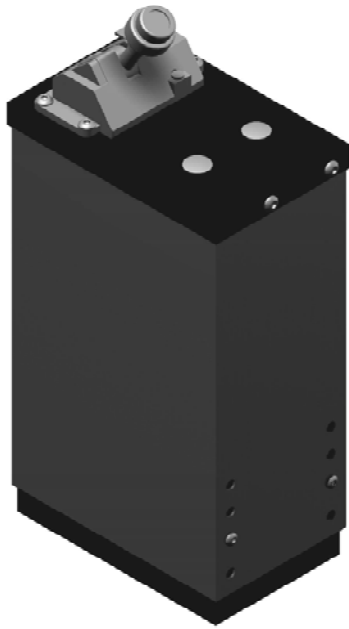
QDB Manual spreader
control valve cover
(Valve not included)

Sec 5

Kit includes top plate and
installation hardware. Components
will be included where noted.

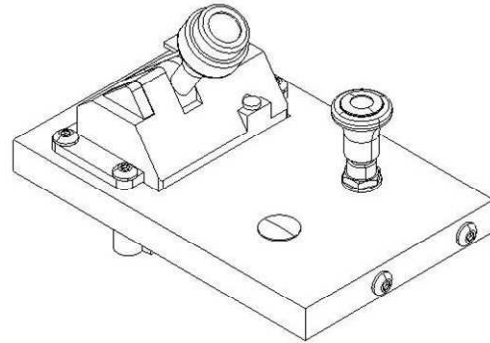


IC5 Top Bay Cover Assemblies



IC5TK-007

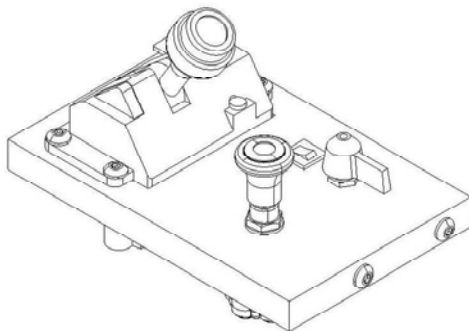
Includes FA295 Hoist/PTO air control
(Shown installed in IC5NA tower)



IC5TK-006

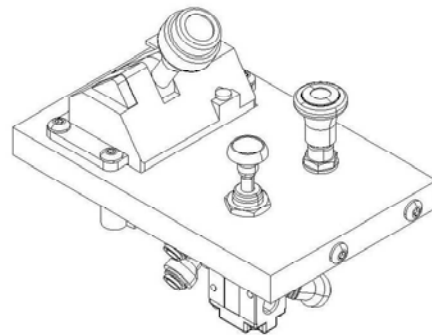
Includes FA295 Hoist/PTO air control and ACV-R25 tailgate air control valve

Sec 5



IC5TK-005

Includes FA295 Hoist/PTO air control, 75712-04 rotary electric tarp control, 30 amp breaker and ACV-R25 tailgate air control valve



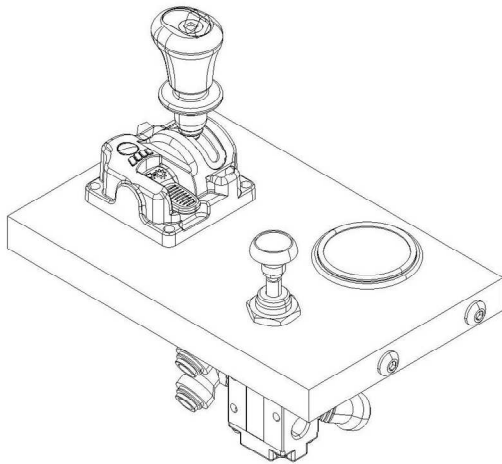
IC5TK-004

Includes FA295 Hoist/PTO air control VL-5 air tarp control valve and ACV-R25 tailgate air control valve

Kit includes top plate and installation hardware. Components will be included where noted

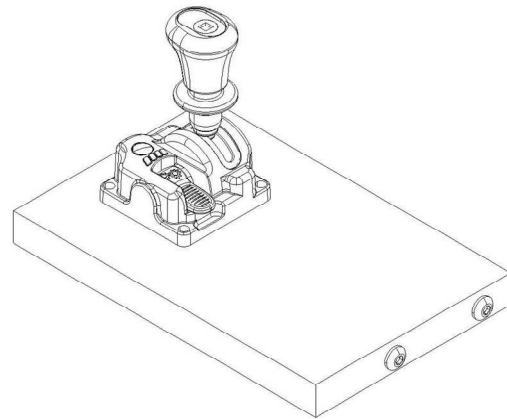


IC5 Top Bay Cover Assemblies



IC5TK-001

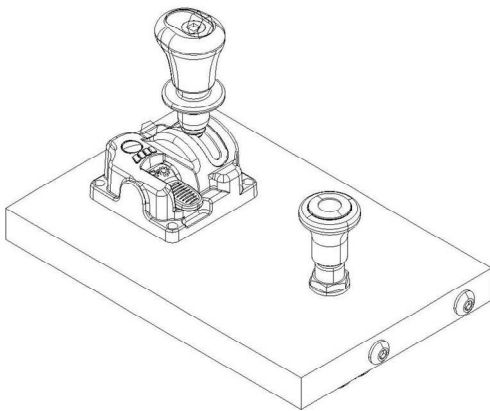
Includes 100.001.71003 Hoist/PTO air control, VL-5 Tag axle control valve, and 0-150 psi backlit air pressure gauge



IC5TK-002

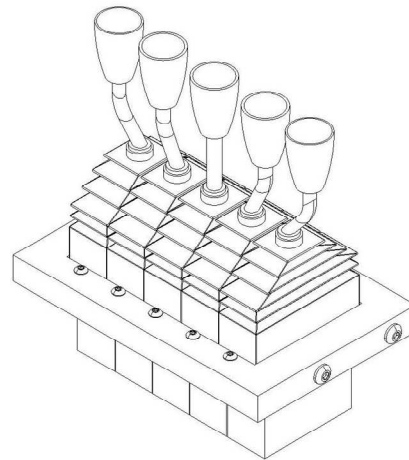
Includes 100.001.71003 Hoist/PTO air control

Sec 5



IC5TK-003

Includes 100.001.71003 Hoist/PTO air control and ACV-R25 tailgate air control valve



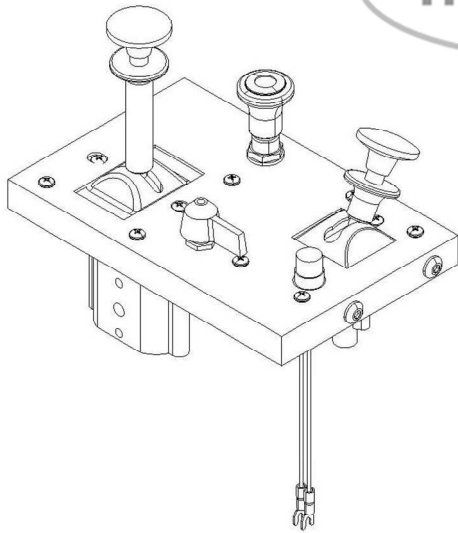
IC5TK-008

Five stick air control cover
(Sticks not included)
See Section 7 for stick information

Kit includes top plate and installation hardware. Components will be included where noted.

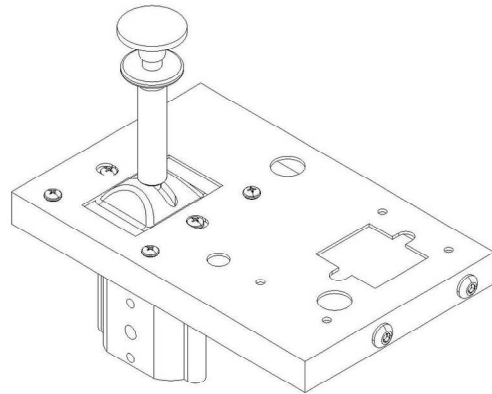


IC5 Top Bay Cover Assemblies



IC5TK-011

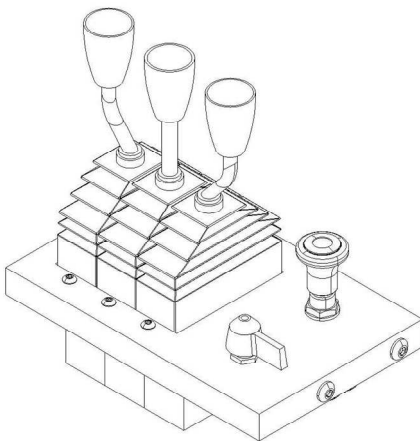
Includes WM787F feathering hoist control, air tailgate control valve, and rotary electric tarp control.



IC5TK-012

Includes WM787F feathering hoist control

Sec 5



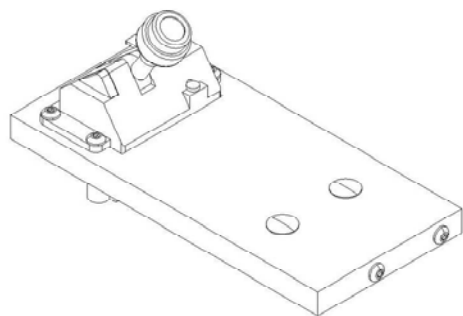
IC5TK-009

Includes ACV-R25 air tailgate control valve and 75712-04 rotary electric tarp control.

Kit includes front plate and installation hardware. Components will be included where noted.

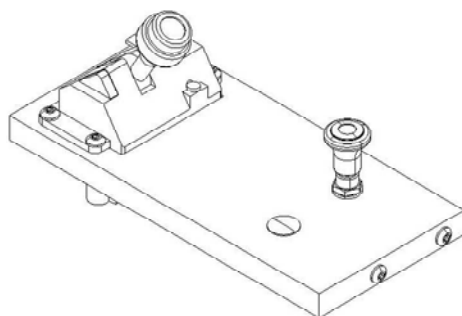


IC7 Top Bay Cover Assemblies



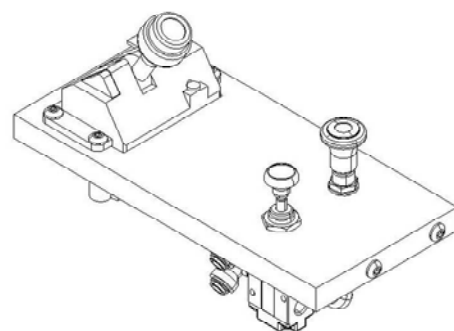
IC7TK-004

Includes FA295 Hoist/PTO air control



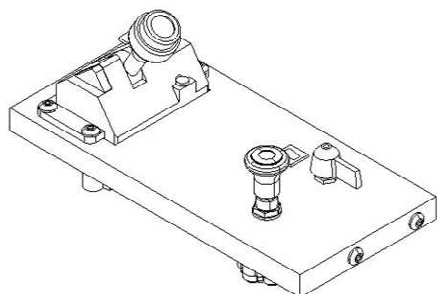
IC7TK-005

Includes FA295 Hoist/PTO air control and ACV-R25 tailgate air control valve



IC7TK-006

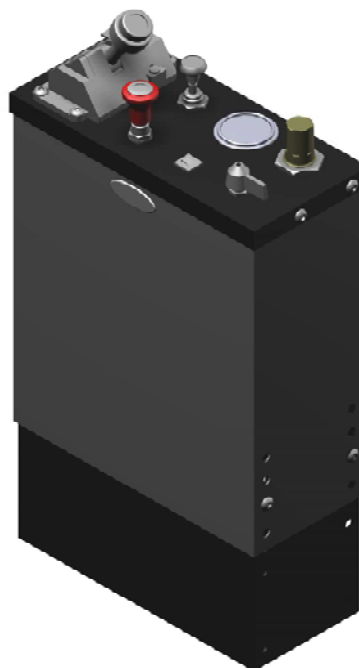
Includes FA295 Hoist/PTO air control VL-5, air tarp control valve, and ACV-R25 tailgate air control valve



IC7TK-007

Includes FA295 Hoist/PTO air control rotary electric tarp control with 30 amp breaker and ACV-R25 tailgate air control valve

Sec 5



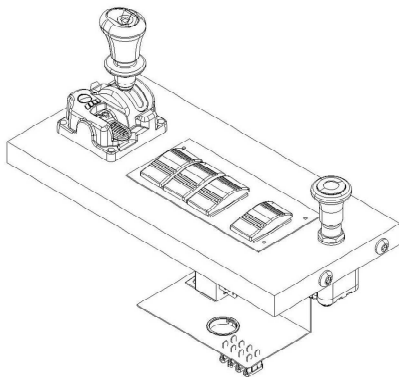
IC7TK-008

Includes FA295 Hoist/PTO air control, rotary electric tarp control with 30 amp breaker, tailgate air control valve, and single tag axle control that includes valve, gauge and regulator (Shown installed in a IC7NA tower)

Kit includes top plate and installation hardware. Components will be included where noted.

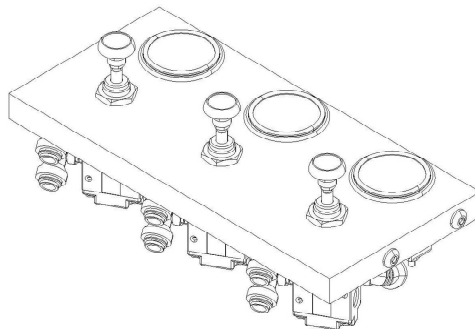


IC7 Top Bay Cover Assemblies



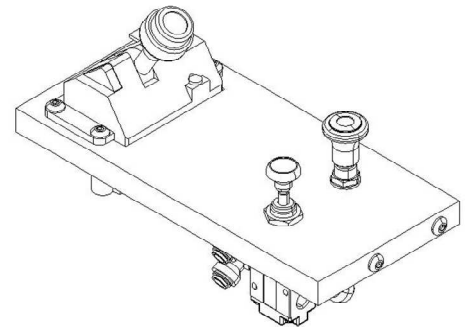
IC7TK-001

Includes 100.001.71003 Hoist/PTO air control, ACV-R25 tailgate air control valve, and aux electric switch control panel with tarp control



IC7TK-002

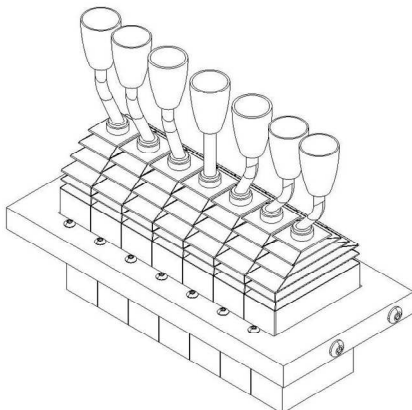
Includes three tag axle controls and panel lights



IC7TK-006

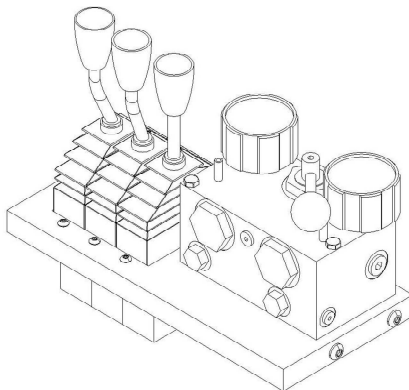
Includes FA295 Hoist/PTO air control, VL-5 air tarp control valve, and ACV-R25 tailgate air control valve

Sec 5



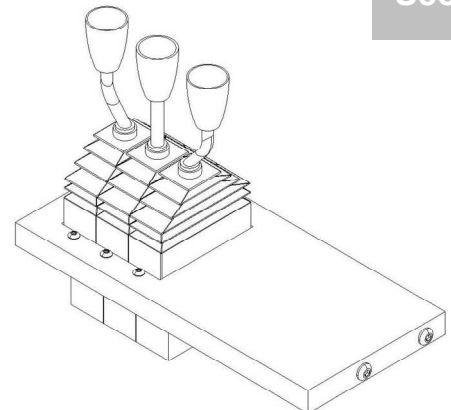
IC7TK-009

7 – Stick air control cover plate (Sticks not included)
See section 7 for stick information



IC7TK-010

3 – Air stick control plate with QDL manual dual knob loadsense, spreader valve. (Sticks and valve not included)
Refer to Section 7 for stick data



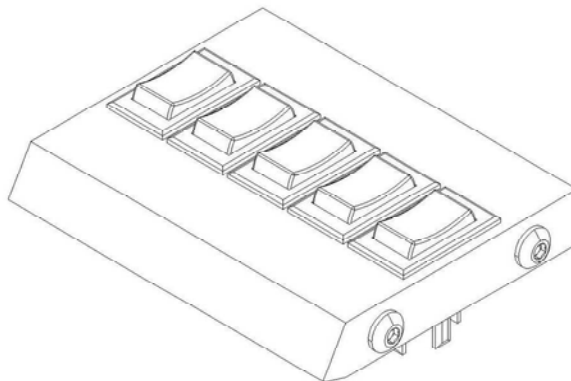
IC7TK-012

3 – Air stick control plate (Sticks not included)
Refer to Section 7 for stick data

Kit includes top plate and installation hardware. Components will be included where noted.



IC3 Front Bay Cover Assemblies



IC3FK-002

Includes 5 switch openings for
accessory electric rocker switches
(rocker switches not included)



IC3FK-001

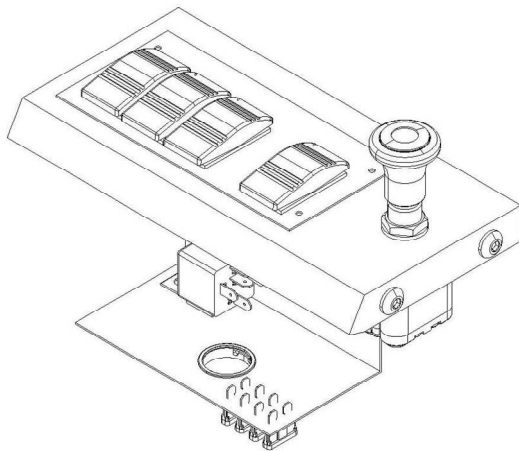
Single Tag Axle control that includes:
air pressure gauge (lighted), tailgate
control, air regulator, panel light and
tag axle control valve. (Shown
installed in IC3FA tower)

Kit includes front plate and
installation hardware. Components
will be included where noted.

Sec 6

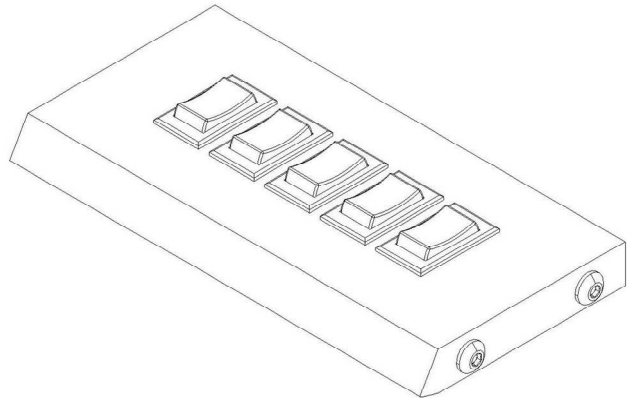


IC5 Front Bay Cover Assemblies



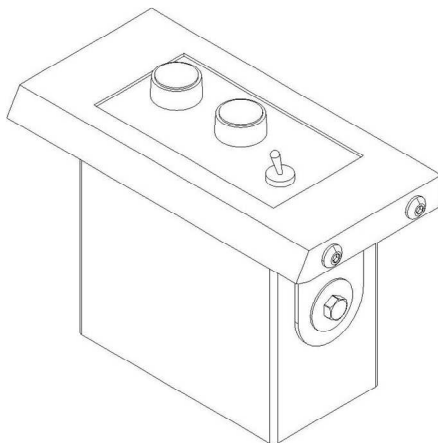
IC5FK-001

Includes electric Tarp control module with 3 accessory electric switches and air tail gate control valve



IC5FK-002

Includes 5 switch openings for accessory electric rocker switches



IC5FK-003

Includes mounting bracket to install Force America model 1100 and 2100 electric spreader control

Kit includes front plate and installation hardware. Components will be included where noted.



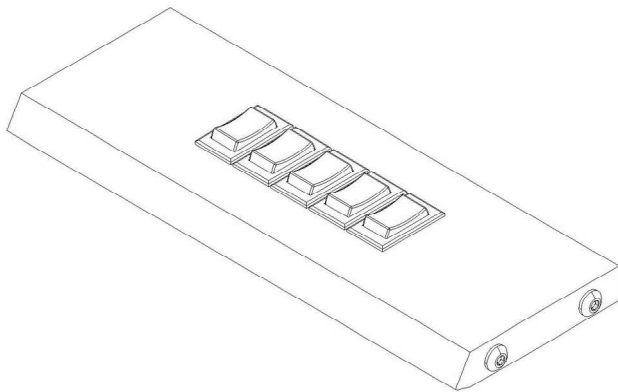
IC5FK-004

Includes 2 – Tag Axle controls which include pressure gauges with back lighting, axle control air valves, air pressure regulators and panel lights (Shown installed in IC5FA tower)

Sec 6

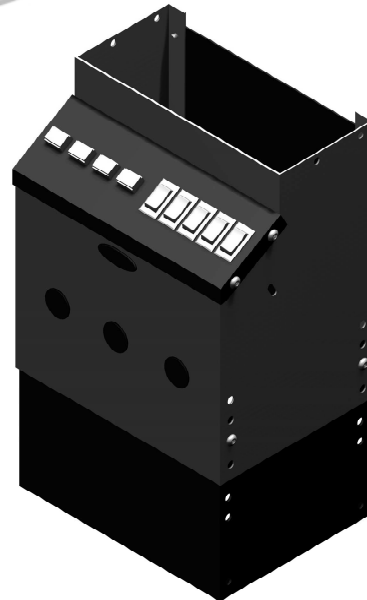


IC7 Front Bay Cover Assemblies



IC7FK-005

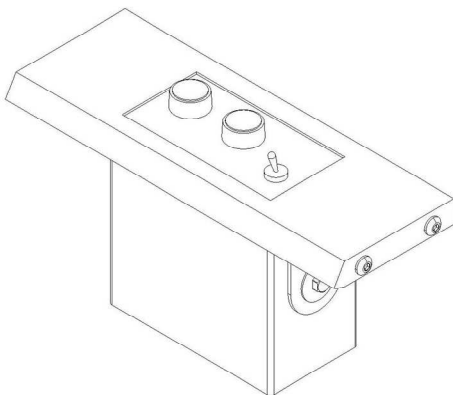
Includes 5 Switch Openings for
Accessory Electric Rocker
Switches (Rocker Switch not
included – Refer to Section 7)



IC7FK-006

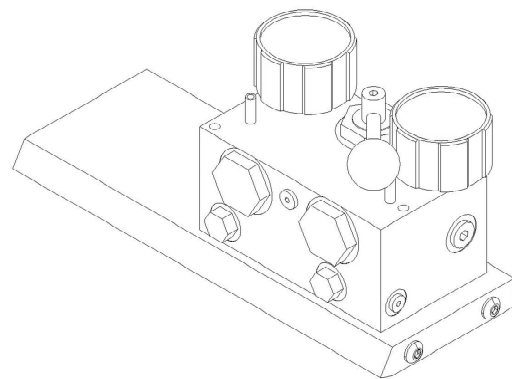
Includes 5 Switch Openings for
Accessory Electric Rocker
Switches and 4 System Condition
Indicators (No Switch or Indicator
supplied - Refer to Section 7)

Sec 6



IC7FK-007

Includes Mounting Bracket to Install Force America
Model SSC1100 and SSC2100 Electric Spreader
Controls



IC7FK-008

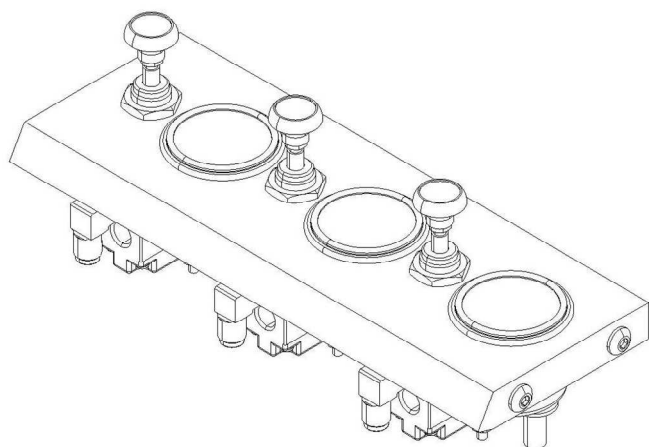
Includes Mounting Bracket to Install
Parker QDL Manual Load Sense
Spreader Control

Note: The IC7FA and IC7FN tower assemblies
include bolt slots to allow mounting in the Front Bay
the following FORCE America Electric Spreader
Controls: SSC1150, SSC1500, SSC1600,
SSC2150, SSC2500, SSC2600 and SSC5100

Kit includes front plate and
installation hardware. Components
will be included where noted.

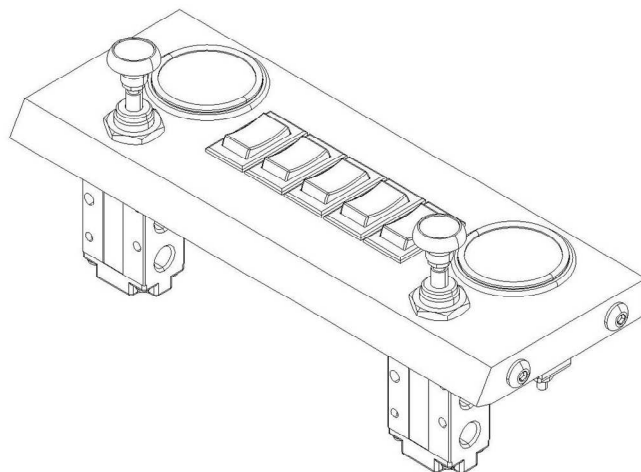


IC7 Front Bay Cover Assemblies



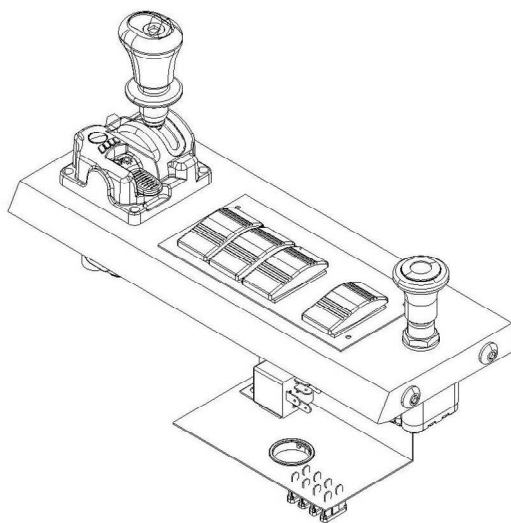
IC7FK-002

Includes three Tag Axle controls containing lighted air pressure gauges, axle control valves, and air pressure regulators with panel lights



IC7FK-003

Includes two Tag Axle controls, panel lights, and 5 switch openings for accessory electric rocker switches (Switches not included – refer to section 7)



IC7FK-004

Includes 100.001.71003 Hoist/PTO air control, ACV-R25 Tailgate air control, and electric relay operated Tarp control module with 3 auxiliary rocker switch functions

Kit includes front plate and installation hardware. Components will be included where noted.

Sec 6



RVC Cable Control Components

RVC Control Levers	
Part Number	Description
206301-F-P	Single Axis Stick
308421-F-P	Dual Axis Stick



RVC Valve Control Cables	
Part Number	Description
FA2845-036P	3' Valve Control Cable
FA2845-048P	4' Valve Control Cable
FA2845-060P	5' Valve Control Cable
FA2845-072P	6' Valve Control Cable
FA2845-084P	7' Valve Control Cable
FA2845-096P	8' Valve Control Cable
FA2845-108P	9' Valve Control Cable
FA2845-120P	10' Valve Control Cable
FA2845-132P	11' Valve Control Cable
FA2845-144P	12' Valve Control Cable

RVC Valve Control Cable Ends



Valve Control output connects to valve mounting kit (see next page)

RVC Bulkhead Control Cables	
Part Number	Description
FA2665-036P	3' Bulkhead Control Cable
FA2665-048P	4' Bulkhead Control Cable
FA2665-060P	5' Bulkhead Control Cable
FA2665-072P	6' Bulkhead Control Cable
FA2665-084P	7' Bulkhead Control Cable
FA2665-096P	8' Bulkhead Control Cable
FA2665-108P	9' Bulkhead Control Cable
FA2665-120P	10' Bulkhead Control Cable
FA2665-132P	11' Bulkhead Control Cable
FA2665-144P	12' Bulkhead Control Cable
FA2665-156P	13' Bulkhead Control Cable
FA2665-168P	14' Bulkhead Control Cable
FA2665-180P	15' Bulkhead Control Cable

Sec 7



RVC Bulkhead Control Cable Ends



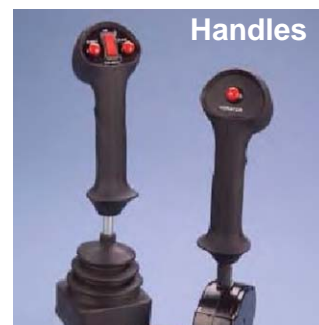
Bulkhead Control output: 1/4" - 28 UNF rod end with 1" travel



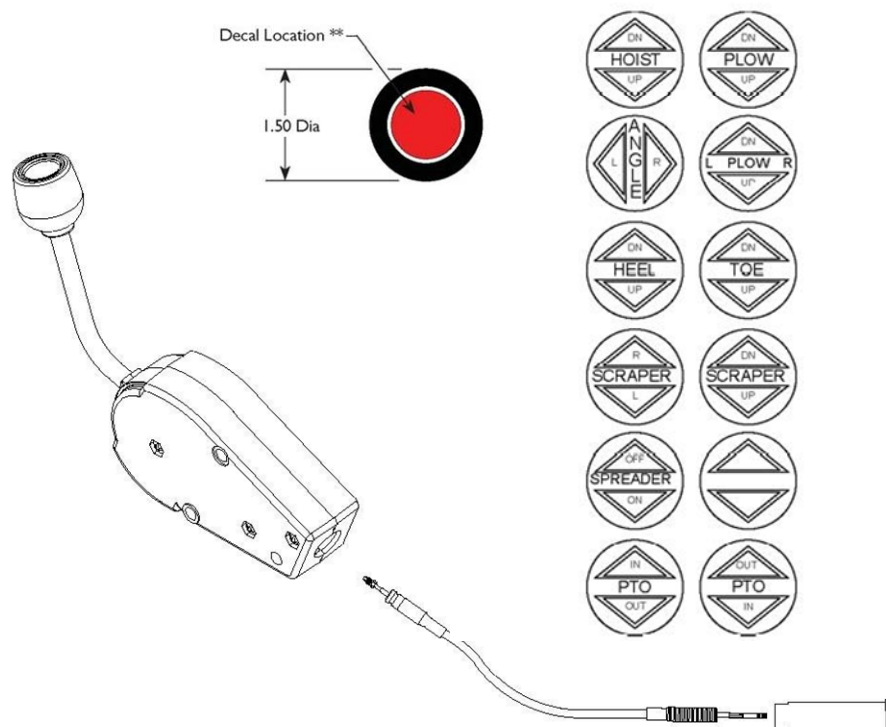
RVC Cable Control Components



RVC Control Levers	
Part Number	Description
FA2ABP	Dual Axis Handle W/ Blast and Pass Buttons
FA1ACL	Single Axis Short Stick Center Locking
FA2ARCKR	Dual Axis Handle W/ On-Off Switch
FA1ACL-LEFT	Single Axis Stick Center Locking Bent Left
FA1ACL-RIGHT	Single Axis Stick Center Locking Bent RT
FA1ACLPB	Single Axis Handle Center Locking W/ Vib Button
08-5904-03	Single Axis Short Bent Stick Center Locking
08-5907-01	Single Axis Short Stick Center Locking Black
08-5907-01	Single Axis Long Stick Center Locking
08-5916-07	Single Axis Short Stick Center Lock Friction Det
08-5919-02	Single Axis Handle W/2 Buttons and Switch
80-0059-44	Decal Sheet (see below)



Handles



Sec 7



Bent Short Sticks



RVC Cable Control Components

RVC Valve Bonnet Kits	
Part Number	Description
FA3032-P	Parker/Gresen V20 Kit
FA3034	Rexroth MP18 Kit
FA3411	Parker/Commercial A35 Kit Front Mount
FA3412	Parker/Commercial A35 Kit Rear Mount



VALVE MANUFACTURER	VALVE MANUFACTURER PART NUMBER	WESCON PART NUMBER
Akon	(F.E.)	01-5001-69
Bosch/Rex Roth	30-S2, MP-18 (F.E.) M4-12-IX (F.E.)	01-5000-13 01-5001-75
Brand	34BFT4S (F.E.) 34BHFT4S (R.E.) 34A058730 (R.E.) TSI 12, 212, 312 (F.E.) DC7504LD (F.E.)	01-5000-33 01-5000-99 01-5001-15 01-5001-44 01-5001-66
Commercial Intertech (C.S.)	A-20, PC25, DAV-20 (F.E.) A-20, PC25 (R.E.) VA-35 (R.E.) VA-35 (F.E.) C101 & C102 Pump (F.E.) G101 & G102 Pump (F.E.) G103 & G104 Pump (F.E.) 505, 506, 507, YM31, 32, 33 (F.E.) V40 Spring Return (R.E.)	01-5000-10 01-5000-11 01-5000-29 01-5000-36 01-5000-71 01-5001-14 01-5000-41 01-5000-86 01-5001-21
Cross	BA, BC, CA, DC, SS (F.E.)	01-5000-28
Danfoss	PVG32 (R.E.)	01-5001-18
Energy	CVSD, CVP, CVA-200 (F.E.)	01-5000-12
Gresen	25R, CP, CS, V20, V42 (F.E.) V10 (F.E.) V11 (F.E.) V12 (F.E.) V15 (F.E.) V20 (F.E.) V20 Spring Return (R.E.) V30 (F.E.) V40 (R.E.) V300 (F.E.)	01-5000-12 01-5000-86 01-5000-69 01-5000-25 01-5000-34 01-5000-66 01-5001-39 01-5000-20 01-5001-21 01-5001-31

VALVE MANUFACTURER	VALVE MANUFACTURER PART NUMBER	WESCON PART NUMBER
Husko	5000 (F.E.) 6000 (F.E.)	01-5000-78 01-5000-20
Kontak	KA-18 (F.E.) KA-18 (F.E.)	01-5000-31* 01-5000-43
Munson/Tyson	HV-07 (F.E.)	01-5000-39
Parker	VDPI1, VDPI2 (F.E.)	01-5000-25
Permco	DMD25, DM640 (F.E.) DMD-200, 300, 400 (F.E.)	01-5000-88 01-5001-46
Prince	RD4100 (F.E.) SV Series (F.E.) SV Series (R.E.) LVR, LVT, LVS (F.E.)	01-5000-46 01-5000-82 01-5000-85 01-5001-35
Racine	3/8 (F.E.) 1/2 (F.E.)	01-5000-20 01-5000-25
Salami	VDM06 (F.E.)	01-5001-71
Tyrone	DP16 (F.E.) TI01/TI02 (F.E.)	01-5000-47 01-5000-88
Walvoil	DLSM8 (F.E.)	01-5000-73
Williams	Dump Pump	01-5000-42

* Fits Kontak Cable Only
(F.E.) - Front Entry
(R.E.) - Rear Entry



Sec 7

Note: Not all kits stocked, list provided as reference

The FA295 operates both PTO and hoist in a single air control. Easy to read nomenclature and simplistic control handle make the FA295 user friendly. Durable construction offers long life and minimizes vehicle downtime.



Specifications

- Lowering Feathered
- Raise Not feathered
- Detent Center only
- Fittings Push to connect included
- PTO Kick-out In lower position
- PTO Light 12 VDC
- Mounting hardware Included with tower

Sec 7

Features

- **Mechanical hoist interlock**
The hoist interlock avoids inadvertent hoist operation, a must for operator safety and meets OSHA hoist control regulations.
- **Automated PTO kick out**
Eliminate additional plumbing of PTO disengagement in lower position.
- **Feathered hoist lower**
Infinite speed control preventing damaged frames, suspensions and jolting.
- **Single air inlet**
Simplifies plumbing and reduces external fittings.
- **High strength and light weight construction**
Driver comfort combined with the durability of single piece cast construction.
- **Extremely compact**
Small size fits well in today's compact trucks.
- **Pre-engineered steel control tower**
Save time and money with InControl towers designed for multiple installation types.
- **PTO red indicator light**
Status indicator provides direct feedback for safe operation.

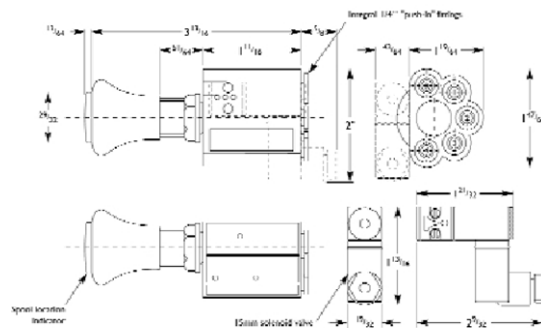
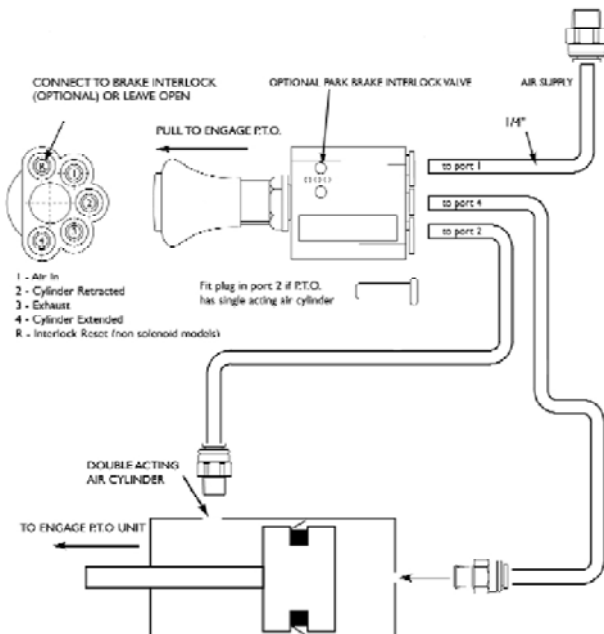


Ideal For Mobile Equipment Applications

2-position ACV valves can be used for four-way directional control or as a three-way pilot valve. Its function indicator has been designed directly into the control knob and is visible only when the valve is in the energized or open position. In the unoperated (closed) position the indicator ring is concealed within the knob assembly.

ACV features an optional interlock reset port which can be used to automatically return the valve to the closed position. Designed for mobile equipment operations to avoid stall conditions, the interlock feature is used to ensure that the PTO cannot be operated while the vehicle is in motion.

Model	Ports	Knob Color	Solenoid
ACV-R25	¼" Push-In Fittings (5)	Red	-
ACV-B25	¼" Push-In Fittings (5)	Black	-
ACV-R25A	¼" Push-In Fittings (5)	Red	1.5W, 12VDC
ACV-B25A	¼" Push-In Fittings (5)	Black	1.5W, 12VDC



Sec 7

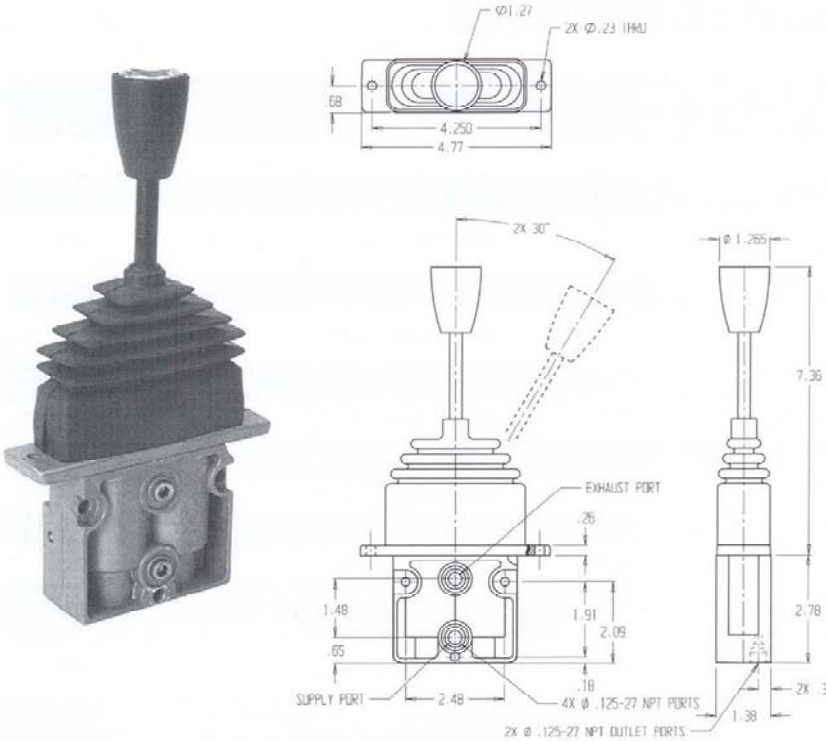
General Specifications

Media:	Air to 145 PSI (10 Bar)
Min. Pressure to Reset Port :	35 PSI
Flow ($\frac{5}{32}$ " models):	0.053 C _v
Flow ($\frac{1}{4}$ " models):	0.12 C _v
Neck Diameter For Panel Mounting :	$\frac{1}{16}$ "
Body:	Plastic
Spool:	Brass
Fittings:	Brass and Plastic
Seals:	PTFE filled Nitrile
Temperature:	-4° to 122°F
Cycle Life:	> 15 Million

InControl

VM Series Stackable Control Valves

These valves control pneumatic actuators on mobile and industrial equipment from a remote location. The VM-series valves can be stacked together using one common inlet and exhaust for multiple applications (banks). With the use of different degree (bent) handles, the stackable feature allows for a cleaner setup while also reducing labor costs. The valves are also available with heavy duty, powder coated consoles that can be customized to fit your unique requirements.



Features include:

- 0-100 proportional control

- Ability to stack valves into multiple banked packages

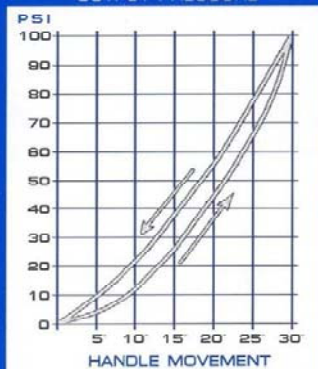
- Various handle bends for installation flexibility



Sec 7

PROPORTIONAL CONTROL GRAPH (0-100 PSI)

DUAL AND QUAD VALVE
OUTPUT PRESSURE



Options:

- Neutral Detent
- 3-Position Detent(Raise, Lower, Neutral)
- Off-center Detent
- Quad Position Joystick
- 13" Console available for up to three bank valves
- Straight, 20 Degree, 35 Degree, 45 Degree, 55 Degree Handles



VM Series Stackable Valves

PART NUMBER	DESCRIPTION
VM-7	VALVE WITH STRAIGHT HANDLE
VM-7-20	VALVE WITH 20 DEGREE HANDLE
VM-7-35	VALVE WITH 35 DEGREE HANDLE
VM-7-45	VALVE WITH 45 DEGREE HANDLE
VM-7-55	VALVE WITH 55 DEGREE HANDLE
VM-8	VALVE WITH NEUTRAL DETENT
VM-9	VALVE WITH 3 POSITION DETENT (RAISE, LOWER, NEUTRAL)
VM-10	QUAD CONTROL VALVE
VM-11	VALVE WITH (1) OFF CENTER DETENT
4289	VM-7 BASE W/OUT HANDLE
4291	STRAIGHT HANDLE
4292	20 DEGREE HANDLE
4305	35 DEGREE HANDLE
4293	45 DEGREE HANDLE
4294	55 DEGREE HANDLE
BVM7-2	BRACKET KIT FOR VM SERIES 2-BANK
BVM7-3	BRACKET KIT FOR VM SERIES 3-BANK
BVM7-4	BRACKET KIT FOR VM SERIES 4-BANK
BVM7-5	BRACKET KIT FOR VM SERIES 5-BANK
4464	SPACER



VM-7



VM-8

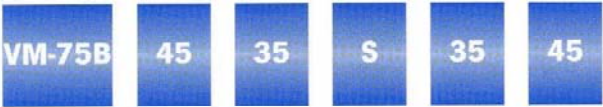


VM-10

Sec 7

Stack Valve Options

For banked units, the beginning prefix will always be VM-7_____ followed by a number signifying the number of banks, and then a letter "B." (ex: for a three bank valve you would have VM-73B_____). For a 5 bank valve your number will read VM-75B_____.) Next you call out your degree handles from left to right. Your options are 55, 45, 35, 20, S (straight). So, if you have a three bank valve it would read: VM-73B35S35. Or for a five bank valve VM-75B4535S3545. (As shown below)





DM Series Hydraulic Valve Air Bonnet Kits

Features Include:

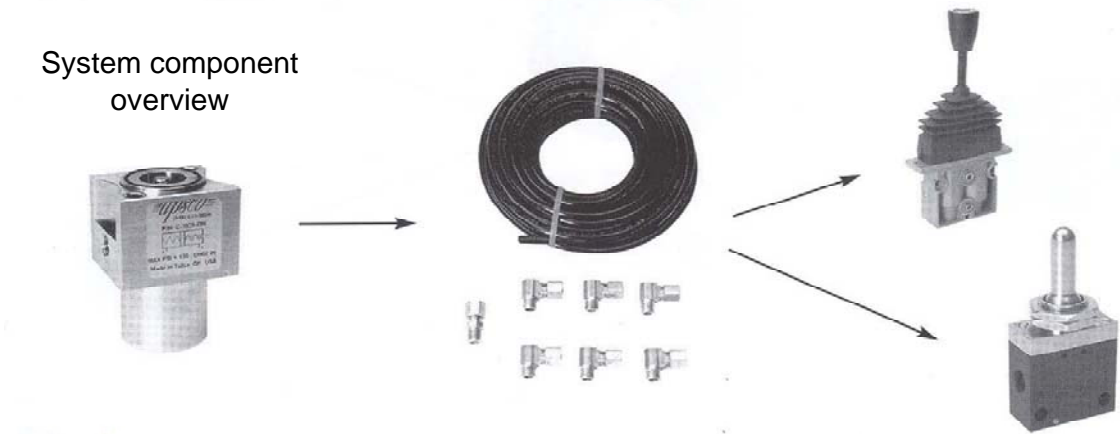
- ▶ Easy Installation Due to Precompressed Spring
- ▶ No Sub Assembly Required
- ▶ No Exposed Moving Parts
- ▶ Non-binding
- ▶ Compact Size



Brand	Valve Model	Valve Kit Non-Meter	Valve Kit Metering
Parker	A20	C-3520-DM	C-3820-DM
"	A35	C-3535-DM	C-3835-DM
"	V42 / 25P	C-3542-DM	-
"	V20	C-3526-DM	C-3826-DM
"	V20-K4 FLOAT	C-3526-DMKF	-
"	V40	C-3540-DM	-
"	C101 / C102	C-3505-DM	C-3805-DM
"	G101	C-3590-DM	-
"	V70 / V90	C-3508-DM	-
"	S75 / S100	HGS-75 (KIT)	-
"	DS75	HG-75 (KIT)	-
BREVINI VPS	DCV80	-	C-3880-DM
PRINCE	5100 MONOBLOCK	C-3551-DM	-

Sec 7

System component overview





WM778 SERIES PRESSURE PROTECTION VALVE

70 PSI HOLDBACK

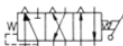
I.S.O. SYMBOL



WM787F THREE POSITION FOUR-WAY REGULATING CONTROLLER

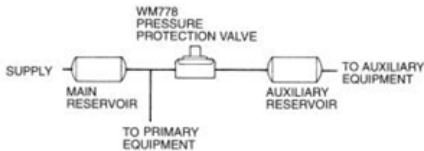
15 SCFM @ 100 PSI
1/8-27 NPTF

I.S.O. SYMBOL



DESCRIPTION

The WM778 series are normally closed pressure protection valves often used when an auxiliary system is supplied off a primary system. The valve will protect primary system air pressure by reclosing automatically at 70 PSI (482 kPa). The WM778 is available with or without a filter installed in its inlet port. The filter will reduce ingestion of contaminants.

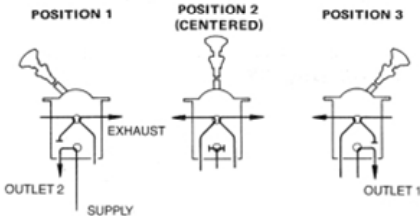


SPECIFICATIONS

PORT SIZE	1/4-18 NPTF
MAXIMUM OPERATING PRESSURE	150 PSI (1034 kPa)
OPERATING TEMPERATURE	-40°F to 180°F (-40°C to 82°C)
MOUNTING	By Inlet and Outlet Ports
MOUNTING ATTITUDE	Optional
MATERIALS: Body	Die Cast Zinc Alloy
Cover	Zinc-Plated Steel
Diaphragm	Fabric-Reinforced Buna N
WEIGHT	9.5 oz. (0.3 kg)

DESCRIPTION

The WM787F dual control valve is a three-position, four-way pressure regulator. It features a control lever equipped with a safety lockout device to prevent unintentional lever movement. The lever locks in the "off" position. To actuate the valve, the operator must pull up on the lockout device and move the lever. The WM787F is a mounting & functional replacement for the WM787D.



SPECIFICATIONS

PORT SIZE	1/8-27 NPTF
MAXIMUM SUPPLY PRESSURE	150 PSI (1034 kPa)
OPERATING TEMPERATURE	-20°F to 160°F (-29°C to 74°C)
FLOW RATING	15 SCFM @ 100 PSI (0.4 m³/min @ 690 kPa)
OUTPUT RANGE	0-90 PSI (0-621 kPa)
MOUNTING	Panel Mounted
MOUNTING ATTITUDE	Optional
MATERIALS: Valve Body	Chromate Treated Aluminum
O-Rings	Buna N
Actuating Lever	Steel and Aluminum Components
Knob	Black Plastic
Mounting Plate	Steel with Black Oxide Finish
WEIGHT	1 lb., 4 oz. (0.6 kg)

InControl

Williams
Air Controls



**THREE-WAY
TWO POSITION
TOGGLE
VALVE**

**WM219
SERIES**

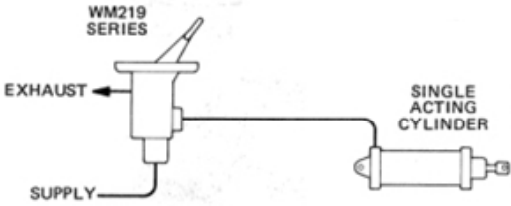
PRODUCT DESCRIPTION

DESCRIPTION The WM219 series consists of two position, three-way toggle valves, which are equipped with new heavy duty metal control levers. Designed for panel mounting, these valves are available with various porting configurations.

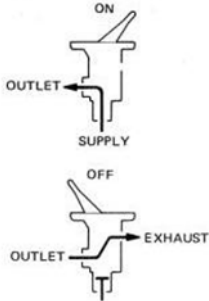
OPERATION The operation of the WM219 valves depends on two internal working parts, the poppet and the stem. The poppet opens and closes the supply port, and the stem opens and closes the exhaust port. When the toggle is flipped to the flow position, the stem moves downward to close the exhaust port. Simultaneously, the poppet unseats and opens the supply port. This allows air to flow through the valve to the outlet port. When the toggle is flipped to the exhaust position, an internal spring returns the stem and opens the exhaust port. The poppet seats to close the supply port.

APPLICATION The WM219 toggle valves are universal application valves that are commonly used to control air pressure-operated relay valves, cylinders, PTO's and fifth wheels.

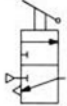
TYPICAL INSTALLATION



FUNCTIONAL DIAGRAM



I.S.O. SYMBOL



**THREE
POSITION
FOUR-WAY
CONTROL
VALVE**

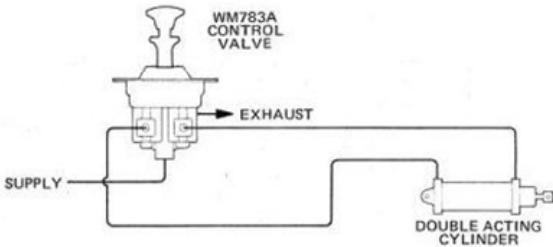
**WM783
SERIES**

PRODUCT DESCRIPTION

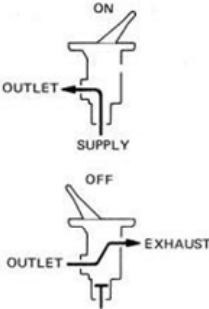
DESCRIPTION The WM783 series is composed of non-compensating four-way control valves with three functional positions. WM783 valves are available with two types of lever operation: WM783A1 models have a detent in each of the valve's lever positions and WM783A models are equipped with a spring-loaded lockout safety device which locks the control lever in each of the three positions to prevent unintentional movement.

OPERATION When the WM783 valve's control lever is in Position 1 (Refer to External Configuration.) outlet port 2 receives supply pressure and outlet 1 is exhausted. Both outlet ports are exhausted in Position 2, which is the neutral or "hold" position, and in Position 3, outlet port 1 receives supply pressure and outlet 2 is exhausted.

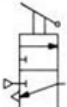
APPLICATION The WM783A is a versatile control valve with a variety of industrial and vehicular applications. WM783A valves are frequently used to control air operated relay valves, cylinders and power take off systems.



FUNCTIONAL DIAGRAM



I.S.O. SYMBOL



Sec 7

InControl

Lift Axle Air Controls



VL-5

Push-Pull 2 position valve 5/2 - 4-way valve function
1/4" NPT ports Cv. =1.5

Side mounted push-pull solenoid valve 12VDC
Console valve 5/2 function 4-way valve function
1/4" NPT ports Cv. =1.5



VL-5-ES



VE-2

4-Way, 2-Position Solenoid Valve, W/ 1/4" Ports,
Durable 12V.D.C. Coil, and can easily be converted
to 3-way

Adjustable pressure regulator, 13 SCFM @100 PSIG,
rated from 0 to 125 PSIG, compact design, 1/4" ports



**1600
Regulator**

Sec 7



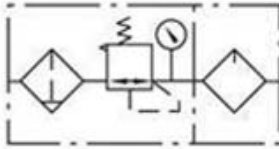
V-44-AP

Air Pilot spring return valve 5/2 function 4-way valve
function 1/4" NPT ports

InControl

Pneumatic –
Filter / Regulator /
Lubricator

Symbol



Specification

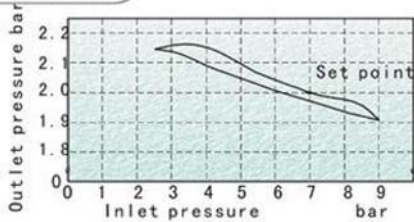


Model		AFC1500	AFC2000	BFC2000	BFC3000	BFC4000
Fluid		Air				
Port size		1/8 "	1/4 "	1/4 "	3/8 "	1/2 "
Filtering grade		40μ				
Pressure range		0.5~8.5bar (0.05~0.85MPa) (7~121Psi)				
Max pressure		9.5bar (0.95MP a) (135Psi)				
Proof pressure		15.0bar (1.5 MPa) (213Psi)				
Temperature		5~60℃				
Drain bowl capacity		15CC		60CC		
Oil bowl capacity		25CC		90CC		
Recommend lubricant		ISO VG 32 or equivalent				
Weight		500g		700g		
Constitute	Filter-Regulator	AFR1500	AFR2000	BFR2000	BFR3000	BFR4000
	Lubricator	AL1500	AL2000	BL2000	BL3000	BL4000

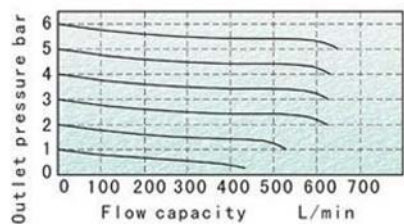
Pressure and flow chart

Sec 7

Pressure chart



Flow chart



Model: AFC2000
1/4" NPT Ports

Compact High Performance Air Conditioning System
Ideal for Mobile Pneumatic Control Systems found on
Trucks



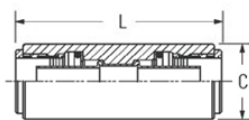
Push to Connect DOT Tubing Air Fittings

Union

(Ref. SAE No. AA0101)



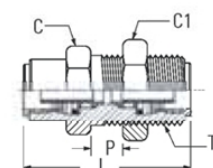
NOTE: Joins tubing



TUBE O.D.	CATALOG NUMBER	DIA C	L
5/32	1862x2.5	0.44	1.41
3/16	1862x3	0.44	1.62
1/4	1862x4	0.53	1.62
3/8	1862x6	0.69	1.94
1/2	1862x8	0.83	1.96
5/8	1862x10	0.96	2.51

Quick Connect Bulkhead Union

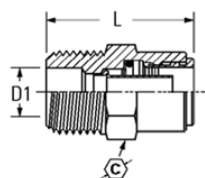
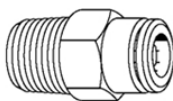
(Ref. SAE No. AA0601)



TUBE O.D.	THREAD T	CATALOG NUMBER	HEX C	HEX C1	L	MAX P
1/4	9/16-24	1874x4x4	5/8	11/16	1.62	0.47
3/8	3/4-16	1874x6x6	7/8	15/16	1.96	0.66
1/2	7/8-14	1874x8x8	1	1	2.00	0.83
5/8	1-14	1874x10x10	1	1-1/4	2.42	1.00

Male Connector

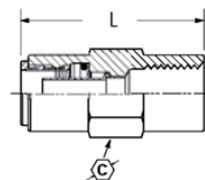
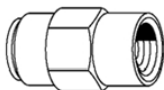
(Ref. SAE No. AA0102)



TUBE O.D.	MALE PIPE THREAD	CATALOG NUMBER	C	D1	L
5/32	1/16	1868x2.5x1	3/8	0.09	0.92
5/32	1/8	1868x2.5	7/16	0.25	0.92
3/16	1/8	1868x3	1/2	0.25	0.92
1/4	1/8	1868x4	9/16	0.19	0.95
1/4	1/4	1868x4x4	9/16	0.34	1.18
1/4	3/8	1868x4x6	11/16	0.41	1.17
3/8	1/8	1868x6x2	11/16	0.19	1.33
3/8	1/4	1868x6	11/16	0.31	1.29
3/8	3/8	1868x6x6	11/16	0.41	1.27
3/8	1/2	1868x6x8	7/8	0.53	1.47
1/2	1/4	1868x8x4	13/16	0.31	1.46
1/2	3/8	1868x8	13/16	0.41	1.35
1/2	1/2	1868x8x8	7/8	0.53	1.50
5/8	3/8	1868x10x6	1	0.41	1.72
5/8	1/2	1868x10	1	0.53	1.71
3/4	1/2	1868x12	1-1/16	0.53	1.72

Female Connector

(Ref. SAE No. AA0103)



TUBE O.D.	FEMALE PIPE THREAD	CATALOG NUMBER	C	L
1/4	1/8	1866x4	9/16	1.33
1/4	1/4	1866x4x4	11/16	1.58
3/8	1/8	1866x6x2	11/16	1.45
3/8	1/4	1866x6	11/16	1.69
3/8	3/8	1866x6x6	13/16	1.75
1/2	1/4	1866x8x4	13/16	1.66
1/2	3/8	1866x8	13/16	1.73
1/2	1/2	1866x8x8	1	1.97

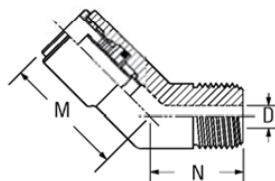
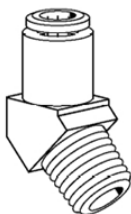
Sec 7



Push to Connect DOT Tubing Air Fittings

45° Male Elbow

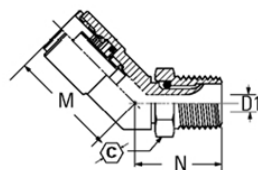
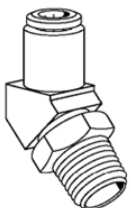
(Ref. SAE No. AA0302)



TUBE O.D.	MALE PIPE THREAD	CATALOG NUMBER	D1	M	N
1/4	1/8	1880x4	0.19	0.95	0.59
1/4	1/4	1880x4x4	0.31	0.95	0.59
3/8	1/8	1880x6x2	0.25	1.05	0.48
3/8	1/4	1880x6	0.31	1.05	0.69
3/8	3/8	1880x6x6	0.41	1.10	0.63
3/8	1/2	1880x6x8	0.53	1.20	0.70
1/2	1/4	1880x8x4	0.31	1.20	0.87
1/2	3/8	1880x8	0.41	1.10	0.73
1/2	1/2	1880x8x8	0.53	1.10	0.76
5/8	3/8	1880x10x6	0.41	1.25	0.82
5/8	1/2	1880x10	0.53	1.39	0.90
3/4	1/2	1880x12	0.53	1.26	0.98

45° Elbow - Swivel Male

(Ref. SAE No. AA03DD)

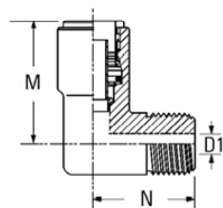
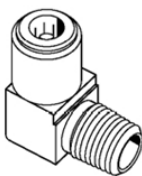


TUBE O.D.	MALE PIPE THREAD	CATALOG NUMBER	D1	M	N	C
1/4	1/8	1880x4S	0.13	0.82	0.60	7/16
1/4	1/4	1880x4x4S	0.22	0.98	0.60	9/16
3/8	1/8	1880x6x2S	0.13	1.20	0.68	7/16
3/8	1/4	1880x6S	0.22	1.20	0.89	9/16
3/8	3/8	1880x6x6S	0.30	1.20	0.97	11/16
1/2	1/4	1880x8x4S	0.22	1.20	1.20	9/16
1/2	3/8	1880x8S	0.30	1.04	1.07	11/16
1/2	1/2	1880x8x8S	0.42	1.08	1.22	7/8

Swivel for installation purposes only.

90° Male Elbow

(Ref. SAE No. AA0302)



TUBE O.D.	MALE PIPE THREAD	CATALOG NUMBER	D1	M	N
5/32	1/16	1869x2.5x1	0.13	0.75	0.59
5/32	1/8	1869x2.5	0.19	0.75	0.59
3/16	1/8	1869x3	0.19	0.84	0.69
1/4	1/8	1869x4	0.19	0.92	0.68
1/4	1/4	1869x4x4	0.31	0.92	0.81
1/4	3/8	1869x4x6	0.41	1.03	0.82
3/8	1/8	1869x6x2	0.19	1.08	0.80
3/8	1/4	1869x6	0.31	1.13	0.96
3/8	3/8	1869x6x6	0.41	1.06	0.98
3/8	1/2	1869x6x8	0.53	1.27	1.07
1/2	1/4	1869x8x4	0.31	1.23	1.00
1/2	3/8	1869x8	0.41	1.25	0.98
1/2	1/2	1869x8x8	0.53	1.25	1.11
5/8	3/8	1869x10x6	0.41	1.44	1.09
5/8	1/2	1869x10	0.53	1.48	1.22

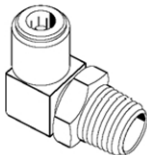
Sec 7



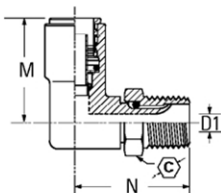
Push to Connect DOT Tubing Air Fittings

90° Swivel Male Elbow

(Ref. SAE No. AA02DD)



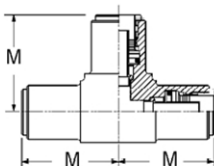
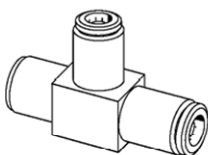
Swivel for installation purposes only.



TUBE O.D.	MALE PIPE THREAD	CATALOG NUMBER	D1	M	N	⌀C
1/4	1/8	1869x4S	0.13	0.89	0.88	7/16
1/4	1/4	1869x4x4S	0.22	0.99	1.06	9/16
1/4	3/8	1869x4x6S	0.30	0.98	1.06	11/16
3/8	1/8	1869x6x2S	0.13	1.03	0.97	7/16
3/8	1/4	1869x6S	0.22	1.10	1.14	9/16
3/8	3/8	1869x6x6S	0.30	1.12	1.15	11/16
3/8	1/2	1869x6x8S	0.42	1.18	1.40	7/8
1/2	1/4	1869x8x4S	0.22	1.08	1.20	9/16
1/2	3/8	1869x8S	0.30	1.13	1.27	11/16
1/2	1/2	1869x8x8S	0.42	1.20	1.47	7/8
5/8	3/8	1869x10x6S	0.42	1.35	1.34	11/16
5/8	1/2	1869x10S	0.42	1.38	1.54	7/8

Union Tee

(Ref. SAE No. AA0401)



TUBE O.D.	CATALOG NUMBER	M
1/4	1864x4	0.93
3/8	1864x6	1.15
1/2	1864x8	1.22

NT100 "Nylon 11"

SAE J844 Type A & B DOT
FMVSS 571.106



Typical Application:

Air brake systems except where temperatures exceed +200°F or where battery acid can drip on tubing.

Construction

Core, Nylon; Braid, Polyamide fiber, (3/8" and larger sizes only); Jacket, Nylon.

Temperature Range:

-40°F to +200°F
(-40°C to +93°C)

Contains: Ultra-Violet Stabilizer in all colors.

Available Colors:

Black (BK), red (RD), blue (BU), brown (BR), silver (SL), green (GN), yellow (YW), orange (OR) and white (WH). Refer to current price list for availability of colors.

Note:

1/8", 5/32", 3/16", 1/4" and 5/16", are SAE J844 Type A (not reinforced);

3/8", 1/2", 5/8" and 3/4" are SAE J844 Type B (reinforced).

Note:

Not all colors available in all sizes. Refer to price pages for availability.

Connectors:

1800 Series
Q-CAB pgs. 76-83

1400 Series
Air Brake pgs. 84-89

For 1/8" Tubing use SelfAlign pgs. 47-52

SelfAlign connectors are not designed to meet DOT standards.

Sec 7

CATALOG NUMBER	TUBE O.D. (IN)	TUBE WALL (IN)	MAX. WORK. PRES. PSI 75°	MIN. BURST PRES. PSI 75°	MIN. BEND RADIUS 70° F	LBS. PER 100 FT.	COIL LENGTH(S) (FT)
NT10002*	1/8 (.125)	.023	150	1,000	.33"	0.4	100,500,1000
NT10025*	5/32 (.156)	.032	150	1,000	.41"	0.4	100,1000
NT10003	3/16 (.187)	.035	150	1,000	.71"	0.6	1000
NT10004	1/4 (.250)	.040	150	1,200	1.19"	1.2	100,500,1000
NT10005	5/16 (.312)	.040	150	1,000	1.25"	1.8	100,500,1000
NT10006	3/8 (.375)	.050	150	1,000	1.5"	2.9	100,500,1000
NT10008	1/2 (.500)	.040	150	1,000	2.0"	3.8	100,500,1000

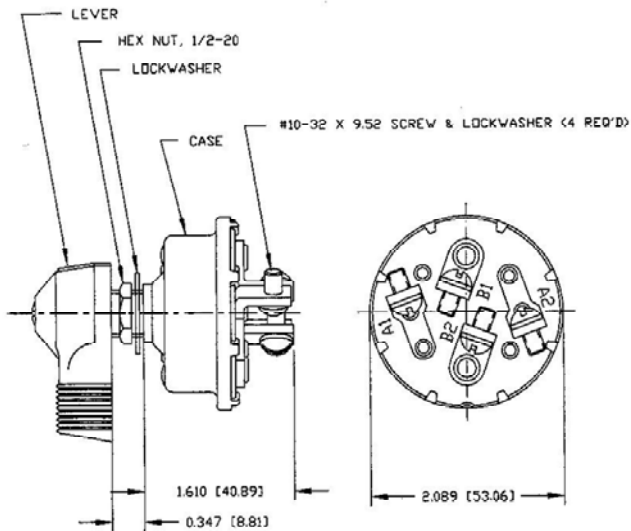


Rotary Tarp Control Switch

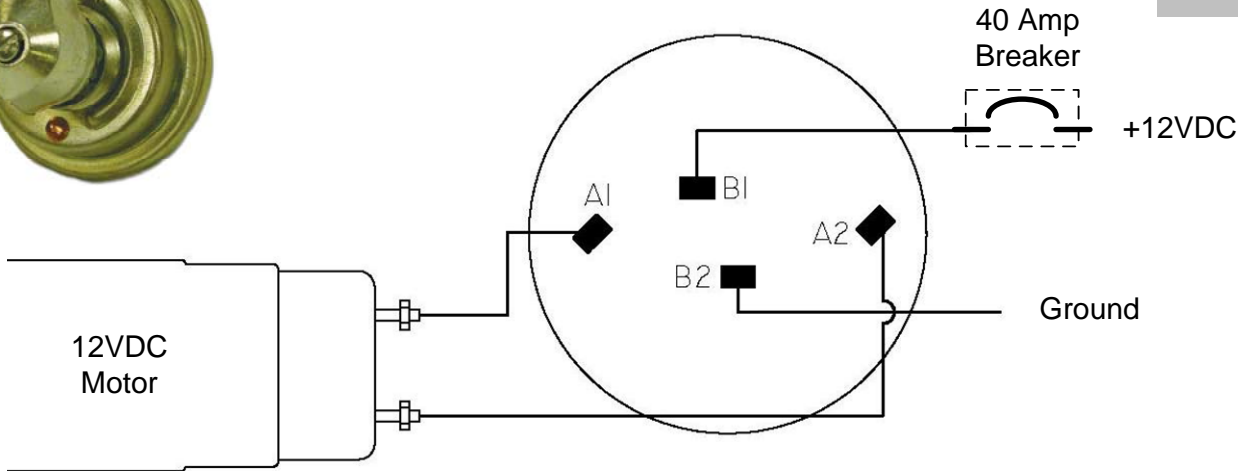


Part Number:
75712-04

Specifications	
Details	DPDT. Silver-laminated contacts.
Positions	Momentary On - Off - Momentary On
Current Rating	50A
Terminals	4 Screw
Contacts	Silver
Mounting Stem	1/2" -20
Actuators	Lever
Actuator Imprint	no imprint
Case	Plated Steel
O-Ring Seal	No
Number of Positions	3
Min Qty	No



Sec 7





Component Parts List

COMMON PARTS		
ICLABEL	INCONTROL TOWER LABEL	
ICSHIM	RVC SHIM	
ICSPACER1	SINGLE RVC SPACER	
ICSPACER2	DOUBLE RVC SPACER	

Sec 8



Component Parts List

3 STICK TOWER PARTS		
IC3BACKPLATE	BACKPLATE FOR IC3FA AND IC3NA	
IC3FA	3 STICK ADJ TOWER ASSEMBLY	WITH FRONT BAY
IC3FABASE	3 STICK ADJUSTABLE BASE	FOR FRONT BAY TOWER
IC3FATOWER	3 STICK ADJUSTABLE TOWER	WITH FRONT BAY
IC3FN	3 STICK NON ADJ TOWER ASSEMBLY	WITH FRONT BAY
IC3FNBASE	3 STICK NON ADJUSTABLE BASE	FOR FRONT BAY TOWER
IC3NA	3 STICK ADJ TOWER ASSEMBLY	
IC3NABASE	3 STICK ADJUSTABLE BASE	
IC3NATOWER	3 STICK ADJUSTABLE TOWER	
IC3NN	3 STICK NON ADJ TOWER ASSEMBLY	
IC3NNBASE	3 STICK NON ADJUSTABLE BASE	
IC3RVCROD	RVC ROD FOR 3 STICK TOWER	
IC3FK-RVC	3 STICK FRONT - RVC KIT	
IC3FK-001	3 STICK FRONT PLATE KIT	SINGLE TAG T/G PANEL LT
IC3FK-002	3 STICK FRONT PLATE KIT	FOR 5 ROCKER SWITCHES
IC3FP	3 STICK FRONT PLATE	BLANK
IC3FP-001	3 STICK FRONT PLATE	SINGLE TAG AND T/G
IC3FP-002	3 STICK FRONT PLATE	FOR 5 ROCKER SWITCHES
IC3TK-RVC	3 STICK TOP PLATE RVC KIT	
IC3TK-001	3 STICK TOP PLATE KIT	PTO HOIST 3/4 HOLE
IC3TK-002	3 STICK TOP PLATE KIT	PTO/HOIST TAILGATE
IC3TK-003	3 STICK TOP PLATE KIT	PTO/HOIST TARP T/G BREAKER
IC3TK-004	3 STICK TOP PLATE KIT	FOR THREE AIR STICKS
IC3TK-005	3 STICK TOP PLATE KIT	FOR TWO AIR STICKS
IC3TK-006	3 STICK TOP PLATE KIT	FOR QDB SPREADER VALVE
IC3TP	3 STICK TOP PLATE	BLANK
IC3TP-001	3 STICK TOP PLATE	RVC STICK PLATE
IC3TP-002	3 STICK TOP PLATE	RVC STICK PLATE - BACKLIT
IC3TP-003	3 STICK TOP PLATE	QDB SPREADER VALVE
IC3TP-004	3 STICK TOP PLATE	FOR THREE AIR STICKS
IC3TP-005	3 STICK TOP PLATE	FOR TWO AIR STICKS

Sec 8



Component Parts List

5 STICK TOWER PARTS		
IC5BACKPLATE	BACKPLATE FOR IC5FA AND IC5NA	
IC5FA	5 STICK ADJ TOWER ASSEMBLY	WITH FRONT BAY
IC5FABASE	5 STICK ADJUSTABLE BASE	FOR FRONT BAY TOWER
IC5FATOWER	5 STICK ADJUSTABLE TOWER	WITH FRONT BAY
IC5FN	5 STICK NON ADJ TOWER ASSEMBLY	WITH FRONT BAY
IC5FNBASE	5 STICK NON ADJUSTABLE BASE	FOR FRONT BAY TOWER
IC5NA	5 STICK ADJ TOWER ASSEMBLY	
IC5NABASE	5 STICK ADJUSTABLE BASE	
IC5NATOWER	5 STICK ADJUSTABLE TOWER	
IC5NN	5 STICK NON ADJ TOWER ASSEMBLY	
IC5NNBASE	5 STICK NON ADJUSTABLE BASE	
IC5RVCROD	RVC ROD FOR 5 STICK TOWER	
IC5FK-RVC	5 STICK FRONT PLATE RVC KIT	
IC5FK-001	5 STICK FRONT PLATE	ELEC PANEL AIR T/G
IC5FK-002	5 STICK FRONT PLATE	FOR 5 ROCKER SWITCHES
IC5FK-003	5 STICK FRONT PLATE	FOR 1100 SPREADER
IC5FK-004	5 STICK FRONT PLATE	2 TAG AXLE WITH LIGHTS
IC5FK-005	5 STICK FRONT PLATE	1 TAG AXLE
IC5FP	5 STICK FRONT PLATE	BLANK
IC5FP-001	5 STICK FRONT PLATE	ELECTRONIC PLATE AIR T/G
IC5FP-002	5 STICK FRONT PLATE	F/A 1100 SPREADER MOUNT
IC5FP-003	5 STICK FRONT PLATE	FOR 5 ROCKER SWITCHES
IC5FP-004	5 STICK FRONT PLATE	TWO TAG AXLES LIGHTS
IC5FP-005	5 STICK FRONT PLATE	SINGLE TAG AXLE LIGHT
IC5TK-RVC	5 STICK TOP PLATE RVC KIT	
IC5TK-001	5 STICK TOP PLATE KIT	N FORCE PTO/HOIST SINGLE TAG
IC5TK-002	5 STICK TOP PLATE KIT	N FORCE PTO/HOIST
IC5TK-003	5 STICK TOP PLATE KIT	N FORCE PTO/HOIST T/G
IC5TK-004	5 STICK TOP PLATE KIT	FA PTO/HOIST AIR TARP T/G
IC5TK-005	5 STICK TOP PLATE KIT	FA PTO/HOIST ELEC TARP T/G
IC5TK-006	5 STICK TOP PLATE KIT	FA PTO/HOIST T/G
IC5TK-007	5 STICK TOP PLATE KIT	FA PTO/HOIST 2 HOLES
IC5TK-008	5 STICK TOP PLATE KIT	5 AIR STICKS
IC5TK-009	5 STICK TOP PLATE KIT	3 AIR STICKS T/G ELEC TARP

Sec 8



Component Parts List

5 STICK TOWER PARTS		
IC5TK-RVC	5 STICK TOP PLATE RVC KIT	
IC5TK-001	5 STICK TOP PLATE KIT	N FORCE PTO/HOIST SINGLE TAG
IC5TK-002	5 STICK TOP PLATE KIT	N FORCE PTO/HOIST
IC5TK-003	5 STICK TOP PLATE KIT	N FORCE PTO/HOIST T/G
IC5TK-004	5 STICK TOP PLATE KIT	FA PTO/HOIST AIR TARP T/G
IC5TK-005	5 STICK TOP PLATE KIT	FA PTO/HOIST ELEC TARP T/G
IC5TK-006	5 STICK TOP PLATE KIT	FA PTO/HOIST T/G
IC5TK-007	5 STICK TOP PLATE KIT	FA PTO/HOIST 2 HOLES
IC5TK-008	5 STICK TOP PLATE KIT	5 AIR STICKS
IC5TK-009	5 STICK TOP PLATE KIT	3 AIR STICKS T/G ELEC TARP
IC5TK-010	5 STICK TOP PLATE KIT	DO NOT USE
IC5TK-011	5 STICK TOP PLATE KIT	ELEC TARP AIR TG FEATHER HOIST
IC5TK-012	5 STICK TOP PLATE KIT	FEATHER HOIST CONTROL
IC5TP	5 STICK TOP PLATE	BLANK
IC5TP-001	5 STICK TOP PLATE	N FORCE PTO/HOIST SINGLE TAG
IC5TP-002	5 STICK TOP PLATE	N FORCE PTO/HOIST
IC5TP-003	5 STICK TOP PLATE	F/A PTO/HOIST
IC5TP-004	5 STICK TOP PLATE	RVC STICKS
IC5TP-005	5 STICK TOP PLATE	RVC STICKS BACKLIT
IC5TP-006	5 STICK TOP PLATE	N FORCE PTO/HOIST AIR T/G
IC5TP-007	5 STICK TOP PLATE	FA PTO/HOIST 2 HOLES
IC5TP-008	5 STICK TOP PLATE	FA PTO/HOIST ELEC TARP T/G
IC5TP-009	5 STICK TOP PLATE	5 AIR STICKS
IC5TP-010	5 STICK TOP PLATE	3 AIR STICKS T/G ELEC TARP
IC5TP-011	5 STICK TOP PLATE	FEATHER HOIST CONTROL
IC5TP-012	5 STICK TOP PLATE	ELEC TARP AIR TG FEATHER HOIST

Sec 8



Component Parts List

7 STICK TOWER PARTS		
IC7BACKPLATE	BACKPLATE FOR IC7FA AND IC7NA	
IC7FA	7 STICK ADJ TOWER W/ FRONT BAY	
IC7FABASE	7 STICK ADJUSTABLE BASE	FOR FRONT BAY TOWER
IC7FATOWER	7 STICK ADJUSTABLE TOWER	WITH FRONT BAY
IC7FN	7 STICK NON ADJ TOWER ASSEMBLY	WITH FRONT BAY
IC7FNBASE	7 STICK NON ADJUSTABLE BASE	FOR FRONT BAY TOWER
IC7NA	7 STICK ADJ TOWER ASSEMBLY	
IC7NABASE	7 STICK ADJUSTABLE BASE	
IC7NATOWER	7 STICK ADJUSTABLE TOWER	
IC7NN	7 STICK NON ADJ TOWER ASSEMBLY	
IC7NNBASE	7 STICK NON ADJUSTABLE BASE	
IC7RVCROD	RVC ROD FOR 7 STICK TOWER	
IC7FK-RVC	7 STICK FRONT PLATE RVC KIT	
IC7FK-001	7 STICK FRONT PLATE	
IC7FK-002	7 STICK FRONT PLATE	3 TAG AXLE
IC7FK-003	7 STICK FRONT PLATE	2 TAG AXLE 5 ROCKER SWITCH
IC7FK-004	7 STICK FRONT PLATE	N FORCE ELEC PANEL T/G
IC7FK-005	7 STICK FRONT PLATE	5 ROCKER SWITCHES
IC7FK-006	7 STICK FRONT PLATE	4 IND. LTS 5 ROCKER SWITCH
IC7FK-007	7 STICK FRONT PLATE	1100 SPREADER CONTROL
IC7FK-008	7 STICK FRONT PLATE	QDL SPREADER CONTROL
IC7FP	7 STICK FRONT PLATE	BLANK
IC7FP-001	7 STICK FRONT PLATE	N FORCE ELEC PANEL T/G
IC7FP-002	7 STICK FRONT PLATE	3 TAG AXLE
IC7FP-003	7 STICK FRONT PLATE	5 ROCKER SWITCHES
IC7FP-004	7 STICK FRONT PLATE	4 IND. LTS 5 ROCKER SWITCH
IC7FP-005	7 STICK FRONT PLATE	1100 SPREADER CONTROL
IC7FP-006	7 STICK FRONT PLATE	QDL SPREADER CONTROL

Sec 8



Component Parts List

7 STICK TOWER PARTS		
IC7TK-RVC	7 STICK TOP PLATE RVC KIT	
IC7TK-001	7 STICK TOP PLATE KIT	N FORCE ELEC PANEL T/G
IC7TK-002	7 STICK TOP PLATE KIT	3 TAG AXLE
IC7TK-003	7 STICK TOP PLATE KIT	FOR RVC WITH 7 IND. LT HOLES
IC7TK-004	7 STICK TOP PLATE KIT	FA PTO/HOIST TWO 3/4 HOLES
IC7TK-005	7 STICK TOP PLATE KIT	FA PTO/HOIST T/G 3/4 HOLE
IC7TK-006	7 STICK TOP PLATE KIT	FA PTO/HOIST AIR T/G TARP
IC7TK-007	7 STICK TOP PLATE KIT	FA PTO/HOIST ELEC TARP T/G
IC7TK-008	7 STICK TOP PLATE KIT	FA PTO/HOIST 1 TAG TARP T/G
IC7TK-009	7 STICK TOP PLATE KIT	7 AIR STICKS
IC7TK-010	7 STICK TOP PLATE KIT	3 AIR STICKS QDL SPREADER
IC7TK-011	7 STICK TOP PLATE KIT	DO NOT USE
IC7TK-012	7 STICK TOP PLATE KIT	3 AIR STICKS
IC7TK-013	7 STICK TOP PLATE KIT	2 DUAL AIR 1 SINGLE AIR
IC7TK-014	7 STICK TOP PLATE KIT	1 DUAL AIR 1 SINGLE AIR
IC7TP	7 STICK TOP PLATE	BLANK
IC7TP-001	7 STICK TOP PLATE	N FORCE ELEC PANEL T/G
IC7TP-002	7 STICK TOP PLATE	FOR RVC CONTROLS
IC7TP-003	7 STICK TOP PLATE	FOR RVC CONTROLS - BACKLIT
IC7TP-004	7 STICK TOP PLATE	2 HOLES MOUNT 5100 SPREADER
IC7TP-005	7 STICK TOP PLATE	DUAL PRE-TECH AIR SINGLE AIR
IC7TP-006	7 STICK TOP PLATE	3 TAG AXLE
IC7TP-007	7 STICK TOP PLATE	FA PTO/HOIST TWO 3/4 HOLES
IC7TP-008	7 STICK TOP PLATE	FOR RVC WITH 7 IND. LT HOLES
IC7TP-009	7 STICK TOP PLATE	FA PTO/HOIST ELEC TARP T/G
IC7TP-010	7 STICK TOP PLATE	FA PTO/HOIST 1 TAG TARP T/G
IC7TP-011	7 STICK TOP PLATE	7 AIR STICKS
IC7TP-012	7 STICK TOP PLATE	3 AIR STICKS QDL SPREADER
IC7TP-013	7 STICK TOP PLATE	DO NOT USE
IC7TP-014	7 STICK TOP PLATE	3 AIR STICKS
IC7TP-015	7 STICK TOP PLATE	2 DUAL AIR 1 SINGLE AIR

Sec 8